



# Solar panels directly pass through the inverter





## Overview

---

While it's technically possible to connect solar panels directly to an inverter, it's not always the safest or most efficient choice. Using a charge controller, proper wiring, and protective components ensures that your system runs smoothly and lasts longer.

While it's technically possible to connect solar panels directly to an inverter, it's not always the safest or most efficient choice. Using a charge controller, proper wiring, and protective components ensures that your system runs smoothly and lasts longer.

It's appealing to just connect solar panels directly to an inverter, and bypass the safer and more expensive charge controller. Solar panels produce a type of electricity called direct current (DC), and most homes and the power grid run on a form known as alternating current (AC). And that's what.

When putting together a solar power system for something like an RV, boat, or a small cabin, you might wonder if you can connect a solar panel directly to a power inverter to keep it simple. While it seems like an easy shortcut, a direct connection isn't a good idea for a stable or safe power.

**Inverter Purpose:** An inverter converts DC electricity generated by solar panels into AC electricity for household use. **Direct Connection:** It is technically possible to connect an inverter directly to a solar panel, but it is not recommended without proper system design. **Voltage Compatibility:**

**Battery to inverter:** Connect the battery to the inverter using thick battery cables, keeping the distance short and checking the inverter manual for any required fuses or circuit breakers. **Disclaimer:** This article only covers the basics of how to connect solar panels to inverter in an off-grid.

Connecting a solar panel to an existing inverter requires careful consideration of the compatibility and specifications of both the solar panel and the inverter. Here is a detailed guide with technical terms: The first step is to ensure compatibility between the solar panel and the inverter. Key.

A typical solar power setup has the solar panels connected to the batteries and



inverter, and together they produce energy. But batteries are not necessary for the system to work. You can connect a solar panel directly to an inverter and run your appliances. Solar panels can be plugged directly.



## Solar panels directly pass through the inverter



### [Can I Connect My Solar Panels Directly to My Inverter?](#)

While it's technically possible to connect solar panels directly to an inverter, it's not always the safest or most efficient choice. Using a charge controller, proper wiring, and ...

[Request Quote](#)

### How to connect solar panels to inverter and battery in 3 steps

This guide explains how to connect solar panels to an inverter safely and effectively. We'll also discuss factors like inverter capacity to help you determine how many ...

[Request Quote](#)



### [Can A Solar Panel Be Connected Directly To An Inverter?](#)

Connecting an inverter directly to a solar panel is theoretically possible, but it may not be practical in most cases. The input tolerances of inverters are generally narrow, which means they can't ...

[Request Quote](#)



### Solar pass through power?

Is there a solar generator that has an inverter (charge controllers?) smart enough to pass power from solar directly to the AC power output through the inverter and bypass the ...

[Request Quote](#)



## 10 Top Picks to Connect Solar Panel Directly to Inverter: Your ...

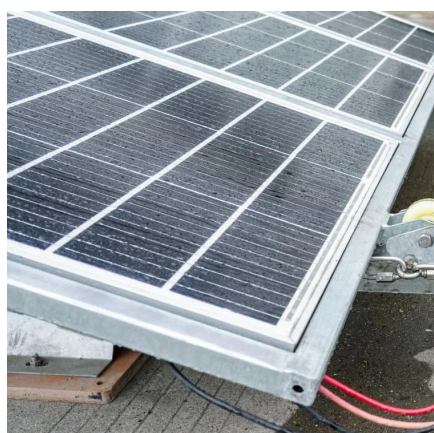
While sometimes a charge controller or battery bank is involved, there are many scenarios where you might want to connect solar panel directly to inverter (or at least with minimal intermediate ...

[Request Quote](#)

## [Can I connect an inverter directly to a solar panel](#)

In this post, we'll explore the compatibility of inverters with solar panels, discuss the types of inverters available, and guide you on ...

[Request Quote](#)



## [How to Connect Solar Panels Directly to an Inverter](#)

Solar panels can be plugged directly into an inverter input. In a grid tied system, the solar panels and inverter do not need a battery because power can be transmitted and sent to the grid.

[Request Quote](#)

## [Connect Solar Panels To An Inverter: A](#)



## [Step-by-Step Guide](#)

Once you've wired your solar panels, you need to connect them to the inverter. You should connect the positive and negative terminals of the solar panels to the corresponding input ...

[Request Quote](#)



## [Solar Panel & Power Inverter: Get Stable Power The Right Way](#)

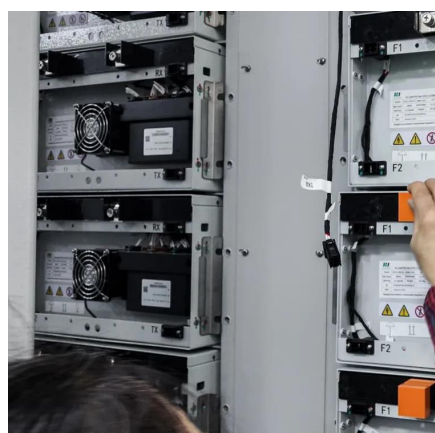
It is not a good idea to connect a solar panel straight to an inverter because the panel's power output is not stable. Voltage changes all the time because of the sun, which can ...

[Request Quote](#)

## [How to connect a solar panel to an existing inverter?](#)

If the inverter is designed for direct solar input (as in hybrid or grid-tie inverters), you can connect the solar panel directly to the inverter, provided the voltage and current ...

[Request Quote](#)



## [Can I connect an inverter directly to a solar panel?](#)

In this post, we'll explore the compatibility of inverters with solar panels, discuss the types of inverters available, and guide you on how to safely set up your solar energy ...

[Request Quote](#)



## Contact Us

---

For catalog requests, pricing, or partnerships, please visit:

<https://www.energyinnovationday.pl>

Phone: +48 22 335 1273

Email: [info@energyinnovationday.pl](mailto:info@energyinnovationday.pl)

Scan the QR code to contact us via WhatsApp.

