



# Solar panel installation capacity and inverter ratio





## Overview

---

It is best when the total capacity of your solar panels (DC size) is slightly bigger than the peak capacity of your inverters (AC size). To set up an efficient solar system, we recommend a DC-to-AC ratio of 1.25:1, or as close as possible to that ratio.

It is best when the total capacity of your solar panels (DC size) is slightly bigger than the peak capacity of your inverters (AC size). To set up an efficient solar system, we recommend a DC-to-AC ratio of 1.25:1, or as close as possible to that ratio.

Achieving the correct balance between these two components, often referred to as the DC/AC ratio, directly impacts your system's efficiency, output, and overall value. Understanding this ratio helps you maximize your solar investment and ensure a stable, reliable energy supply. The DC/AC ratio.

In this guide, we'll walk you through exactly how to calculate the correct solar inverter size, what factors influence the decision, and how to avoid costly mistakes like inverter clipping or poor efficiency. Let's get started. What Does a Solar Inverter Do?

If you're venturing into the world of.

The size of your solar inverter should be similar to the DC rating of your system. An array-to-inverter ratio will tell you how closely you need to match the DC output. The average solar inverter has a 1.15 to 1.25 array-to-inverter ratio. Oversized inverters lose efficiency and undersized.

The DC/AC ratio is the size relationship between the total DC power of your solar panels and the AC power rating of your inverter. In other words, it shows how much solar panel capacity is installed compared to the inverter capacity.  $12 \text{ kW (DC)} \div 10 \text{ kW (AC)} = 1.2 \text{ DC/AC ratio}$  This ratio helps.

The DC-to-AC ratio (also called the inverter loading ratio) compares your solar array's capacity to your inverter's AC output rating. A ratio of 1.2 means your panels can theoretically produce 20% more power than your inverter can output. Why intentionally "undersize" your inverter?



Solar panels.

Choosing the right solar inverter size is critical—and one of the most common questions: what solar inverter size do I need?

Whether you are installing a rooftop system in California, powering a remote cabin in Alberta, or sizing for a community center in Rajasthan, getting it right means.



## Solar panel installation capacity and inverter ratio



### [Solar Inverter Sizing Guide for Maximum Efficiency ...](#)

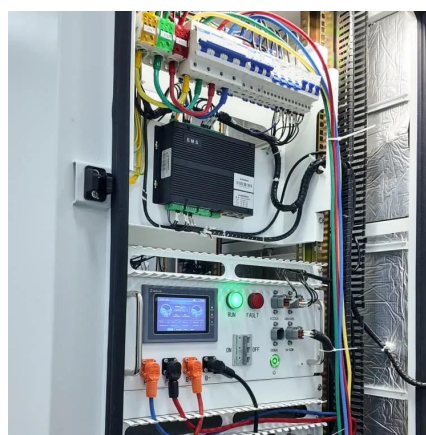
In most cases, the inverter size should be close to the size of your solar panel system, within a 33% ratio. For example, a 6.6kW solar ...

[Request Quote](#)

### [DC/AC Ratio Guide for Solar Systems: Best ...](#)

The DC/AC ratio is the size relationship between the total DC power of your solar panels and the AC power rating of your inverter. In other words, it ...

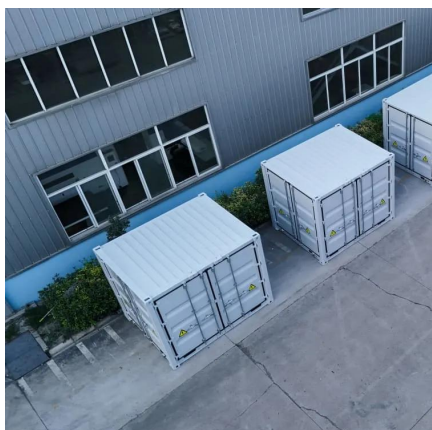
[Request Quote](#)



### **How to Choose the Right Size Solar Inverter: Step-by-Step with ...**

This guide walks you through calculating inverter size based on panel capacity, power usage, and safety margins. We use real examples from installations in Texas and ...

[Request Quote](#)



### **Solar Panel Inverter Size Calculator: Know What You Need , Angi**

Solar panels don't always perform at peak efficiency and your inverter will consume a small percentage of the DC electricity it needs to convert. Homeowners can size slightly ...



[Request Quote](#)



### [How to Choose the Right Size Solar Inverter: Step ...](#)

This guide walks you through calculating inverter size based on panel capacity, power usage, and safety margins. We use real ...

[Request Quote](#)



### [Inverter Size Calculator - self2solar](#)

Determining the correct inverter size depends on your solar array's capacity and your household's power needs. Generally, the ...

[Request Quote](#)



### [Everything You Need to Know About Inverter Sizing](#)

In this article, we'll go into the basics of what an inverter is, the types of inverters, inverter power outputs, and how the DC-to-AC size ratio is vital in making a solar system run ...

[Request Quote](#)



### [Inverter & Array Sizing: Getting the DC/AC](#)



## [Ratio ...](#)

In simple terms, it tells you how much solar panel power you are connecting relative to your inverter's capacity. Solar panels produce ...

[Request Quote](#)



## **DC/AC Ratio Guide for Solar Systems: Best Inverter Sizing Tips**

The DC/AC ratio is the size relationship between the total DC power of your solar panels and the AC power rating of your inverter. In other words, it shows how much solar panel capacity is ...

[Request Quote](#)

## [Solar Panel Inverter Size Calculator: Know What ...](#)

Solar panels don't always perform at peak efficiency and ...

[Request Quote](#)



## [Solar PV Inverter Sizing , Complete Guide](#)

The DC-to-AC ratio, also known as the Array-to-Inverter Ratio, is the ratio of the installed DC capacity (solar panel wattage) to the ...

[Request Quote](#)

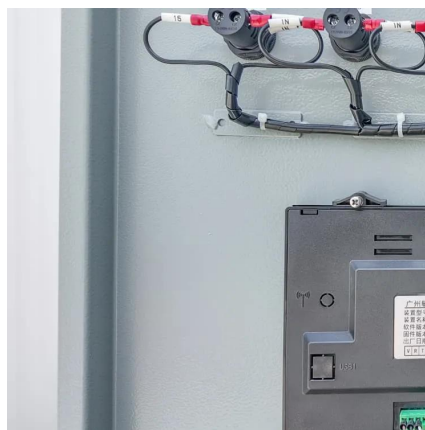
## [Inverter & Array Sizing: Getting the DC/AC](#)



## [Ratio Right](#)

In simple terms, it tells you how much solar panel power you are connecting relative to your inverter's capacity. Solar panels produce direct current (DC) electricity, which the ...

[Request Quote](#)



## **How to Determine the Right Solar Inverter Size for Your System**

Inverter size also plays a key role in the DC-to-AC ratio--a critical design metric in any solar system. This ratio compares the total power rating of your solar panels (in DC) to the ...

[Request Quote](#)

## [Inverter Size Calculator - self2solar](#)

Determining the correct inverter size depends on your solar array's capacity and your household's power needs. Generally, the inverter should be sized to match about ...

[Request Quote](#)



## [Solar Inverter Sizing Guide for Maximum Efficiency , Mingch](#)

In most cases, the inverter size should be close to the size of your solar panel system, within a 33% ratio. For example, a 6.6kW solar array often pairs with a 5kW inverter to ...

[Request Quote](#)

## [Everything You Need to Know About](#)



## [Inverter ...](#)

In this article, we'll go into the basics of what an inverter is, the types of inverters, inverter power outputs, and how the DC-to-AC size ...

[Request Quote](#)



## [Solar PV Inverter Sizing , Complete Guide](#)

The DC-to-AC ratio, also known as the Array-to-Inverter Ratio, is the ratio of the installed DC capacity (solar panel wattage) to the inverter's AC output capacity.

[Request Quote](#)

## [Solar Inverter Sizing Guide: How to Size Your Inverter](#)

The DC-to-AC ratio (also called the inverter loading ratio) compares your solar array's capacity to your inverter's AC output rating. A ratio of 1.2 means your panels can ...

[Request Quote](#)



## [Solar Inverter Sizing Guide: How to Size Your Inverter](#)

The DC-to-AC ratio (also called the inverter loading ratio) compares your solar array's capacity to your inverter's AC output rating. A ...

[Request Quote](#)



## Contact Us

---

For catalog requests, pricing, or partnerships, please visit:

<https://www.energyinnovationday.pl>

Phone: +48 22 335 1273

Email: [info@energyinnovationday.pl](mailto:info@energyinnovationday.pl)

Scan the QR code to contact us via WhatsApp.

