



Solar panel equivalent configuration





Overview

Use our solar panel series and parallel calculator to easily find which common wiring configuration maximizes the power output of your solar panels. 1. Find the technical specifications label on the back of your solar panel.

Use our solar panel series and parallel calculator to easily find which common wiring configuration maximizes the power output of your solar panels. 1. Find the technical specifications label on the back of your solar panel.

The two primary configurations are series and parallel connections, each with unique characteristics and applications. Whether you're a homeowner looking to maximize energy production or a solar enthusiast exploring advanced setups, this guide will help you understand these configurations in.

Whether you're planning an RV solar setup, designing an off-grid cabin system, or expanding your residential solar array, the wiring configuration you choose will significantly impact your system's voltage, current, efficiency, and overall performance. This comprehensive guide will walk you through.

Choosing the right configuration for your solar panel system is crucial to ensure optimal performance and efficiency. When it comes to wiring and connecting multiple solar panels together, there are two main configurations: series and parallel connections. Understanding the differences between.

Carefully studying how to wire a solar panel will help you achieve the desired result, such as determining the future configuration of solar panels and creating the most energy-efficient system for specific purposes. Looking to compare features and prices for solar panels wired in series vs.

How to wire solar panels?

There are several options. In this article, we'll talk about how to connect solar panels together, look at three wiring methods and explain which one is the best for you. Series connections are ideal for larger home solar systems (4kW+) and long distances to the inverter.

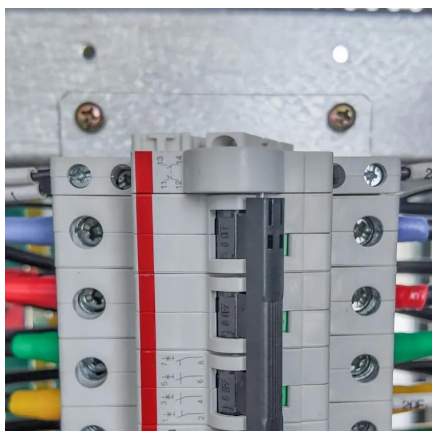
An effective solar panel wiring is highly essential for maximum energy output, solar



power system stability and preventing power loss. There are mainly three different wiring configurations, which are series, parallel, and hybrid connections. This solar panel wiring guide explains different methods.



Solar panel equivalent configuration



[The Ultimate Guide to Solar Panel Configurations: Series vs.](#)

Choosing the right configuration for your solar panel system is crucial to ensure optimal performance and efficiency. When it comes to wiring and connecting multiple solar panels ...

[Request Quote](#)

[Solar Panel Series & Parallel Calculator](#)

Use our solar panel series and parallel calculator to easily find which common wiring configuration maximizes the power output of your solar panels. Solar Panel Series & ...

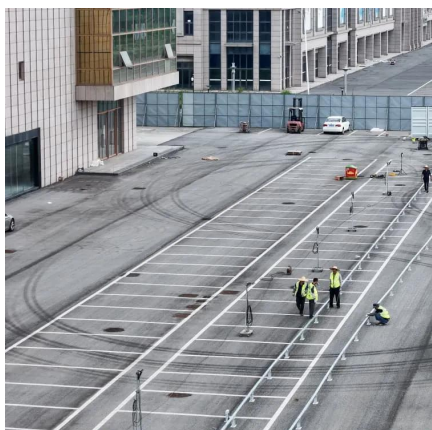
[Request Quote](#)



Understanding Solar Panels in Parallel and Series Connections

In today's world of clean energy, knowing how solar panels are wired--either in parallel or series--is critical for anyone looking to build or optimize a solar power system.

[Request Quote](#)



[Your Guide to Series vs. Parallel Solar Panels](#)

Here's a simple rule to remember:you can connect solar panels with the same operating current in series, but panels with the same operating voltage must be connected in ...



[Request Quote](#)



[Series Vs Parallel Solar Panels: Wiring Guide & MPPT Tips](#)

Series vs parallel solar panels explained with wiring diagrams, MPPT/PWM, shading performance, and inverter tips. Compare setups and choose the right ...

[Request Quote](#)



[Solar Panel Connection Methods: Series vs Parallel Analysis](#)

In a photovoltaic system, solar panels connected in series present a unique configuration. Multiple panels are connected end to end, with the positive terminal of one panel ...

[Request Quote](#)



[Series Vs Parallel Solar Panels: Wiring Guide](#)

Series vs parallel solar panels explained with wiring diagrams, MPPT/PWM, shading performance, and inverter tips. Compare setups ...

[Request Quote](#)



[The Complete Guide to Solar Panel ...](#)



Solar panel configurations play a vital role in determining the efficiency and performance of solar power systems. Whether you choose ...

[Request Quote](#)



Breaking Down the Different Types of Solar Panel Configuration

Explore the various types of solar panel configurations and find the best fit for your energy needs. Learn about the benefits and drawbacks of each setup.

[Request Quote](#)



Solar Panel Wiring Guide: How to Connect Panels for Maximum ...

There are mainly three different wiring configurations, which are series, parallel, and hybrid connections. This solar panel wiring guide explains different methods and includes ...

[Request Quote](#)



[The Complete Guide to Solar Panel Configurations: Series vs.](#)

Solar panel configurations play a vital role in determining the efficiency and performance of solar power systems. Whether you choose a series, parallel, or hybrid setup, ...

[Request Quote](#)



How to connect solar panels



together: Series, parallel, combo

Wondering how to connect solar panels together or even how to connect multiple solar panels together? In this guide, we'll explore three common wiring methods--series, ...

[Request Quote](#)





Contact Us

For catalog requests, pricing, or partnerships, please visit:

<https://www.energyinnovationday.pl>

Phone: +48 22 335 1273

Email: info@energyinnovationday.pl

Scan the QR code to contact us via WhatsApp.

