



Solar panel 220v wattage





Overview

On average, a solar panel produces around 150 to 200 watts per square meter. This can vary due to: Example: A 1.7 m² panel with 20% efficiency will produce about 340W in full sun. Note: Monocrystalline panels lead in efficiency, making them ideal for rooftops with limited space.

On average, a solar panel produces around 150 to 200 watts per square meter. This can vary due to: Example: A 1.7 m² panel with 20% efficiency will produce about 340W in full sun. Note: Monocrystalline panels lead in efficiency, making them ideal for rooftops with limited space.

A solar panel system can produce 220 volts if it is appropriately designed and configured; 2. The number of solar panels needed varies based on their wattage and the total energy requirement; 3. Factors like location, sunlight exposure, and shading also impact the output; 4. Properly integrating.

Wattage refers to the amount of electrical power a solar panel can produce under standard test conditions (STC), which simulate a bright sunny day with optimal solar irradiance (1,000 W/m²), a cell temperature of 25°C, and clean panels. In simpler terms, a panel's wattage rating tells you its.

While your appliances run on 220 volts, solar panels are rated in watts, not volts. It's like comparing apples to electric oranges! The real question should be: "How much power do I need to maintain 220V operation HOME / How Many Solar Panels Do You Really Need for 220 Volts?"

Let's Do the Math How.

This solar panel wattage calculator allows you to calculate the recommended solar panel wattage according to the energy consumption of your household appliances. If you want to know more about solar panel sizes and wattage calculations, feel free to explore our fun and helpful solar panel.

For example, a 300-watt panel can generate up to 300 watts of power in one hour when exposed to direct sunlight. Understanding Solar Panel Wattage is essential because it directly affects your energy output and system design. A higher wattage means a panel can generate more electricity, reducing.



When considering solar panel sizes and wattage, you'll typically find options ranging from 250 to 400 watts. Opting for higher wattage units can be a game-changer, especially for those with limited roof space. For instance, a 300-watt module can produce approximately 900 kilowatt-hours of.



Solar panel 220v wattage



[Solar Panel Wattage & Output Explained](#)

Most residential solar panels in 2025 are rated between 350W and 480W, while commercial modules can exceed 600W. How do manufacturers determine wattage? They test ...

[Request Quote](#)

[Solar Panel Wattage Explained: How Many Watts Do You Need?](#)

Confused about solar panel wattage? Learn how many watts you need, how solar output works, and how to calculate the right solar setup for your home, RV, or cabin.

[Request Quote](#)



[Solar Panel Wattage Explained: How Many Watts ...](#)

Confused about solar panel wattage? Learn how many watts you need, how solar output works, and how to calculate the right solar ...

[Request Quote](#)

[How Much Energy Does A Solar Panel Produce? , EnergySage](#)

In fact, efficiency matters more than wattage when comparing solar panels--a higher wattage can simply mean that a panel is larger. The panels you choose help determine ...



[Request Quote](#)



Understanding Solar Panel Sizes and Wattage: A Complete Tutorial

Each panel type presents unique advantages and disadvantages, so understanding the differences in solar panel sizes and wattage is essential for selecting the ...

[Request Quote](#)



How many solar panels can produce 220v

The quantity of solar panels required to produce 220 volts depends on the wattage rating of the panels and the cumulative energy ...

[Request Quote](#)



PVWatts Calculator

Estimates the energy production and cost of energy of grid-connected photovoltaic (PV) energy systems throughout the world. It allows homeowners, small building owners, installers and ...

[Request Quote](#)

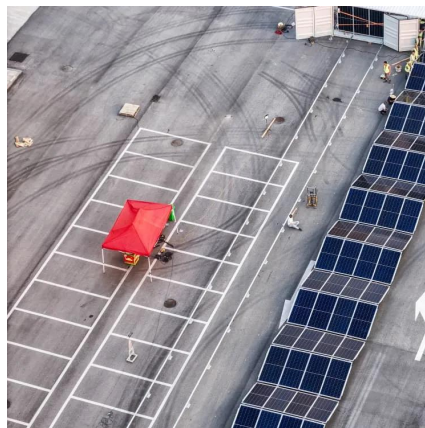
How Many Solar Panels Do You Really



Need for 220 Volts? Let's ...

Hold on - before we start counting panels, let's cut through the confusion. While your appliances run on 220 volts, solar panels are rated in watts, not volts. It's like comparing apples to electric ...

[Request Quote](#)



Solar Panel Wattage Calculator

This solar panel wattage calculator allows you to calculate the recommended solar panel wattage according to the energy consumption of your household appliances. If you want to know more ...

[Request Quote](#)

220-Watt Monocrystalline Silicon Solar Panel with 21.8-Volt ...

With a 220-Watt primary side and a 155-Watt side on the back for ambient light, you can capture up to 25% more solar energy and charge your portable power station even faster.

[Request Quote](#)



[Understanding Solar Panel Wattage Ratings](#)

For residential installations, panels usually range between 300W and 450W. On the commercial side, panels can go beyond 500W. The best solar panel for your needs depends ...

[Request Quote](#)

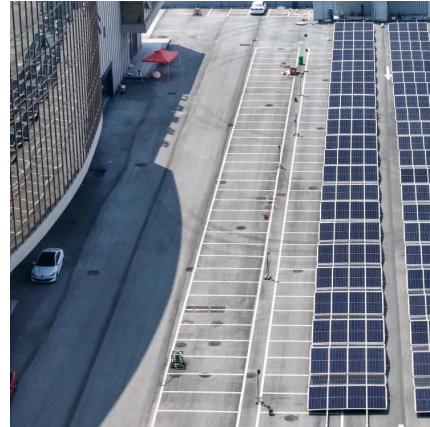
[How many solar panels can produce 220v](#)



[NenPower](#)

The quantity of solar panels required to produce 220 volts depends on the wattage rating of the panels and the cumulative energy demand. For example, using 300-watt panels, ...

[Request Quote](#)





Contact Us

For catalog requests, pricing, or partnerships, please visit:

<https://www.energyinnovationday.pl>

Phone: +48 22 335 1273

Email: info@energyinnovationday.pl

Scan the QR code to contact us via WhatsApp.

