



Solar panel 1010x680 size





Overview

The size is about 5.5 x 3 feet with a thickness of 1.5-2 inches. The energy output varies by manufacturer and model, but it usually ranges from 250 to 400 watts. For instance, your required energy per month is 5-7KWh, considering a 250W panel, you will need at least 20-28 panels to.

The size is about 5.5 x 3 feet with a thickness of 1.5-2 inches. The energy output varies by manufacturer and model, but it usually ranges from 250 to 400 watts. For instance, your required energy per month is 5-7KWh, considering a 250W panel, you will need at least 20-28 panels to.

Solar panel size is measured in watts (W) and indicates how much electricity the panel can produce under standard test conditions. Here's the key distinction every homeowner should understand: Most residential solar panels in 2025 come in three main configurations: The most common choice for.

The size of solar panels varies depending on the number of photovoltaic (PV) cells they include. Each cell adds to the panel's total voltage and power output. The most commonly used cell layouts are 60-cell, 72-cell, and 96-cell panels. Let's consider their main features and purpose: 60-cell solar.

There are 3 standardized sizes of solar panels, namely: 60-cell solar panels size. The dimensions of 60-cell solar panels are as follows: 66 inches long, and 39 inches wide. That's basically a 66x39 solar panel. But what is the wattage?

That is unfortunately not listed at all. 72-cell solar panel.

Most residential solar panels measure between 65 to 75 inches long and 39 to 41 inches wide, delivering power outputs ranging from 250 to 400 watts per panel. Understanding these dimensions is crucial for homeowners planning their solar installation, as panel size directly impacts system.

Solar panel "size" actually refers to two key measurements: These two factors work together to determine your system's efficiency, cost, and performance. The trick is finding the right balance for your specific project type and goals. Physical Size: 51-102 cm long, 41-66 cm wide (typical range).



Typically, a commercial solar panel is 6.5 x 3.2 feet and contains 72 cells. These panels generally weigh more than 50 pounds and have a 6 x 12 grid. Each commercial panel could generate 400W - 600W or more, depending on the type of panel and its efficiency. Another commercial type is a 96-cell. What are the dimensions of standard solar panels?

Most solar panels are about 1.5 inches thick. The typical classification of solar panel sizes is based on the solar cell size, but it's not very useful for most calculations.

How big are residential solar panels?

Today's residential solar panels come in remarkably consistent sizes, making it easier for homeowners to plan their solar installations. A typical residential solar panel measures about 65 inches by 39 inches (roughly 5.4 feet by 3.25 feet), though slight variations exist between manufacturers.

What size solar panel do I Need?

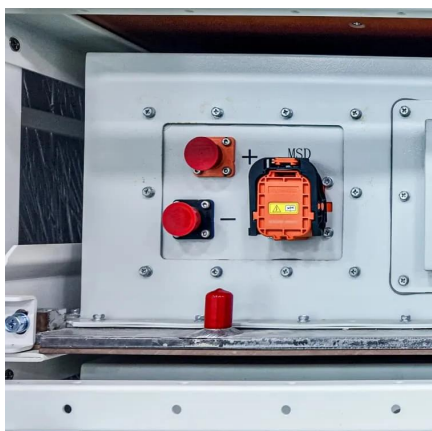
Answer: For residential use, the best solar panel size generally falls around 65 x 39 inches. These dimensions are designed to fit typical roof spaces while providing a good balance of efficiency and energy production. However, the ideal size for your home will depend on your roof space, energy needs, and budget.

What are the dimensions of portable solar panels?

Note: Portable solar panels may have flexible designs with different dimensions.
Physical Size: 165-200 cm long, 99-102 cm wide (typical range) Best Applications:
Note: Dimensions vary by manufacturer. Consult specific product specifications for exact measurements. Physical Size: 200-213 cm long, 99-109 cm wide (typical range) Best Applications:



Solar panel 1010x680 size



[Solar Panel Size Chart: Finding the Right Fit for ...](#)

Using detailed charts and terms like wattage, efficiency, and installation space makes it easy to find the right fit. Let's dive into the ...

[Request Quote](#)

[Solar panel size and weight: everything you need ...](#)

Although exact dimensions vary by manufacturer, home solar panels usually measure about 5.4 feet wide by 3.25 feet long (about 17.6 ...

[Request Quote](#)



[Standard Solar Panel Sizes And Wattages \(100W ...](#)

The goal here is to get to the average solar panel size by wattage. You can find typical dimensions of 100W, 150W, 170W, 200W, 200W, 220W, ...

[Request Quote](#)



[Solar Panel Size & Dimensions Guide 2025 , Complete Specs](#)

In this comprehensive guide, you'll learn everything you need to know about solar panel sizing, from standard dimensions to weight considerations, helping you determine the ...



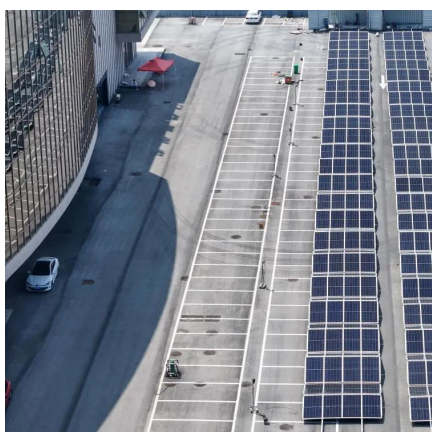
[Request Quote](#)



[Detailed Guide to Solar Panel Size & Dimensions](#)

Knowing solar panel dimensions and power output will help you calculate the right solar system that fits your energy needs and can be supported by your roof. Keep on reading ...

[Request Quote](#)



Solar Panel Sizes: Choosing the Right Dimensions for Any Project

Choosing the right solar panel size can make or break your system's performance. In this guide, we break down how to match your energy needs, roof space, and budget with ...

[Request Quote](#)



[Solar Panel Size Guide , Best Panel Size for Your ...](#)

Learn how to choose the ideal solar panel size for your home. Get expert tips, standard dimensions, and a size chart to simplify your ...

[Request Quote](#)



Solar Panel Size Chart: Finding the



Right Fit for Your Home and

Using detailed charts and terms like wattage, efficiency, and installation space makes it easy to find the right fit. Let's dive into the details to find the correct solar panel size ...

[Request Quote](#)



[Solar Panel Size Chart - SizeChartly](#)

Answer: For residential use, the best solar panel size generally falls around 65 x 39 inches. These dimensions are designed to fit typical roof spaces while providing a good balance of efficiency ...

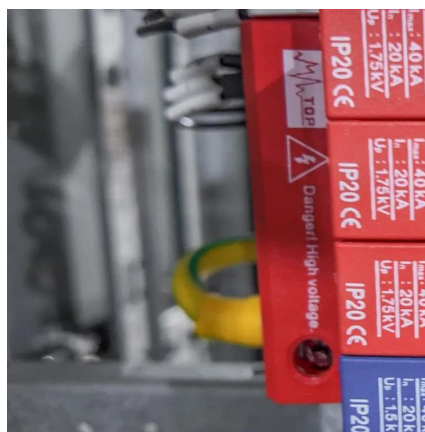
[Request Quote](#)



[Solar Panel Size: 2026 Detailed Guide](#)

It typically contains 60 cells aligned in a 12 x 5 grid. The size is about 5.5 x 3 feet with a thickness of 1.5-2 inches. The energy output varies by manufacturer and model, but it ...

[Request Quote](#)



[Solar Panel Sizes: Choosing the Right Dimensions ...](#)

Choosing the right solar panel size can make or break your system's performance. In this guide, we break down how to match your ...

[Request Quote](#)



[Solar Panel Size Guide , Best Panel Size](#)



[for Your Roof](#)

Learn how to choose the ideal solar panel size for your home. Get expert tips, standard dimensions, and a size chart to simplify your solar decisions.

[Request Quote](#)



[Solar panel size and weight: everything you need to know](#)

Although exact dimensions vary by manufacturer, home solar panels usually measure about 5.4 feet wide by 3.25 feet long (about 17.6 square feet), with a depth of less ...

[Request Quote](#)



[Detailed Guide to Solar Panel Size & Dimensions](#)

Knowing solar panel dimensions and power output will help you calculate the right solar system that fits your energy needs and can ...

[Request Quote](#)



[Standard Solar Panel Sizes And Wattages \(100W-500W ...](#)

The goal here is to get to the average solar panel size by wattage. You can find typical dimensions of 100W, 150W, 170W, 200W, 200W, 220W, 300W, 350W, 400W, and 500W solar ...

[Request Quote](#)



[Perfect Solar Panel Sizes for Your Home](#)



[\(Expert Sizing Guide\)](#)

Today's residential solar panels come in remarkably consistent sizes, making it easier for homeowners to plan their solar installations. A typical residential solar panel ...

[Request Quote](#)





Contact Us

For catalog requests, pricing, or partnerships, please visit:

<https://www.energyinnovationday.pl>

Phone: +48 22 335 1273

Email: info@energyinnovationday.pl

Scan the QR code to contact us via WhatsApp.

