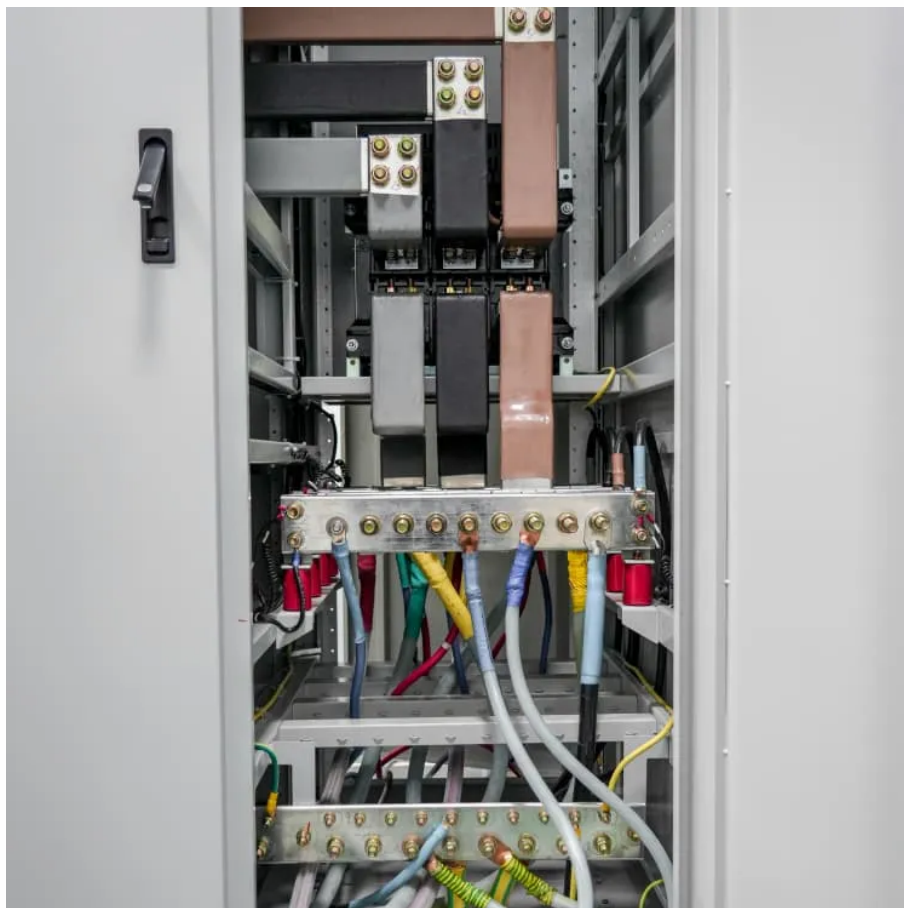




# Solar grid-connected box glass installation





## Overview

---

To connect box-type solar panels, follow these essential steps: 1. Gather necessary materials; 2. Understand the panel specifications; 3. Connect panels in parallel or series; 4. Make electrical connections carefully.

To connect box-type solar panels, follow these essential steps: 1. Gather necessary materials; 2. Understand the panel specifications; 3. Connect panels in parallel or series; 4. Make electrical connections carefully.

This general manual applies to the installation, maintenance and use of the glass - glass solar modules manufactured by VES Solar Enerji San. Tic. A.S.(hereinafter referred to as "VES SOLAR"). Failure to follow these instructions could result in personal injury or property damage. Installation and.

1 Information on this Document 1.1 Validity This document is valid for the device type "GRID-CONNECT-BOX 12.3-20" (Grid-Connect-Box 12). 1.2 Target Group The activities described in this document must be performed by qualified persons only. Qualified persons must have the following skills: • 1.

This guide contains information regarding the installation and safe handling of photovoltaic modules (hereafter is referred to as "module") from SolarSpace Technology Co., Ltd. (hereafter is referred to as "SolarSpace"). During modules installation and routine maintenance, operators should follow.

**Safety Warning:** Grid-tied solar installation involves high-voltage electrical work that can be dangerous and may require licensed electricians. Always check local codes, obtain proper permits, and consult professionals when in doubt. Improper installation can result in electrocution, fire, or code.

Here are design tips for methods of PV system utility interconnection. The purpose of this article is to give you a basic understanding of the concepts and rules for connecting a solar panel system to the utility grid and the household electrical box or meter. The utility connection for a PV solar.

2INSTALLATION GUIDE3 ONYX SOLAR®ONYX SOLAR INDEX This manual offers all the required information about the usage of the photovoltaic architectonic glazing manufactured by Onyx Solar. Instructions must be totally read through and the



steps herein exposed must be followed. The company shall not be.



## Solar grid-connected box glass installation



### [SMA Solar Technology AG GRID-CONNECT-BOX 12 Operating ...](#)

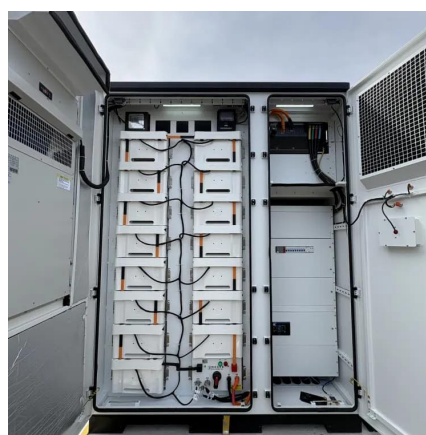
View and Download SMA Solar Technology AG GRID-CONNECT-BOX 12 operating manual online. GRID-CONNECT-BOX 12 inverter pdf manual download.

[Request Quote](#)

## SolarSpace Single Glass Photovoltaic Modules Installation ...

Installers should be familiar with the mechanical and electrical requirements of this system. Please keep this manual safe for future maintenance and maintenance or sale or disposal of ...

[Request Quote](#)



## How To Connect Solar To Grid: Complete Installation Guide (2025)

Learn how to safely connect solar panels to the electrical grid with our comprehensive guide covering permits, installation steps, safety requirements, and code ...

[Request Quote](#)

## UL Dual Glass and Bifacial module

Before installation, make sure that the connector is well protected and there should be no foreign matter such as soil, sand and gravel in the connector. If any, it must be cleaned ...

[Request Quote](#)



### [How to connect a PV solar system to the utility grid](#)

The purpose of this article is to give you a basic understanding of the concepts and rules for connecting a solar panel system to the utility grid and the household electrical box or meter.

[Request Quote](#)



### **SMA GRID CONNECT BOX 12 User Manual**

The Grid Connect Box is an automatic transfer switch which enables the safe operation of the utility grid and a generator as energy sources of an SMA Multicluster System.

[Request Quote](#)



### [How to connect box-type solar panels , NenPower](#)

Connecting box-type solar panels involves a series of meticulous steps that, when executed with precision, ensures that the solar power system functions optimally.

[Request Quote](#)



### [How to connect a PV solar system to the](#)



## [utility grid ...](#)

The purpose of this article is to give you a basic understanding of the concepts and rules for connecting a solar panel system to the utility grid

...

[Request Quote](#)



## [How to connect box-type solar panels , NenPower](#)

Connecting box-type solar panels involves a series of meticulous steps that, when executed with precision, ensures that the ...

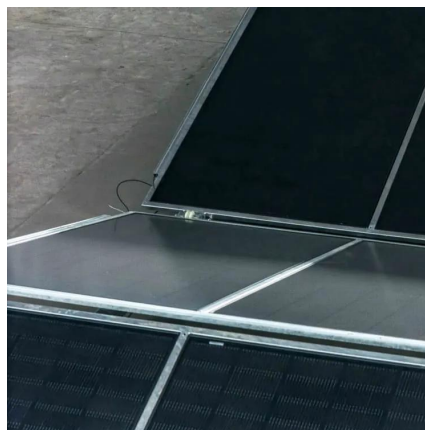
[Request Quote](#)



## [Solar Combiner Box Installation and Wiring Diagram](#)

Learn how to safely install and wire a solar combiner box for DC PV systems. Step-by-step guide covers wiring, grounding, surge protection (SPD), and best practices for ...

[Request Quote](#)



## **INSTALLATION GUIDE**

The basic elements that form this installation are the photovoltaic modules, the solar inverter and the measurement equipment to control the energy balance (net metering) with which you want ...

[Request Quote](#)



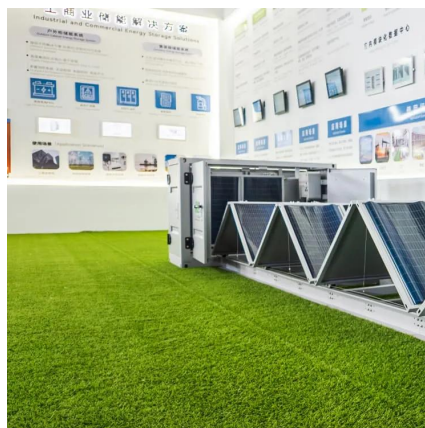
## [Solar Combiner Box Installation and](#)



## [Wiring ...](#)

Learn how to safely install and wire a solar combiner box for DC PV systems. Step-by-step guide covers wiring, grounding, surge ...

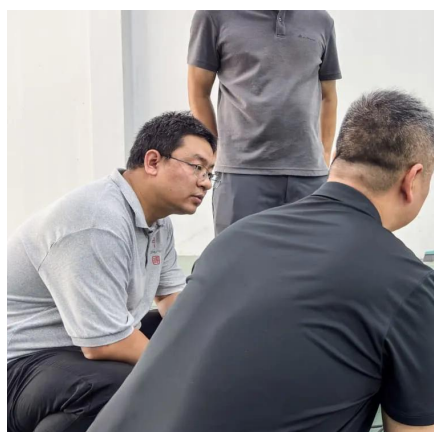
[Request Quote](#)



## [VES SOLAR PV MODULES INSTALLATION MANUAL](#)

This general manual applies to the installation, maintenance and use of the glass - glass solar modules manufactured by VES Solar Enerji San. Tic. A.S.(hereinafter referred to as "VES ...

[Request Quote](#)



## **SMA GRID CONNECT BOX 12 User Manual**

The Grid Connect Box is an automatic transfer switch which enables the safe operation of the utility grid and a generator as energy ...

[Request Quote](#)





## Contact Us

---

For catalog requests, pricing, or partnerships, please visit:

<https://www.energyinnovationday.pl>

Phone: +48 22 335 1273

Email: [info@energyinnovationday.pl](mailto:info@energyinnovationday.pl)

Scan the QR code to contact us via WhatsApp.

