



Solar glass is shatterproof when transported in winter





Overview

The surface of a solar panel is made from tempered glass, which is much stronger than standard glass. It's resistant to cracking and shattering, making it capable of handling the weight of snow and ice.

The surface of a solar panel is made from tempered glass, which is much stronger than standard glass. It's resistant to cracking and shattering, making it capable of handling the weight of snow and ice.

Clear Solar Glass, as the name suggests, is a type of glass that allows light to pass through while also having the ability to convert solar energy into electricity. It combines the transparency of traditional glass with the energy - generating capabilities of solar cells. Our Clear Solar Glass is.

To successfully mount solar glass tubes during the winter season while ensuring optimal energy collection and system longevity, several considerations must be taken into account. 1. Proper weather conditions, 2. Necessary tools and equipment, 3. Understanding thermal behavior, 4. Safety.

PV solar glass is not just a simple covering; it's a key component that shields the solar cells from the harsh elements while allowing maximum sunlight penetration. In this blog, I'll delve into the concept of weather resistance in PV solar glass, exploring the factors that influence it and why.

For example, in regions with cold winters, solar panels made with tempered glass continue to function effectively. The glass is able to endure the cold nights and the subsequent temperature rises during the day. While solar tempered glass is relatively resistant to cold - weather cracking, several.

For solar applications the main attributes of glass are transmission, mechanical strength and specific weight. Transmission factors measure the ratio of energy of the transmitted to the incoming light for a specific glass and glass width. Ratio of the total energy from an AM1-5 source over whole.

The good news is that modern solar panels are designed to handle snow and ice, ensuring reliable performance even in harsh winter conditions. Let's explore how solar panels manage snow and ice and what you can do to maximize their



efficiency and power production during winter. In This Article: Why do solar panels need float glass?

Ultra-bright glass needed with high solar transmission to ensure high efficiencies in the overall pv module. Mechanical strength to withstand snow and wind. Self-cleaning characteristics would help to reduce maintenance costs. Low iron float glass, solar transmission > 90%.

Does tempered glass damage solar panels?

The tempered glass used in solar panels is resistant to the expansion and contraction caused by freezing and thawing. This prevents cracks or other damage that could compromise the panel's integrity. Solar panels are also airtight and waterproof, so ice expansion will not cause damage to solar panels.

Will snow and ice clear from my solar panels?

In most cases, snow and ice will naturally clear from your solar panels without intervention. Attempting to remove snow or ice manually can sometimes do more harm than good, as improper techniques might scratch or crack the tempered glass, as well as possible physical and bodily harm.

Can solar panels handle snow?

Generally speaking, your winter solar panels will do just fine on their own, even during inclement weather. If your solar panels are covered in heavy snow, we advise against trying to remove it yourself, because you may scratch or damage the panels in the process. Most solar panels are efficient enough to handle snow on their own.



Solar glass is shatterproof when transported in winter



[Can Solar Panels Withstand Snow and Ice?](#)

The surface of a solar panel is made from tempered glass, which is much stronger than standard glass. It's resistant to cracking and ...

[Request Quote](#)

[Can Solar Panels Withstand Snow and Ice?](#)

The surface of a solar panel is made from tempered glass, which is much stronger than standard glass. It's resistant to cracking and shattering, making it capable of handling the ...

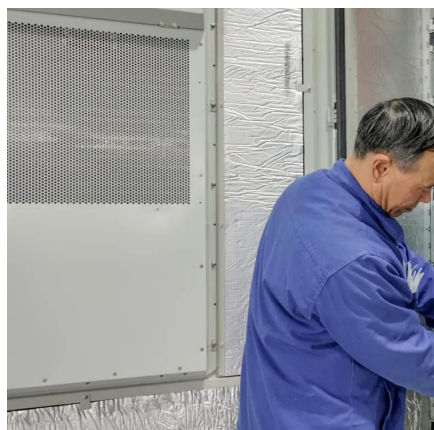
[Request Quote](#)



[How to install solar glass tube in winter . NenPower](#)

Yes, mounting solar glass tubes during winter can be accomplished safely, provided necessary precautions are adhered to. ...

[Request Quote](#)



[How to install solar glass tube in winter . NenPower](#)

Yes, mounting solar glass tubes during winter can be accomplished safely, provided necessary precautions are adhered to. Ensuring an appropriate installation time when weather ...



[Request Quote](#)



[Do Solar Panels Work In The Winter And Cold ...](#)

Wonder whether solar panels work in the snow? Solar panels don't just work under direct sunlight. Learn the science behind them and ...

[Request Quote](#)



[Do Solar Panels Work In The Winter And Cold Weather?](#)

Wonder whether solar panels work in the snow? Solar panels don't just work under direct sunlight. Learn the science behind them and find out how you can optimize their use ...

[Request Quote](#)



WHY CARGO DESICCANT BAGS ARE A SMART CHOICE FOR SOLAR GLASS ...

Using cargo desiccant bags for solar glass shipments provides an effective, affordable, and environmentally friendly solution to preserve the integrity of solar glass during transit.

[Request Quote](#)



[WHY CARGO DESICCANT BAGS ARE A](#)



SMART ...

Using cargo desiccant bags for solar glass shipments provides an effective, affordable, and environmentally friendly solution to preserve the integrity ...

[Request Quote](#)



What is the weather resistance of PV solar glass?

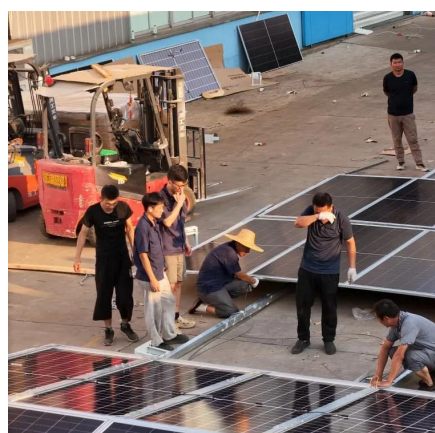
Weather-resistant PV solar glass enhances the safety of solar energy systems. Tempered glass is designed to break into small, dull pieces rather than sharp shards, reducing the risk of injury in ...

[Request Quote](#)

Can extreme cold crack portable solar module glass?

When you're relying on portable solar modules for power during winter adventures or in frigid climates, a common concern is whether extreme cold can damage the glass surface. After all, ...

[Request Quote](#)



Solar Glass & Mirrors, Photovoltaics , Solar Energy

Ultra-bright glass needed with high solar transmission to ensure high efficiencies in the overall pv module. Mechanical strength to withstand snow and wind. Self-cleaning characteristics would ...

[Request Quote](#)

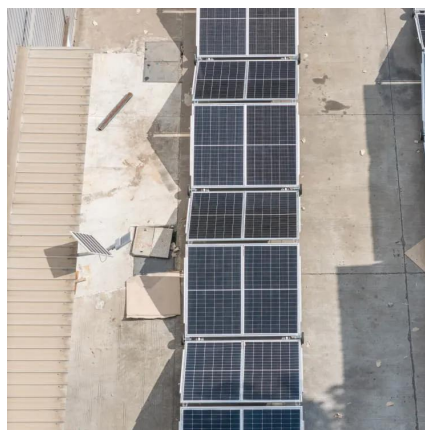
Does solar tempered glass crack easily in



[cold weather?](#)

In conclusion, solar tempered glass does not crack easily in cold weather when it is of high quality and properly installed. The tempering process gives it the strength to withstand ...

[Request Quote](#)



Photovoltaic glass is shatterproof when transported in winter

Photovoltaic glass, also known as "photoelectric glass", is a special glass that presses solar photovoltaic modules, can use solar radiation to generate electricity, and has related current ...

[Request Quote](#)

[Can Clear Solar Glass be used in cold climates?](#)

As a supplier of Clear Solar Glass, I've often been asked whether our product can be effectively used in cold climates. This is a crucial question for many potential customers, ...

[Request Quote](#)





Contact Us

For catalog requests, pricing, or partnerships, please visit:

<https://www.energyinnovationday.pl>

Phone: +48 22 335 1273

Email: info@energyinnovationday.pl

Scan the QR code to contact us via WhatsApp.

