



# Solar container lithium battery packs installed in series





## Overview

---

**Connecting Lithium Solar Batteries in Series:** To connect lithium solar batteries in series, you simply link the negative pole of one battery to the positive pole of the next battery. This ensures that the same current flows through all the batteries.

**Connecting Lithium Solar Batteries in Series:** To connect lithium solar batteries in series, you simply link the negative pole of one battery to the positive pole of the next battery. This ensures that the same current flows through all the batteries.

Lithium solar batteries are essential components of solar energy systems, providing reliable energy storage for various applications. Understanding how to connect these batteries in series or parallel is crucial for optimizing performance and ensuring efficient energy use. This guide explains the.

When you connect battery packs in series, you're essentially lining them up so that the positive terminal of one battery pack is connected to the negative terminal of the next one. This setup increases the overall voltage of the battery system while keeping the capacity (measured in amp - hours).

One of the frequently asked questions is how to connect lithium batteries either in series or parallel. How you wire your batteries directly impacts the solar lithium battery bank wiring in terms of voltage, capacity, and overall performance of the system. These batteries are also wired in series.

Connecting lithium solar batteries effectively can enhance energy storage systems, making them suitable for various applications. Understanding how to connect these batteries in series or parallel is crucial for optimizing voltage and capacity. This guide explores the methods, benefits.

Our ISO 9001-certified manufacturing facilities and IEC 62133-compliant designs ensure that every 18650 battery pack, Li-ion, lithium polymer, and LiFePO4 system delivers unmatched safety, energy density, and cycle life. This definitive guide unpacks the science and strategy behind series.

First off, yes, lithium battery cells can absolutely be connected in series. Connecting battery cells in series means you're linking the positive terminal of one cell to the negative terminal of another. When you do this, the voltages of the



individual cells add up, while the capacity (measured in.



## Solar container lithium battery packs installed in series



### [Can a lithium battery pack be used in series?](#)

In solar energy storage systems, for example, multiple lithium battery packs are often connected in series to store the energy generated by solar panels. The higher voltage ...

[Request Quote](#)

### [Series-Parallel Battery Configurations Guide 2025](#)

For projects requiring rapid deployment, our pre-configured 12V lithium battery packs support plug-and-play parallel expansion. Hybrid configurations combine the voltage ...

[Request Quote](#)



### [Can lithium battery cells be connected in series?](#)

By connecting lithium battery cells in series, you can create a battery pack with the right voltage to store and use the solar energy effectively. Take our 24V 3Ah LFP Solar ...

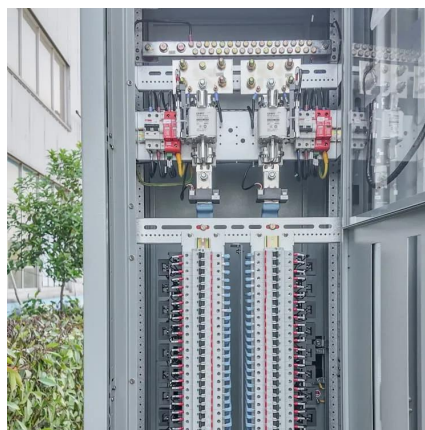
[Request Quote](#)

## Series vs. Parallel: How to Correctly Connect Your LiFePO4 ...

Connecting lithium-ion batteries in parallel or in series is not as straightforward as a simple series-parallel connection of circuits. To ensure the safety of both the batteries and the individual ...



[Request Quote](#)



### Can solar container lithium battery packs of the same type be ...

Connecting Lithium Solar Batteries in Series: To connect lithium solar batteries in series, you simply link the negative pole of one battery to the positive pole of the next battery.

[Request Quote](#)

### [Lithium Solar Batteries Series vs Parallel Connection](#)

Lithium solar batteries are essential components of solar energy systems, providing reliable energy storage for various applications. Understanding how to connect these ...

[Request Quote](#)



### [Can a lithium battery pack be used in series?](#)

In solar energy storage systems, for example, multiple lithium battery packs are often connected in series to store the energy generated ...

[Request Quote](#)



### [Series-Parallel Battery Configurations](#)



## [Guide 2025](#)

For projects requiring rapid deployment, our pre-configured 12V lithium battery packs support plug-and-play parallel expansion. Hybrid ...

[Request Quote](#)



## **How to Connect Multiple Batteries for Solar: A Step-by-Step ...**

Discover how to efficiently connect multiple batteries for your solar power system in this comprehensive guide. Learn the benefits of different battery types, including lead-acid and ...

[Request Quote](#)

## **Series versus Parallel Connections in Solar Lithium Battery bank**

Conclusion Choosing Between Them During the design of your solar lithium battery system, take into consideration energy needs, system voltage, capacity, and safety ...

[Request Quote](#)



## [Can lithium battery cells be connected in series?](#)

By connecting lithium battery cells in series, you can create a battery pack with the right voltage to store and use the solar energy ...

[Request Quote](#)

## **How to Effectively Connect Lithium**



## Solar Batteries in Series and ...

Understanding how to connect these batteries in series or parallel is crucial for optimizing voltage and capacity. This guide explores the methods, benefits, considerations, ...

[Request Quote](#)



## [Batteries in Series vs Parallel: Understand The Differences](#)

Have you ever wondered how large-scale battery banks in solar farms or electric vehicles manage to achieve both high voltage and high capacity? The answer lies in series-parallel combinations.

[Request Quote](#)



## Contact Us

---

For catalog requests, pricing, or partnerships, please visit:

<https://www.energyinnovationday.pl>

Phone: +48 22 335 1273

Email: [info@energyinnovationday.pl](mailto:info@energyinnovationday.pl)

Scan the QR code to contact us via WhatsApp.

