



# Solar base station lead-acid battery construction is divided into





## Overview

---

A lead-acid battery has three main parts: the negative electrode (anode) made of lead, the positive electrode (cathode) made of lead dioxide, and an electrolyte of aqueous sulfuric acid. The electrolyte allows electric charge to move between the anode and cathode during battery use.

A lead-acid battery has three main parts: the negative electrode (anode) made of lead, the positive electrode (cathode) made of lead dioxide, and an electrolyte of aqueous sulfuric acid. The electrolyte allows electric charge to move between the anode and cathode during battery use.

In this chapter the solar photovoltaic system designer can obtain a brief summary of the electrochemical reactions in an operating lead-acid battery, various construction types, operating characteristics, design and operating procedures controlling life of the battery, and maintenance and safety.

In this article, learn the aspects of cell and battery construction, including electrodes, separators, electrolytes, and the difference between stacked plates and cylindrical construction, as well as how cells can be connected in series to form strings or parallel to create battery banks. The.

A lead-acid battery has three main parts: the negative electrode (anode) made of lead, the positive electrode (cathode) made of lead dioxide, and an electrolyte of aqueous sulfuric acid. The electrolyte allows electric charge to move between the anode and cathode during battery use. The.

Lead acid battery is a type of rechargeable battery that works using lead plates and sulphuric acid. When the lead plates are placed in the acid, a chemical reaction takes place, which produces electricity. This process can be reversed to recharge the battery. When several battery cells are joined.

The international Energy Agency (IEA) founded in November 1974, is an autonomous body within the framework of the Organisation for Economic Co-operation and Development (OECD) which carries out a comprehensive programme of energy co-operation among its 23 member countries. The European Commission.



**Lead Acid Battery Definition:** A lead acid battery is defined as a rechargeable battery that uses lead and sulfuric acid to store and release electrical energy.

**Container Construction:** The container is made from acid-resistant materials and includes features to support and separate the plates.



## Solar base station lead-acid battery construction is divided into



### [Understanding Cell and Battery Construction](#)

In this article, learn the aspects of cell and battery construction, including electrodes, separators, electrolytes, and the difference between stacked plates and cylindrical ...

[Request Quote](#)

### [What is Lead Acid Battery? Construction, Working, ...](#)

The construction of a lead acid battery cell is as shown in Fig. 1. It consists of the following parts : Anode or positive terminal (or plate). ...

[Request Quote](#)



### [Lead Acid Battery , Construction, Working and ...](#)

When the lead plates are placed in the acid, a chemical reaction takes place, which produces electricity. This process can be ...

[Request Quote](#)



## Construction of Lead Acid Battery

The main feature of construction of lead acid battery is to accommodate a large volume of active materials i.e.  $PbO_2$  in active plate. Positive plates are usually produced by ...

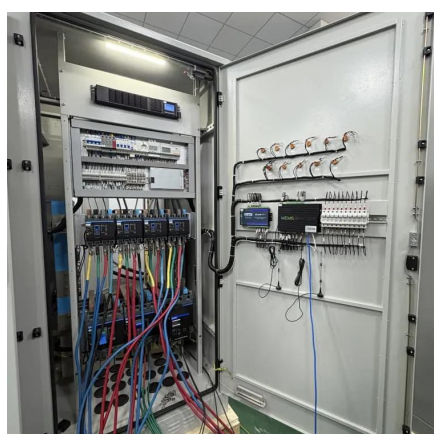
[Request Quote](#)



## [Understanding Cell and Battery Construction](#)

In this article, learn the aspects of cell and battery construction, including electrodes, separators, electrolytes, and the ...

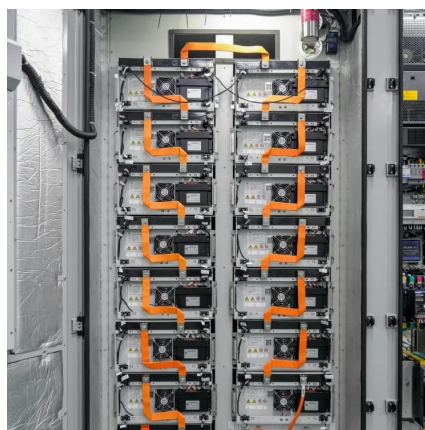
[Request Quote](#)



## **Lead Acid Battery: Construction, Working, Diagram & Reactions**

By combining energy requirements, voltage, Depth of Discharge, and efficiency margin, you can accurately size a lead acid battery for solar setups, UPS systems, or other backup power ...

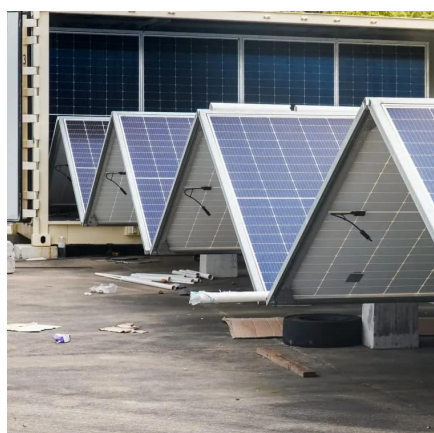
[Request Quote](#)



## **What is Lead Acid Battery? Construction, Working, Connection ...**

The construction of a lead acid battery cell is as shown in Fig. 1. It consists of the following parts : Anode or positive terminal (or plate). Cathode or negative terminal (or plate). ...

[Request Quote](#)



## **Construction of Lead Acid Battery**



The main feature of construction of lead acid battery is to accommodate a large volume of active materials i.e. PbO<sub>2</sub> in active ...

[Request Quote](#)



### [Lead Acid Battery , Construction, Working and Application](#)

When the lead plates are placed in the acid, a chemical reaction takes place, which produces electricity. This process can be reversed to recharge the battery. When several ...

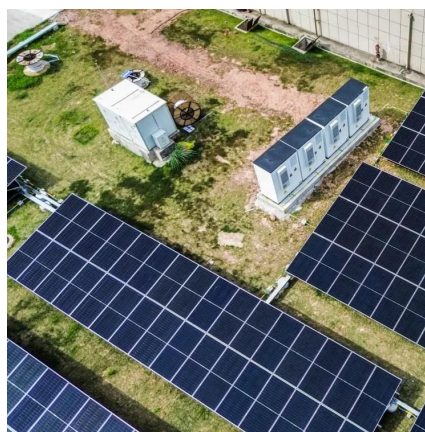
[Request Quote](#)



### [Lead-acid battery construction, chemistry and application](#)

There are many different batteries currently in production in the world. Lead-acid batteries can be first described by type or construction: Sealed Valve Regulated or Starved Electrolyte batteries.

[Request Quote](#)



### [Lead Acid Battery: Construction, Working, Diagram ...](#)

By combining energy requirements, voltage, Depth of Discharge, and efficiency margin, you can accurately size a lead acid battery for solar ...

[Request Quote](#)



## **Lead Acid Battery: What's Inside,**



## Components, Construction, and ...

A lead-acid battery has three main parts: the negative electrode (anode) made of lead, the positive electrode (cathode) made of lead dioxide, and an electrolyte of aqueous ...

[Request Quote](#)



## [HANDBOOK OF SECONDARY STORAGE BATTERIES ...](#)

In a lead-acid cell the active materials are lead dioxide ( $PbO_2$ ) in the positive plate, sponge lead ( $Pb$ ) in the negative plate, and a solution of sulfuric acid ( $H_2SO_4$ ) in water as the electrolyte.

[Request Quote](#)



## Contact Us

---

For catalog requests, pricing, or partnerships, please visit:

<https://www.energyinnovationday.pl>

Phone: +48 22 335 1273

Email: [info@energyinnovationday.pl](mailto:info@energyinnovationday.pl)

Scan the QR code to contact us via WhatsApp.

