

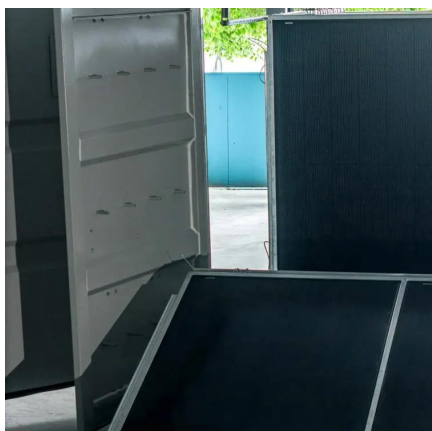


# San Jose Electric Integrated 5G Base Station





## San Jose Electric Integrated 5G Base Station



### [San Jose strikes deal with PG& E, committing utility ...](#)

Over the past several months, PG& E has announced or undertaken several projects to improve reliability and performance, as ...

[Request Quote](#)

### **PG& E Begins Energy Infrastructure Upgrades to Bring San Jose...**

On April 8, the San Jose City Council unanimously approved the advancement of the first two data centers, marking a significant step toward their development, with the first ...

[Request Quote](#)



### [PG& E and Smart Wires Enhance Grid Reliability, ...](#)

The project will boost capacity by more than 100 megawatts (MW) at the substation, which is located adjacent to new data centers ...

[Request Quote](#)



### [San Jose signs first of its kind agreement with PG& E , KALW](#)

The City of San Jose could see an uptick in data centers after signing a first of its kind agreement with PG& E. The agreement, which was signed on Friday, guarantees speedy ...



[Request Quote](#)



## San José and PG& E Strike Deal to Attract Data Centers to South ...

In an interview with KQED, Mahan said the deal will allow the city and PG& E to offer "speed and certainty" to developers to help ensure data centers stay in Silicon Valley, ...

[Request Quote](#)

## PG& E sees "huge" data center demand in San Jose area as tech ...

PG& E Substation B is visible next to a field near the corner of Coleman Avenue and Santa Teresa Street in downtown San Jose.

[Request Quote](#)



## San Jose strikes deal with PG& E, committing utility provider to

The first transmission line runs through North San Jose, coming down from Fremont on a path near the regional wastewater facility. The second line runs from the Metcalf ...

[Request Quote](#)

## PG& E and Smart Wires Enhance Grid



## Reliability, Capacity for ...

The project will boost capacity by more than 100 megawatts (MW) at the substation, which is located adjacent to new data centers under development in the Alviso ...

[Request Quote](#)



## [NEWS RELEASE: City of San José Announces Historic ...](#)

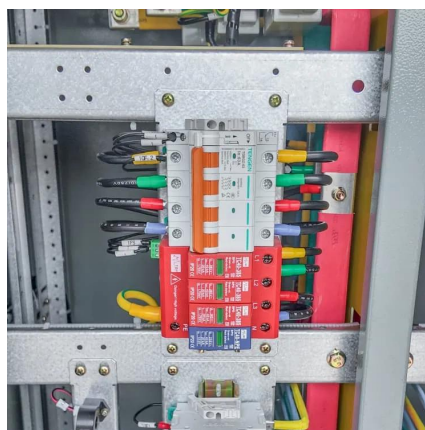
San José and PG& E are seeing an unprecedented amount of energy demand from new data centers. Currently, PG& E has requests for nearly 2,000 megawatts of new demand ...

[Request Quote](#)

## [San José and PG& E Strike Deal to Attract Data ...](#)

In an interview with KQED, Mahan said the deal will allow the city and PG& E to offer "speed and certainty" to developers to help ensure ...

[Request Quote](#)



## [Smart Wires & PG& E Expand Grid Capacity in San Jose](#)

The project will boost capacity by more than 100 megawatts (MW) at the substation, which is located adjacent to new data centers under development in the Alviso ...

[Request Quote](#)

## San Jose strikes deal with PG& E,



## committing utility provider to

Over the past several months, PG& E has announced or undertaken several projects to improve reliability and performance, as well as increase capacity, including ...

[Request Quote](#)





## Contact Us

---

For catalog requests, pricing, or partnerships, please visit:

<https://www.energyinnovationday.pl>

Phone: +48 22 335 1273

Email: [info@energyinnovationday.pl](mailto:info@energyinnovationday.pl)

Scan the QR code to contact us via WhatsApp.

