



# Roof solar panels load bearing





## Overview

---

Assess your roof's load-bearing capacity to support the weight of the solar panel system. Identify any obstructions or shading that could impact the efficiency of your solar panels. Ensure your roof's ventilation system is compatible with solar panel installations.

Assess your roof's load-bearing capacity to support the weight of the solar panel system. Identify any obstructions or shading that could impact the efficiency of your solar panels. Ensure your roof's ventilation system is compatible with solar panel installations.

Deciding to install solar panels introduces a significant consideration beyond cost and energy savings: the structural integrity of the roof itself. Before any equipment is purchased or plans are finalized, homeowners must determine if the existing roof framing can safely handle the additional.

Roof load distribution calculations for solar panel structural safety are essential for ensuring your solar energy system remains secure and effective. Understanding how to accurately assess weight distribution on your roof helps prevent damage and maximizes your investment. Hevan provides clear.

Installing a rooftop solar array is a significant step toward energy independence. While much attention is given to panel efficiency and inverter capacity, the underlying support structure—the racking mounted on your roof—is equally critical. A thorough structural load analysis is not just a.

### How to Calculate the Solar Panel Roof Load?

To calculate the solar panel roof load, you'll want to dive into two main areas: point load and distributed load. The point load represents the pressure applied to specific points where the solar panels and their mounting hardware attach to the roof. It's.

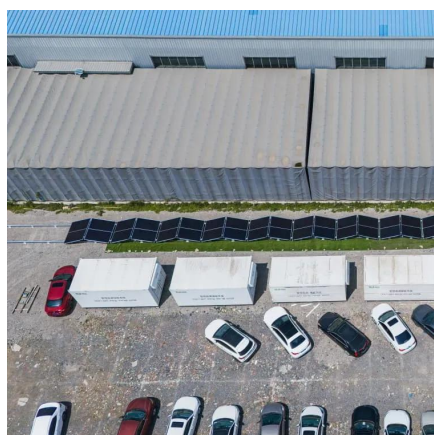
Discover how to safely install solar panels by calculating your roof's load capacity, considering dead and live loads, and determining if structural reinforcement is needed. Installing solar panels on your roof is a smart investment, but first you need to ensure your home can handle the additional.



Evaluating a roof's structure, load capacity, and regulations is crucial for safe solar panel installation. Evaluating a roof's structure, load capacity, and regulations is crucial for safe solar panel installation. To effectively determine if a roof can support solar panels, a comprehensive.



## Roof solar panels load bearing



### Solar Panel Roof Load Calculator

How to Calculate the Solar Panel Roof Load? To calculate the solar panel roof load, you'll want to dive into two main areas: point load and distributed load. The point load ...

[Request Quote](#)

### [Structural Requirements for Solar Panels](#) -- [Exactus Energy](#)

This comprehensive guide outlines the structural requirements for solar panels and provides an overview on the inner workings of the installation process.

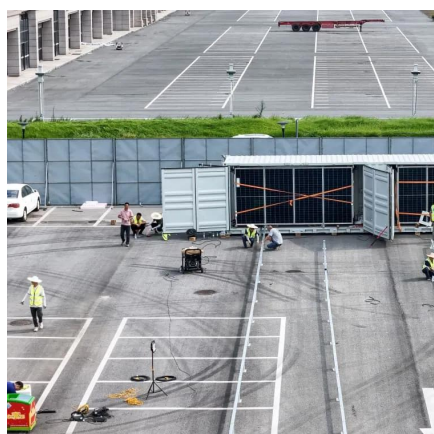
[Request Quote](#)



### How do you determine if a roof can handle the weight of solar ...

How do you determine if a roof can handle the weight of solar panels? Evaluating a roof's structure, load capacity, and regulations is crucial for safe solar panel installation.

[Request Quote](#)



### How to run a structural load analysis for rooftop PV racking

This guide details the critical steps for a structural load analysis of PV racking, from wind load calculations to assessing your roof's capacity for a secure solar installation.



[Request Quote](#)



## How do you determine if a roof can handle the weight of solar panels?

How do you determine if a roof can handle the weight of solar panels? Evaluating a roof's structure, load capacity, and regulations is crucial for safe solar panel installation.

[Request Quote](#)



## Can My Roof Support Solar Panels?

The most straightforward force applied to a roof is the static weight of the solar equipment, known as the dead load. This includes the panels themselves, the mounting ...

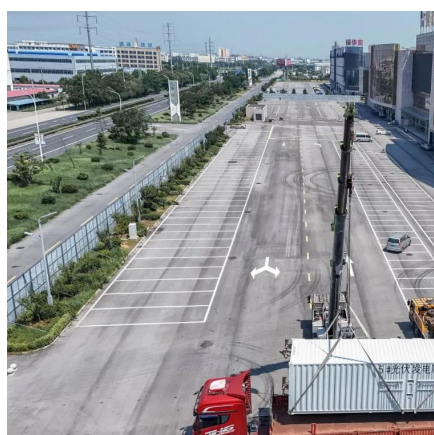
[Request Quote](#)



## [Solar Panel Roof Requirements: What You Need to Know](#)

Discover essential roof requirements for solar panels. Learn about pitch, load capacity, and materials to ensure your home is ready for a solar energy system.

[Request Quote](#)



## [Understanding Roof Load Capacity for](#)



## [Solar Panels](#)

Learn more about all you need to know about roof loads, load capacities and how they determine if a roof can support the weight of solar panels. Roof load capacity is simply a ...

[Request Quote](#)



## **7 Steps to Calculate Roof Load Capacity for Solar Panels ...**

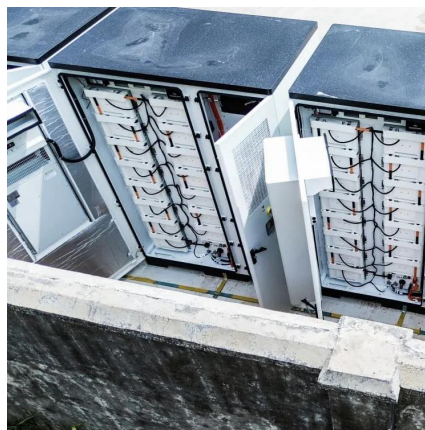
Discover how to safely install solar panels by calculating your roof's load capacity, considering dead and live loads, and determining if structural reinforcement is needed.

[Request Quote](#)

## **Roof Load Distribution Calculations for Solar Panel Structural Safety**

Roof load distribution calculations for solar panel structural safety are essential for ensuring your solar energy system remains secure and effective. Understanding how to ...

[Request Quote](#)



## **Assessing Your Roof's Load-Bearing Capacity for Solar Panels**

Calculating your roof's load-bearing capacity involves assessing the weight of the solar panels, considering structural support elements, and potentially reinforcing the roof to ...

[Request Quote](#)



## Contact Us

---

For catalog requests, pricing, or partnerships, please visit:

<https://www.energyinnovationday.pl>

Phone: +48 22 335 1273

Email: [info@energyinnovationday.pl](mailto:info@energyinnovationday.pl)

Scan the QR code to contact us via WhatsApp.

