



R48-1800a change inverter





Overview

What is the r48-1800a rectifier?

This document provides information about the R48-1800A rectifier, which converts AC power to stable -48V DC power. Some key details include: - The rectifier uses the latest switch-mode technology and digital signal processing for efficient operation. - It has an optimized compact design that allows installation in short-depth racks.

What is r48-1800a?

The R48-1800A is a constant power Signal Processor) functionality for efficient operation. For a higher load capacity, help of a separate controller. Red LED HVSD indicating lamp. Blinking Red LED Fan Fault. Emerson Network Power. AC Power Systems Embedded Power Outside Plant business-critical continuity.

What is the output voltage of r48-1800a?

Model: R48-1800A Brand: Emerson Input: 200-250v 12a 50 / 60Hz Output: - 48V 1740w Max Main protection functions of R48-1800A Emerson high frequency switching power supply module 1. Input over / under voltage protection.

What are the protection functions of r48-1800a Emerson High frequency switching power supply module?

Output: - 48V 1740w Max Main protection functions of R48-1800A Emerson high frequency switching power supply module 1. Input over / under voltage protection When the input voltage is less than 80vac \pm 5vac or greater than 305vac \pm 5vac, the protection indicator (yellow light) will be on, and the module will stop working without output.



R48-1800a change inverter



[Emerson r48 1800a , PDF , Electric Power System](#)

Transition between modes is completely automatic. Constant Voltage Mode: For any initial output voltage setting from 47 to 58 volts, output voltage ...

[Request Quote](#)

Old Vertiv Electric Network Switching Power R48-1800A Inverter ...

Old Vertiv Electric Network Switching Power R48-1800A Inverter Power Supply Emerson Network Power R48-1800UO Rectifier Module

[Request Quote](#)



[R48-1800 Datasheet Rev2.5 20061211 , PDF](#)

The R48-1800 is a constant power rectifier that converts AC power to stable -48V DC power. It has a high efficiency of up to 91% and ...

[Request Quote](#)



R48-1800A Datasheet Rev1.4 20061211

This document provides information about the R48-1800A rectifier, which converts AC power to stable -48V DC power. Some key ...

[Request Quote](#)



[{1011A} Emerson R48-1800A Circuit description](#)

in this video number {1011A} Emerson R48-1800A Circuit description, i explained working principle of R481800A rectifier unit You are Invited to Join Haseeb Electronics / @haseebelectronics To

[Request Quote](#)

R48-1800A

The R48-1800A is a constant power rectifier designed with the latest patented switch-mode technology using DSP (Digital Signal Processor) functionality for efficient operation.

[Request Quote](#)



R48-1800A Datasheet Rev1.4 20061211

This document provides information about the R48-1800A rectifier, which converts AC power to stable -48V DC power. Some key details include: - The rectifier uses the latest ...

[Request Quote](#)

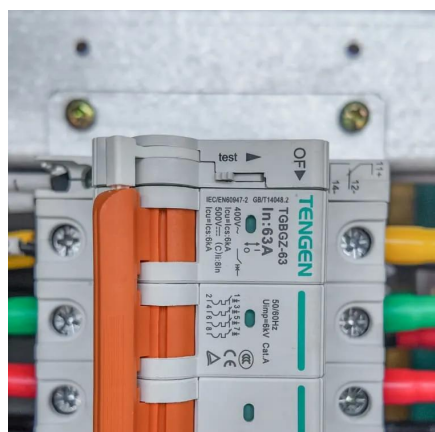
R48-1800 Datasheet Rev2.5



20061211 , PDF , Rectifier , Direct ...

The R48-1800 is a constant power rectifier that converts AC power to stable -48V DC power. It has a high efficiency of up to 91% and can provide 1700W of output power. The ...

[Request Quote](#)



Emerson Rectifier R48-1800A

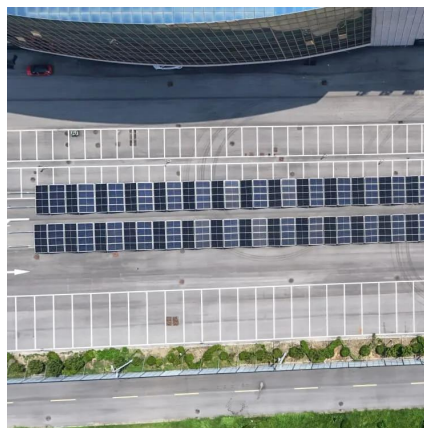
The R48-1800A is a constant power rectifier designed with the latest patented switch-mode technology using DSP (Digital Signal Processor) ...

[Request Quote](#)

Emerson R48-1800A Rectifier Module

When the input voltage is less than $80\text{vac} \pm 5\text{vac}$ or greater than $305\text{vac} \pm 5\text{vac}$, the protection indicator (yellow light) will be on, and the module will stop working without output. When the ...

[Request Quote](#)



Emerson R48-1800A 48V Rectifier Module Switching Power Supply

EATOP Industrial Limited offers a high quality and high reliability AC/DC and DC/DC power supplies. We specialize in low to MID-range power (1 - 600 watts), also Industrial, Telecom, ...

[Request Quote](#)

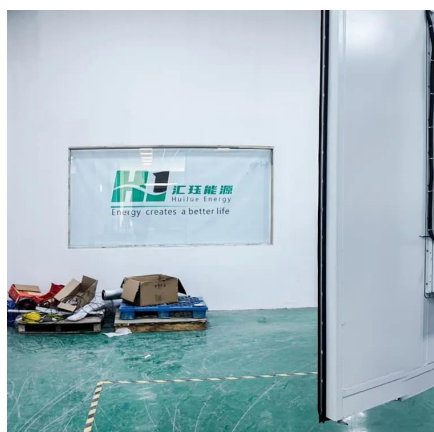
Emerson r48 1800a , PDF , Electric Power



System

Transition between modes is completely automatic. Constant Voltage Mode: For any initial output voltage setting from 47 to 58 volts, output voltage remains constant regardless of load. This is ...

[Request Quote](#)



Emerson Telecom Rectifier r48-1800a

The R48-1800 is a constant power rectifier designed with the latest patented switch-mode technology using DSP (Digital Signal Processor) functionality for efficient operation.

[Request Quote](#)

Emerson R48-1800A Rectifier Module

When the input voltage is less than $80\text{vac} \pm 5\text{vac}$ or greater than $305\text{vac} \pm 5\text{vac}$, the protection indicator (yellow light) will be on, and the module will ...

[Request Quote](#)



Emerson Rectifier R48-1800A

The R48-1800A is a constant power rectifier designed with the latest patented switch-mode technology using DSP (Digital Signal Processor) functionality for efficient operation.

[Request Quote](#)



Contact Us

For catalog requests, pricing, or partnerships, please visit:

<https://www.energyinnovationday.pl>

Phone: +48 22 335 1273

Email: info@energyinnovationday.pl

Scan the QR code to contact us via WhatsApp.

