



Pwm output voltage inverter can adjust frequency





Overview

Pulse-width modulation (PWM), also known as pulse-duration modulation (PDM) or pulse-length modulation (PLM), is any method of representing a signal as a series of pulses with a varying width (and for some methods also a varying period). PWM is useful for controlling the average power delivered by an electrical device.

With PWM, a fixed DC input voltage source can produce a sinusoidal output waveform with variable frequency and amplitude. PWM methodologies in inverters provide fine control over the output voltage waveform in VSIs, enabling accurate voltage regulation as well as current regulation.

With PWM, a fixed DC input voltage source can produce a sinusoidal output waveform with variable frequency and amplitude. PWM methodologies in inverters provide fine control over the output voltage waveform in VSIs, enabling accurate voltage regulation as well as current regulation.

A common control method in power electronics for managing the output voltage of converters, particularly DC/AC inverters, is pulse width modulation (PWM). The basic concept behind PWM is to adjust the output pulse width in order to regulate the average output voltage. With PWM, a fixed DC input.

The inverter therefore is an adjustable-frequency voltage source. The configuration of ac to dc converter and dc to ac inverter is called a dc-link converter. source inverters. A voltage-fed inverter (VFI) or more generally a voltage-source inverter (VSI) is one in which the dc source has small or.

Compare the quality of output voltage produced by different PWM inverters. Decide on voltage and current ratings of inverter switches. Pulse width modulated (PWM) inverters are among the most used power-electronic circuits in practical applications. These inverters are capable of producing ac.

Pulse-width modulation (PWM), also known as pulse-duration modulation (PDM) [a] or pulse-length modulation (PLM), [1] is any method of representing a signal as a rectangular wave with a varying duty cycle (and for some methods also a varying period). PWM is useful for controlling the average power.

The article discusses the functionality and advantages of Pulse Width Modulated (PWM) inverters, focusing on their ability to control voltage and frequency using intelligent switching. It also highlights the evolution of PWM technology, including



the impact of high-frequency switching and the.

Pulse Width Modulation (PWM) is a technique used to vary voltage and frequency in motor control systems, such as those employing AC drives. It achieves this by rapidly switching the power supplied to a motor on and off, creating a waveform that mimics a sinusoidal voltage at a desired frequency and.



Pwm output voltage inverter can adjust frequency



How does pulse width modulation (PWM) vary voltage and frequency?

In summary, PWM varies voltage by adjusting the duty cycle of the pulses, and it varies frequency by changing the rate at which the pulses are generated, allowing precise control of motor ...

[Request Quote](#)

Pulse Width Modulation (PWM) Inverter

PWM inverters have a wide range of applications in industrial and electronic fields. They are used in variable frequency drives (VFDs) to control the speed of AC motors by ...

[Request Quote](#)



Pulse Width Modulated Inverter , PWM Inverter

The Pulse Width Modulated (PWM) inverter offers the ability to change both the magnitude of the voltage and the frequency using a fixed DC voltage as the input.

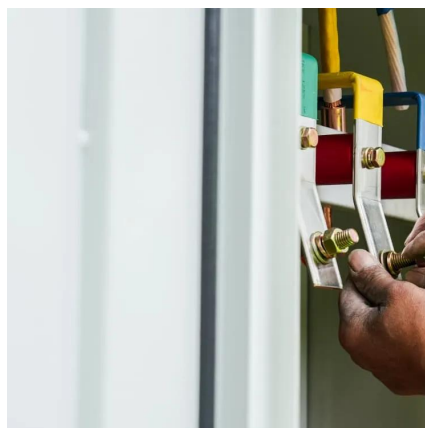
[Request Quote](#)



Pulse Width Modulation (PWM) Inverter

PWM inverters have a wide range of applications in industrial and electronic fields. They are used in variable frequency drives (VFDs) ...

[Request Quote](#)



Pulse-width modulation

The goal of PWM is to control a load; however, the PWM switching frequency must be selected carefully in order to smoothly do so. The PWM switching frequency can vary greatly depending ...

[Request Quote](#)

Pulse Width Modulation (PWM) Techniques

With PWM, a fixed DC input voltage source can produce a sinusoidal output waveform with variable frequency and amplitude. PWM methodologies in ...

[Request Quote](#)



Pulse Width Modulation (PWM) Techniques

With PWM, a fixed DC input voltage source can produce a sinusoidal output waveform with variable frequency and amplitude. PWM methodologies in inverters provide fine control over ...

[Request Quote](#)



CHAPTER 2



source. A voltage source inverter employing thyristors as switches, some type of forced commutation is required, while the VSIs made up of using GTOs, power transistors, power ...

[Request Quote](#)



[PWM Controller ICs: Your Guide To Inverter Efficiency](#)

The IC constantly monitors the output and adjusts the PWM signal to maintain the desired voltage and frequency, compensating for variations in input voltage and load.

[Request Quote](#)

Pulse-width modulation

Overview Duty cycle History Principle PWM sampling theorem Applications See also External links

Pulse-width modulation (PWM), also known as pulse-duration modulation (PDM) or pulse-length modulation (PLM), is any method of representing a signal as a rectangular wave with a varying duty cycle (and for some methods also a varying period). PWM is useful for controlling the average power or amplitude delivered by an el...

[Request Quote](#)



[What is a PWM Inverter: Types and Applications](#)

PWM inverter are widely used in variable frequency drives (VFDs) for controlling the speed and torque of AC motors. They provide ...

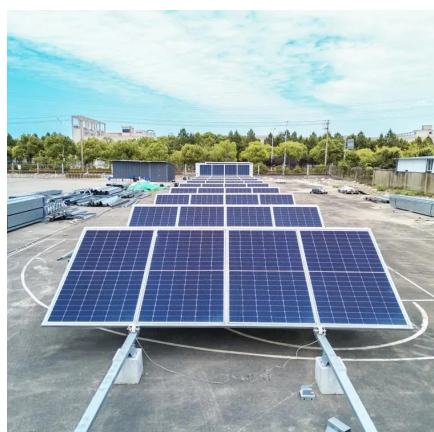
[Request Quote](#)



CSM_Inverter_TG_E_1_1

Features Freely Set and Change AC Power Frequency and Voltage An inverter uses this feature to freely control the speed and torque of a motor. This type of control, in which the frequency ...

[Request Quote](#)



How does pulse width modulation (PWM) vary voltage and frequency?

In summary, PWM varies voltage by adjusting the duty cycle of the pulses, and it varies frequency by changing the rate at ...

[Request Quote](#)

Lesson No

Pulse width modulated (PWM) inverters are among the most used power-electronic circuits in practical applications. These inverters are capable of producing ac voltages of variable ...

[Request Quote](#)



[Pulse Width Modulated Inverter , PWM Inverter](#)

The Pulse Width Modulated (PWM) inverter offers the ability to change both the magnitude of the voltage and the frequency using a fixed DC voltage ...

[Request Quote](#)

[What is a PWM Inverter: Types and](#)



[Applications](#)

PWM inverter are widely used in variable frequency drives (VFDs) for controlling the speed and torque of AC motors. They provide precise control over motor speed by adjusting ...

[Request Quote](#)





Contact Us

For catalog requests, pricing, or partnerships, please visit:

<https://www.energyinnovationday.pl>

Phone: +48 22 335 1273

Email: info@energyinnovationday.pl

Scan the QR code to contact us via WhatsApp.

