



# Price of solar module lifting device





## Overview

---

The Fluke PV Module Lift is designed to make solar panel installation faster, safer, and more efficient. With a lightweight yet rugged build, it sets up in under five minutes by a single person and helps installers meet OSHA ladder safety standards.

The Fluke PV Module Lift is designed to make solar panel installation faster, safer, and more efficient. With a lightweight yet rugged build, it sets up in under five minutes by a single person and helps installers meet OSHA ladder safety standards.

From solar clamp meters, solar irradiance meters, and residential PV testers to category-rated equipment used to commission, maintain, and troubleshoot PV installations, Fluke test tools have you covered. MODULIFT uses your existing fiberglass Werner or Louisville extension ladder. A pulley system.

The 3S LIFT Ladder Hoist provides a solution for lifting heavy & oversized materials to the rooftop with ease. This unit proves to be an excellent resource for items such as CMU/Ballast Block and Solar Panels/Modules. This model is electric powered and operates at 120 volts, providing continuous.

The Fluke SOL-MODULIFT2L Solmetric PV Module Ladder Pulley System is designed to transport PV modules onto a rooftop safely and quickly without damaging them and without the need to use a motor or engine. The pulley mechanism's 'hook' securely attaches to the PV module's frame and prevents lateral.

The Solmetric Module Lift is designed to safely and quickly transport a PV module to a roof. The device uses your existing fiberglass Werner or Louisville extension ladder. A pulley system is attached to the top of the ladder. A patented module "hook" attaches to the edge of a PV module frame and.

The Module Lift is an economical system for getting PV modules onto a rooftop safely and quickly without damaging them. It is an additional Solmetric accessory, unrelated to PVA use. It uses your existing ladder and is compatible with fiberglass extension ladders from Louisville and Werner.

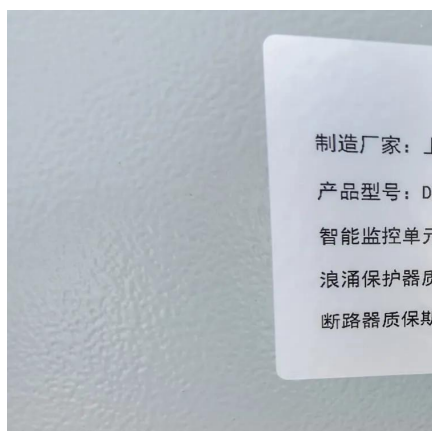
The Fluke Module Lift™ is designed to safely and quickly transport a PV module to



a roof, streamlining the installation process of solar panels. This innovative tool enables you to lift solar modules to the roof with ease and precision, making installation faster, safer, and more efficient. With.



## Price of solar module lifting device



### [Fluke SOL-MODULIFT2L Solmetric PV Module ...](#)

Whenever transporting PV modules, protecting them from damage and ...

[Request Quote](#)

### [Solarlift - Professional Mounting for PV-Systems , GEDA](#)

The lift's acquisition costs are worth the money and the lift itself is quite space-saving. Its construction is made of separate modules that can easily be assembled in the desired ladder ...

[Request Quote](#)



### [Module Lift: Premier Solar Panel Lifter](#)

The Solmetric Module Lift is designed to safely and quickly transport a PV module to a roof. The device uses your existing fiberglass Werner or Louisville extension ladder.

[Request Quote](#)

### [Fluke Module Lift\(TM\) , Streamline Solar Panel Installation](#)

The Fluke Module Lift(TM) is designed to safely and quickly transport a PV module to a roof, streamlining the installation process of solar panels. This innovative tool enables you to lift ...



[Request Quote](#)



## Solar Panel Lift

Solarlift options include the GEDA Lift 200 Standard and the GEDA Lift 250Comfort, available with a single lift speed. For job sites requiring more flexibility, the Fixlift 250 is built with two lift ...

[Request Quote](#)



## Fluke SOL-MODULIFT2L



## Fluke SOL-MODULIFT2L

The Module Lift is an economical system for getting PV modules onto a rooftop safely and quickly without damaging them. It is an additional Solmetric accessory, unrelated to PVA use.

[Request Quote](#)



## [Fluke SOL-MODULIFT2L Solmetric PV Module Lift, 80 ft. Rope](#)

Whenever transporting PV modules, protecting them from damage and microcracking is a major concern. The Module Lift is designed to minimize impact throughout the process. All taxes, ...

[Request Quote](#)



The Module Lift is an economical system for getting PV modules onto a rooftop safely and quickly without damaging them. It is an additional ...

[Request Quote](#)



### [Solar Safety Innovation , Solar Panel Lifter](#)

The Solar Coaster is a portable, lightweight, fully assembled solar panel hoist that reduces labour costs, improves safety, and streamlines residential solar installations.

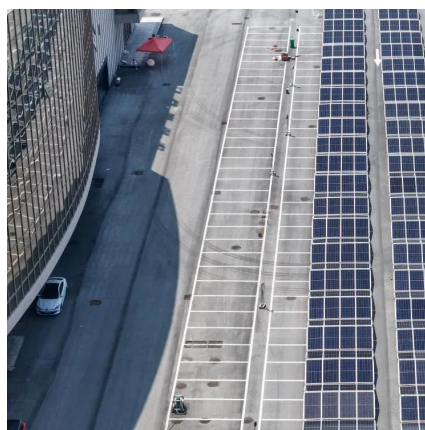
[Request Quote](#)



### [What do you want to lift? Solar Panels , TAWI](#)

Whether you're looking to streamline handling processes, reduce labor costs, or improve operational safety, our solutions are designed to lift, rotate and move solar panels carefully ...

[Request Quote](#)



### [Module Lift: Premier Solar Panel Lifter](#)

The Solmetric Module Lift is designed to safely and quickly transport a PV module to a roof. The device uses your existing fiberglass Werner or ...

[Request Quote](#)



### [Fluke MODULIFT2L, Solmetric PV Module](#)



### [Ladder Pulley ...](#)

The Fluke PV Module Lift is designed to make solar panel installation faster, safer, and more efficient. With a lightweight yet rugged build, it sets up in under five minutes by a ...

[Request Quote](#)



### [Fluke Module Lift\(TM\) , Streamline Solar Panel ...](#)

The Fluke Module Lift(TM) is designed to safely and quickly transport a PV module to a roof, streamlining the installation process of solar panels. ...

[Request Quote](#)



### **3S Lift Solar Panel Hoist (electric)**

The 3S LIFT Ladder Hoist System is a portable solution for lifting heavy & oversized materials, like CMU/Ballast Block and Solar Panels/Modules, vertically to the rooftop hands-free.

[Request Quote](#)





## Contact Us

---

For catalog requests, pricing, or partnerships, please visit:

<https://www.energyinnovationday.pl>

Phone: +48 22 335 1273

Email: [info@energyinnovationday.pl](mailto:info@energyinnovationday.pl)

Scan the QR code to contact us via WhatsApp.

