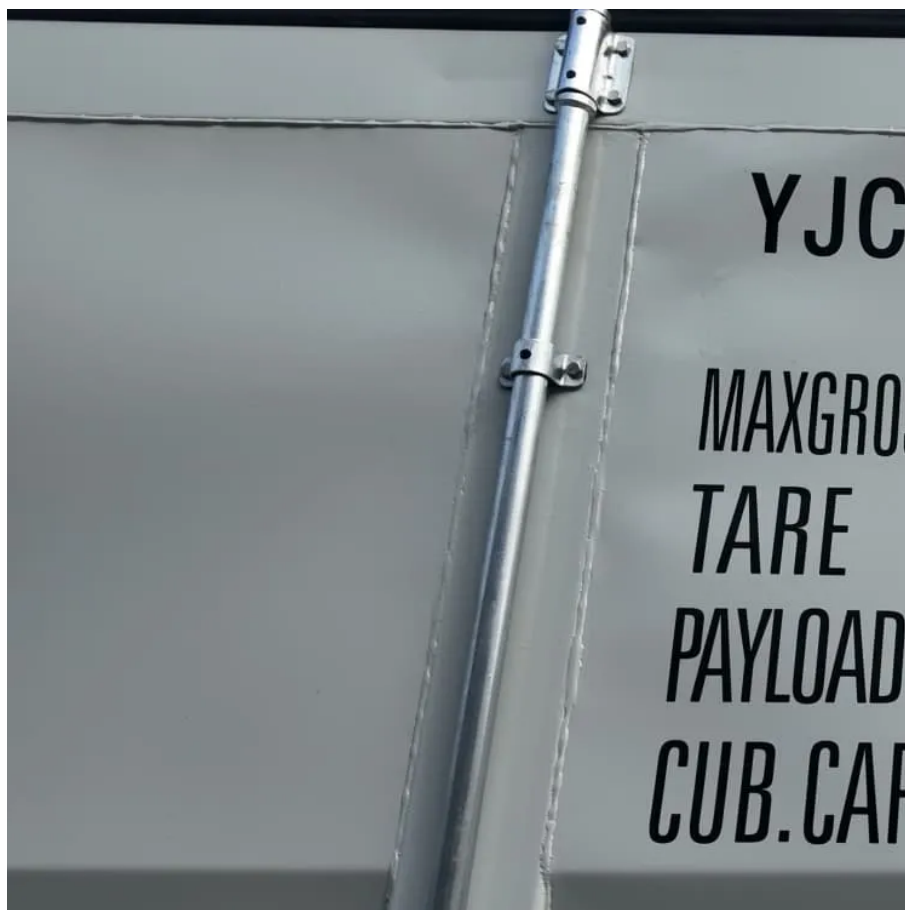




Power frequency and high frequency inverter sine wave





Overview

The low frequency inverters typically operate at ~60 Hz frequency. To produce a sine wave output, high-frequency inverters are used. These inverters use the pulse-width modification method: switching currents at high frequency, and for variable periods of time.

The low frequency inverters typically operate at ~60 Hz frequency. To produce a sine wave output, high-frequency inverters are used. These inverters use the pulse-width modification method: switching currents at high frequency, and for variable periods of time.

When choosing a pure sine wave inverter, one key decision lies in the internal architecture: power frequency (low frequency) vs high frequency. Both types provide clean AC output, but they differ significantly in performance, efficiency, size, and application. 1. Working Principle Use a bulky iron.

The low frequency inverters typically operate at ~60 Hz frequency. To produce a sine wave output, high-frequency inverters are used. These inverters use the pulse-width modification method: switching currents at high frequency, and for variable periods of time. For example, very narrow (short).

Among them, power frequency inverter and high frequency inverter are two common inverter types, each with different characteristics and application scenarios. So, which one is better, a power frequency inverter or high frequency inverter?

Inverter.com will conduct a detailed comparison and analysis.

We produce only pure sine wave inverters, which are more efficient and have a broader range of suitable appliances they can power, compared to modified sine wave inverters. What internal frequency the inverter circuits operate at - low frequency or high frequency (not to be confused with AC power).

According to waveform classification, there are two main types, one is a modified sine wave inverter and the other is a pure sine wave inverter. Most electrical appliances can use modified sine wave inverters normally, such as light bulbs, appliances with compressors, and power tools. But.



There are two main types of inverters: low-frequency inverters and high-frequency inverters. Low-frequency inverters operate at a frequency of 50 or 60 Hz, which is the same frequency as the AC electricity grid. High-frequency inverters operate at a much higher frequency, typically 20,000 to.



Power frequency and high frequency inverter sine wave



[6.4. Inverters: principle of operation and parameters](#)

To produce a sine wave output, high-frequency inverters are used. These inverters use the pulse-width modulation method: switching currents at high frequency, and for variable periods of time.

[Request Quote](#)

power automate

Creating a flow in Power Automate: New Step
Choose the OneDrive "Get file content" action File
= /Documents/Folder/File.json Infer Content Type
= Yes New Step Choose ...

[Request Quote](#)



[Extract Value from Array in Power Automate](#)

Extract Value from Array in Power Automate Asked
1 year, 2 months ago Modified 9 months ago
Viewed 6k times

[Request Quote](#)

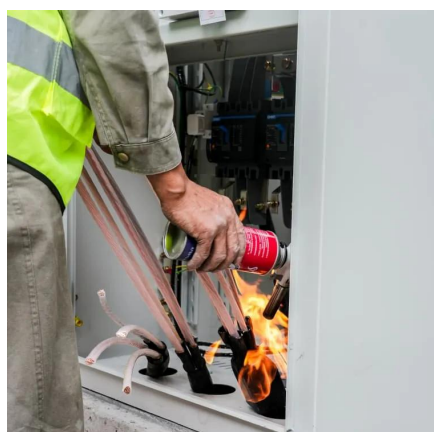


Technical comparison between Low Frequency Inverter VS high Frequency

We produce only pure sine wave inverters, which are more efficient and have a broader range of suitable appliances they can power, compared to modified sine wave inverters.



[Request Quote](#)



[Low frequency inverter vs high frequency inverter](#)

When choosing an inverter for your solar system, one of the key decisions is whether to use a low-frequency inverter or a high-frequency inverter. Both types have unique ...

[Request Quote](#)

PowerAutomate JSON

You then need to add a Parse JSON action to tell power automate the schema of the data assigned in the initialize variable action. This will allow us to more easily reference the ...

[Request Quote](#)



Power inverter

A power inverter, inverter, or invertor is a power electronic device or circuitry that changes direct current (DC) to alternating current (AC). The resulting AC frequency obtained

[Request Quote](#)

How do I refresh an Excel Power



Query using Power Automate ...

0 I have data being pulled from a SharePoint list to an Excel file and I'm trying to use Power Automate online to create a scheduled flow that will trigger the "Refresh All" button ...

[Request Quote](#)



[How to solve the network error when using a patch function?](#)

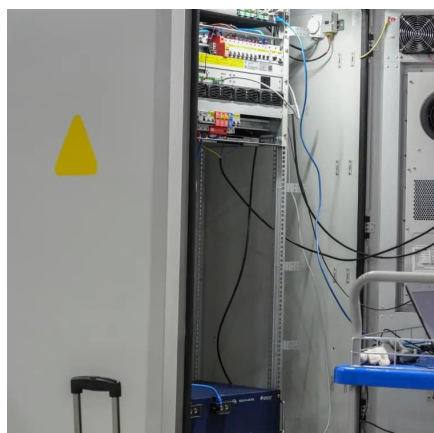
Below are some of the reasons you get the network error when using a patch function in Microsoft Power Apps applications: One of the columns in your SharePoint list is ...

[Request Quote](#)

Power Automate

I have created a Flow in Power automate, have used a Refresh a Power BI dataset component, there is no issue in terms of functionality as such and I am able to refresh ...

[Request Quote](#)



How to use Power Automate flows to manage user access to ...

Send an HTTP request to SharePoint action in Power automate flows works with SharePoint REST APIs. Follow below Microsoft official documentations for SharePoint REST ...

[Request Quote](#)

Power Frequency Inverter vs. High



Frequency Inverter: Which is ...

Among them, power frequency inverter and high frequency inverter are two common inverter types, each with different characteristics and application scenarios. So, ...

[Request Quote](#)



Data Source Credentials and Scheduled Refresh greyed out in ...

Data Source Credentials and Scheduled Refresh greyed out in Power BI Service Asked 4 years, 8 months ago Modified 3 years, 4 months ago Viewed 18k times

[Request Quote](#)

powerbi

In Power Automate, within the Power BI connector, you'll find the "Run a query against a dataset" action. Take note: this can only return one table at a time with max of 1,000 ...

[Request Quote](#)



Inverter Low Frequency vs High Frequency , How Do I Compare?

Waveform Quality: High-frequency inverters often produce a modified sine wave, also known as a quasi-sine wave. This waveform may not be as smooth as a pure sine wave, ...

[Request Quote](#)

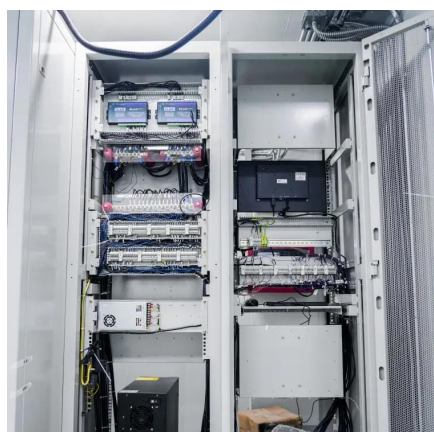
[Running Python scripts in Microsoft Power](#)



[Automate Cloud](#)

I use Power Automate to collect responses from a Form and send emails based on the responses. The main objective is to automate decision-making using Python to approve or ...

[Request Quote](#)



Which is better, power frequency inverter or high-frequency inverter?

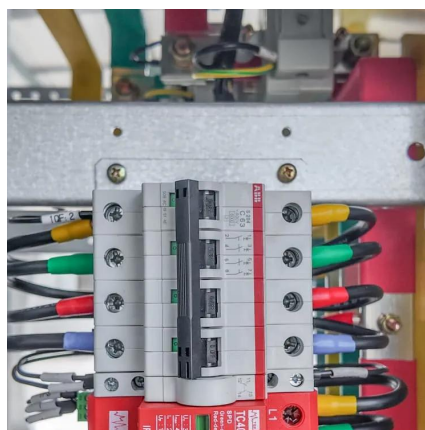
Knowing that pure sine wave inverters are the first choice is actually not enough, because they are also subdivided into two types: power frequency inverters and high ...

[Request Quote](#)

[High frequency vs low frequency pure sine wave inverter](#)

There are two types of power inverters on the market: low frequency inverter and high frequency inverter. No matter the inverter is high or low frequency, there are pros and ...

[Request Quote](#)



[Comparing High-Frequency vs. Low-Frequency Inverters](#)

High-frequency inverters operate at frequencies typically above 20 kHz, producing a modified sine wave or a pure sine wave output. Pure sine wave inverters provide a smoother and more ...

[Request Quote](#)

Power Frequency vs High Frequency



Pure Sine Wave Inverters: ...

When choosing a pure sine wave inverter, one key decision lies in the internal architecture: power frequency (low frequency) vs high frequency. Both types provide clean AC ...

[Request Quote](#)





Contact Us

For catalog requests, pricing, or partnerships, please visit:

<https://www.energyinnovationday.pl>

Phone: +48 22 335 1273

Email: info@energyinnovationday.pl

Scan the QR code to contact us via WhatsApp.

