



Power consumption of solar base stations





Overview

Estimates the energy production and cost of energy of grid-connected photovoltaic (PV) energy systems throughout the world. It allows homeowners, small building owners, installers and manufacturers to easily develop estimates of the performance of potential PV installations.

Estimates the energy production and cost of energy of grid-connected photovoltaic (PV) energy systems throughout the world. It allows homeowners, small building owners, installers and manufacturers to easily develop estimates of the performance of potential PV installations.

The widespread installation of 5G base stations has caused a notable surge in energy consumption, and a situation that conflicts with the aim of attaining carbon neutrality. Numerous studies have affirmed that the incorporation of distributed photovoltaic (PV) and energy storage systems (ESS) is an.

Abstract—One of the major issues in the deployment of solar powered base stations (BSs) is to dimension the photovoltaic (PV) panel and battery size resources, while satisfying outage constraints with least cost. The fundamental step in this dimensioning is to evaluate the power outage probability.

Solar-powered base stations are a promising approach to sustainable telecommunications infrastructure. However, the successful deployment of solar-powered base stations requires precise prediction of the energy harvested by photovoltaic (PV) panels vs. anticipated energy expenditure in order to.

Powering a 5G outdoor base station cabinet, a solar microgrid, or an industrial power node, the energy cabinet integrates power conversion, energy storage, and intelligent management within one rugged enclosure. But what's inside, and how does it get your system online regardless of the weather?

Growing Demand for Power - The Role of Substations In today's rapidly developing world, electricity demand is increasing at an unprecedented pace. Power generation plants — whether hydroelectric, thermal, or nuclear — are often located far from the main load centers due to geographical and resource.



Estimates the energy production of grid-connected photovoltaic (PV) energy systems throughout the world. It allows homeowners, small building owners, installers and manufacturers to easily develop estimates of the performance of potential PV installations. Operated by the Alliance for Sustainable.



Power consumption of solar base stations



Base Station , SolarInfo

How Solar Energy Systems are Revolutionizing Communication Base Stations? Energy consumption is a big issue in the operation of communication base stations, especially ...

[Request Quote](#)

[Provisioning for Solar-Powered Base Stations Driven by ...](#)

Then, incorporating scenarios that closely mirror the energy consumption patterns of macro 5G base stations and a given tolerable power outage rate, we simulated the number ...

[Request Quote](#)



Details of the power consumption for an LTE-macro base station ...

A power consumption model of LTE Macro BS based on the actual coverage radius of base stations was presented in [34] to address the feasibility of a solar power system to provide the

[Request Quote](#)



[Extract Value from Array in Power Automate](#)

Extract Value from Array in Power Automate Asked 1 year, 2 months ago Modified 9 months ago Viewed 6k times

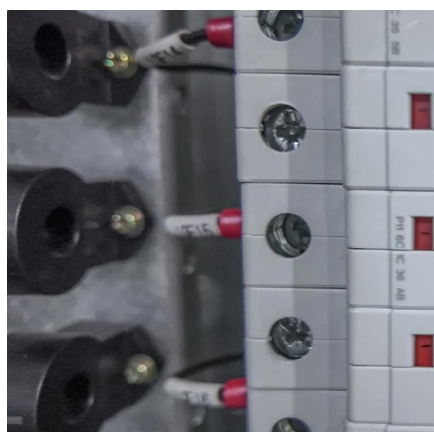
[Request Quote](#)



How to use Power Automate flows to manage user access to ...

Send an HTTP request to SharePoint action in Power automate flows works with SharePoint REST APIs. Follow below Microsoft official documentations for SharePoint REST ...

[Request Quote](#)



How do I refresh an Excel Power Query using Power Automate ...

0 I have data being pulled from a SharePoint list to an Excel file and I'm trying to use Power Automate online to create a scheduled flow that will trigger the "Refresh All" button ...

[Request Quote](#)



Details of the power consumption for an LTE ...

A power consumption model of LTE Macro BS based on the actual coverage radius of base stations was presented in [34] to address the feasibility of a ...

[Request Quote](#)



Energy performance of off-grid green



[cellular base stations](#)

Therefore, this paper develops a diffusion-based modelling framework for solar-powered green off-grid base station sites. We apply this framework to evaluate the energy ...

[Request Quote](#)



[Power Outage Estimation and Resource Dimensioning for ...](#)

The proposed model accounts for hourly as well as daily variation in the harvested solar energy as well as the load dependent BS power consumption. The model evaluates the steady state ...

[Request Quote](#)

PVWatts Calculator

NREL's PVWatts ® Calculator Estimates the energy production of grid-connected photovoltaic (PV) energy systems throughout the world. It allows homeowners, small building owners, ...

[Request Quote](#)



Data Source Credentials and Scheduled Refresh greyed out in ...

Data Source Credentials and Scheduled Refresh greyed out in Power BI Service Asked 4 years, 8 months ago Modified 3 years, 4 months ago Viewed 18k times

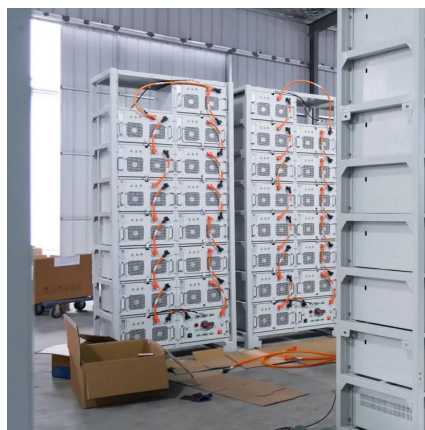
[Request Quote](#)

power automate



0 Creating a flow in Power Automate: New Step
Choose the OneDrive "Get file content" action File
= /Documents/Folder/File.json Infer Content Type
= Yes New Step Choose ...

[Request Quote](#)



[Improved Model of Base Station Power System for the Optimal](#)

Integrating distributed PV with base stations can not only reduce the energy demand of the base station on the power grid and decrease carbon emissions, but also ...

[Request Quote](#)

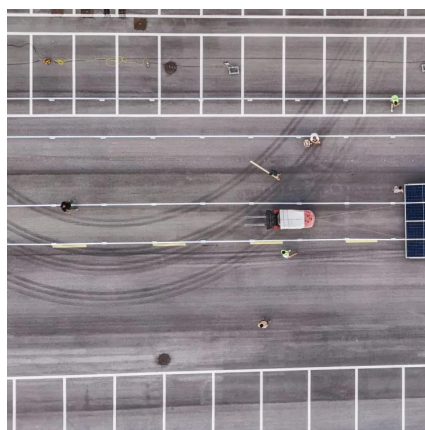


Power Automate

powerbi

I have a table PRODUCTS in Power BI that has a column named Product_Group. When I go to transform data I can see all the Product groups. (DirectQuery connection, it is ...

[Request Quote](#)



powerbi

In Power Automate, within the Power BI connector, you'll find the "Run a query against a dataset" action. Take note: this can only return one table at a time with max of 1,000 ...

[Request Quote](#)



I have created a Flow in Power automate, have used a Refresh a Power BI dataset component, there is no issue in terms of functionality as such and I am able to refresh ...

[Request Quote](#)



[How to solve the network error when using a patch function?](#)

Below are some of the reasons you get the network error when using a patch function in Microsoft Power Apps applications: One of the columns in your SharePoint list is ...

[Request Quote](#)

[Power Consumption Assessment of Telecommunication Base ...](#)

The simulations indicate that construction materials and methods influence the energy efficiency of base stations, while ventilation and photo-voltaics can reduce consumption.

[Request Quote](#)



[A Sustainable Approach to Reduce Power Consumption and](#)

Base stations are the most energy-intensive part of a cellular network. In a cellular mobile network, it consumes around 57% of the total consumed energy. Operational ...

[Request Quote](#)

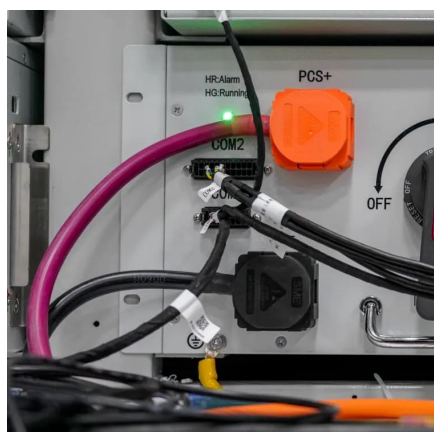


base station power consumption



EverExceed's Telecom Base Station Stacked Solar Power System provides an innovative solution by integrating solar generation with traditional grid power--helping operators achieve stable, ...

[Request Quote](#)



Power Consumption Assessment of Telecommunication Base Stations

The simulations indicate that construction materials and methods influence the energy efficiency of base stations, while ventilation and photo-voltaics can reduce consumption.

[Request Quote](#)

Running Python scripts in Microsoft Power Automate Cloud

I use Power Automate to collect responses from a Form and send emails based on the responses. The main objective is to automate decision-making using Python to approve or ...

[Request Quote](#)





Contact Us

For catalog requests, pricing, or partnerships, please visit:

<https://www.energyinnovationday.pl>

Phone: +48 22 335 1273

Email: info@energyinnovationday.pl

Scan the QR code to contact us via WhatsApp.

