



Point-to-point communication between base station and terminal





Overview

In , a point-to-point connection is a communications connection between two or . An example is a , in which one telephone is connected with one other, and what is said by one caller can only be heard by the other. This is contrasted with a or connection, in which many nodes can receive information transmitted by one node. Other examples of point-to-point communications links are

Point-to-point communication is a fundamental concept in telecommunications, enabling direct connections between two communication endpoints or nodes. In this article, we delve into the intricacies of point-to-point communication, exploring its applications, workings, benefits, and.

Point-to-point communication is a fundamental concept in telecommunications, enabling direct connections between two communication endpoints or nodes. In this article, we delve into the intricacies of point-to-point communication, exploring its applications, workings, benefits, and.

Point-to-point communication is a fundamental concept in telecommunications, enabling direct connections between two communication endpoints or nodes. In this article, we delve into the intricacies of point-to-point communication, exploring its applications, workings, benefits, and examples.

the present invention relates to an Internet communication method using a mobile communication terminal, and more particularly to a method for performing point-to-point protocol (PPP) setup according to an initial Internet protocol (IP) address assignment process so that the mobile communication.

One of the most common types of WAN connections, especially in long-distance communications, is a point-to-point connection, also called a serial or leased line connection. Because these connections are typically provided by a carrier, such as a telephone company, boundaries between what is managed.

In telecommunications, a point-to-point connection is a communications connection between two communication endpoints or nodes. An example is a telephone call, in which one telephone is connected with one other, and what is said by one caller can only be heard by the other. This is contrasted with.

Point-to-Point Communication in Distributed Systems explains how different parts of a computer network talk to each other directly. It discusses methods and



protocols used for sending messages from one specific point to another, ensuring reliable and efficient communication. It covers challenges.

They can often be used to provide fixed communication links between stations in a network supporting different services (such as mobile communications): supporting applications such as 'infrastructure' or 'wireless transport' networks. Point-to-point (PP) links are typically used for Radio Access.



Point-to-point communication between base station and terminal



[Point-to-Point Communication in Distributed Systems](#)

Point-to-point communication is essential in distributed systems for ensuring direct, reliable, and efficient data transfer between ...

[Request Quote](#)

Point-to-Point Connections

A point-to-point link can connect two geographically distant sites, such as a corporate office in New York and a regional office in London. For a point-to-point line, the carrier dedicates ...

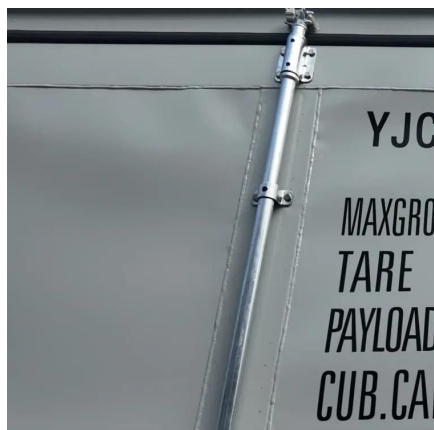
[Request Quote](#)



[Point-to-Point Communication Protocols Explained](#)

Electronic point-to-point communication protocols are methods used to establish direct communication between two electronic devices or systems. These protocols facilitate ...

[Request Quote](#)



US20050144260A1

The mobile communication terminal sets an IP address through the IP address assignment frame, and re-transmits the IP address assignment frame to the base station.

[Request Quote](#)



Cellular systems: multiple access and interference management

multiple access and interference management 4.1 Introduction In Chapter 3, our focus was on point-to-point communication, i.e. the scenario of a single .

[Request Quote](#)



[Point to Point Communication Comprehensive Guide](#)

Point-to-point communication is a fundamental concept in telecommunications, enabling direct connections between two communication endpoints or nodes. In this article, we ...

[Request Quote](#)



Point-to-Point Connections

ObjectivesSerial Point-to-Point Overview (3.1)Serial Communications (3.1.1)Serial and Parallel Ports (3.1.1.1)Point-to-Point Communication Links (3.1.1.3)Time-Division Multiplexing (3.1.1.4)TDMDemarcation Point (3.1.1.7)DTE-DCE (3.1.1.8)HDLC Encapsulation (3.1.2)HDLC Frame Types (3.1.2.3)AddressDataFrame Check Sequence (FCS)Configuring HDLC Encapsulation (3.1.2.4)Step 1.PPP Operation (3.2)Benefits of PPP (3.2.1)LCP and NCP (3.2.2)PPP - Link Control Protocol (LCP) (3.2.2.2)PPP Sessions (3.2.3)LCP





Operation (3.2.3.2)NCP Explained (3.2.3.5)NCP ProcessConfigure PPP (3.3)Configure PPP (3.3.1)PPP Configuration Options (3.3.1.1)PPP Basic Configuration Command (3.3.1.2)PPP Authentication (3.3.2)Configuring PPP Authentication (3.3.2.5)Configuring PPP with Authentication (3.3.2.6)Troubleshoot WAN Connectivity (3.4)Troubleshoot PPP (3.4.1)Troubleshooting PPP Serial Encapsulation (3.4.1.1)Troubleshooting a PPP Configuration with Authentication (3.4.1.3)ActivityUpon completion of this chapter What are the fundamentals of point-to-point serial communications across a WAN? How do you configure HDLC encapsulation on a point-to-point serial link? What are the benefits of using PPP over HDLC in a WAN? What is the PPP layered architecture and the functions of LCP and NCP? How is a PPP session established? Ho...See more on ptgmedia.pearsoncmg Wikipedia

Point-to-point (telecommunications) - Wikipedia

OverviewBasic data linkModern linksNetworkingNotes

In telecommunications, a point-to-point connection is a communications connection between two communication endpoints or nodes. An example is a telephone call, in which one telephone is connected with one other, and what is said by one caller can only be heard by the other. This is contrasted with a point-to-multipoint or broadcast connection, in which many nodes can receive information transmitted by one node. Other examples of point-to-point communications links are

[Request Quote](#)



Point-to-Point (Networking)

The connection between a satellite and a ground station is point-to-point, with signals transmitted directly between these two points, ...

[Request Quote](#)



Point-to-Point (Networking)

The connection between a satellite and a ground station is point-to-point, with signals transmitted directly between these two points, crucial for broadcasting and ...

[Request Quote](#)

[Point-to-Point Communication in Distributed Systems](#)

Point-to-point communication is essential in distributed systems for ensuring direct, reliable, and efficient data transfer between specific nodes. This communication method ...

[Request Quote](#)



[Point-to-Point Communication Protocols Explained](#)

Electronic point-to-point communication protocols are methods used to establish direct communication between two electronic devices or ...

[Request Quote](#)

Point-to-point (telecommunications)

In telecommunications, a point-to-point connection is a communications connection between two communication endpoints or nodes. An example is a telephone call, in which one telephone is ...

[Request Quote](#)



Point-to-Point: model of direct



connections in network and ...

Point-to-Point (point-point) is a connection or communication model in which communication is established directly between two endpoints without intermediate nodes or intermediaries.

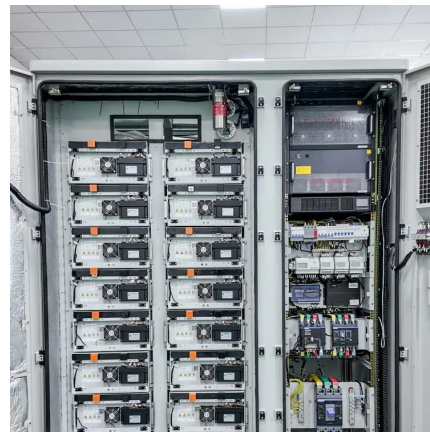
[Request Quote](#)



ETSI

A point to multipoint network topology provides a communication route (on a single radio channel for each sector) from one central point to a number of terminals where users are located. Each ...

[Request Quote](#)





Contact Us

For catalog requests, pricing, or partnerships, please visit:

<https://www.energyinnovationday.pl>

Phone: +48 22 335 1273

Email: info@energyinnovationday.pl

Scan the QR code to contact us via WhatsApp.

