



Outdoor Power Volume





Overview

For most residential outdoor spaces, a speaker wattage between 50–200 watts per speaker is ideal. Small patios or balconies: 50–75 watts, sufficient for intimate gatherings and low ambient noise. Medium decks or garden areas: 75–100 watts, providing clear sound throughout medium-sized.

For most residential outdoor spaces, a speaker wattage between 50–200 watts per speaker is ideal. Small patios or balconies: 50–75 watts, sufficient for intimate gatherings and low ambient noise. Medium decks or garden areas: 75–100 watts, providing clear sound throughout medium-sized.

Outdoor living spaces have become an integral part of modern homes, offering a seamless transition between indoor and outdoor living. And what's an outdoor living space without music?

Installing an outdoor speaker system can elevate the ambiance, create a festive atmosphere, and make outdoor.

Outdoor speakers are built to withstand sun, rain, and wind. They come in various shapes and sizes, from discreet rock speakers that blend into your landscaping to more visible bookshelf-style units. The key is to choose speakers that are weather-resistant and have an impedance (measured in ohms).

Our volume controls are essential additions to whole house audio systems, offering convenient and simplified technology to adjust the volume in different rooms. Our indoor volume controls are designed to seamlessly blend into any decor with stylish decora faceplates and the option of rotary dial.

OUTDOOR: The OVC100 is weatherproof, ideal for outdoor decks, patios, and pool areas. It can withstand extreme temperatures and unknown outdoor conditions like rain, snow and heat. **VOLUME CONTROL:** The knob allows you to adjust the volume up and down. It doesn't add more volume than the master.

Setting the right volume control for your outdoor speakers is crucial to creating the perfect audio experience in your outdoor space. Whether you're hosting a party, enjoying a relaxing afternoon in your backyard, or simply wanting to enhance the overall ambiance, having control over the volume is.



Thicker gauge wires, such as 16 or 14 AWG (American Wire Gauge), are commonly recommended for outdoor speaker installations to mitigate power loss and ensure optimal sound reproduction. Moreover, when planning the wiring layout for outdoor speakers, it's vital to consider the path of the speaker.



Outdoor Power Volume



How to Wire Outdoor Speakers with Volume Control: A Complete ...

You've successfully navigated the path to wiring outdoor speakers with volume control. It's more than just a technical feat; it's about enhancing your enjoyment of the spaces ...

[Request Quote](#)

Volume Controls

Enhance your whole house audio system with our versatile volume controls. Choose from indoor volume controls with sleek designs and adjustable ...

[Request Quote](#)



Volume Controls

Enhance your whole house audio system with our versatile volume controls. Choose from indoor volume controls with sleek designs and adjustable knobs or sliders, and outdoor volume ...

[Request Quote](#)

[What is a Good Wattage for Outdoor Speakers? Expert Guide](#)

Discover the ideal wattage for outdoor speakers, factors affecting volume and clarity, and how to choose speakers for patios, decks, and large outdoor spaces.



[Request Quote](#)



OSD Audio Outdoor 100W Volume Control Impedance Matching, ...

OUTDOOR: The OVC100 is weatherproof, ideal for outdoor decks, patios, and pool areas. It can withstand extreme temperatures and unknown outdoor conditions like rain, snow and heat.
VOLUME ...

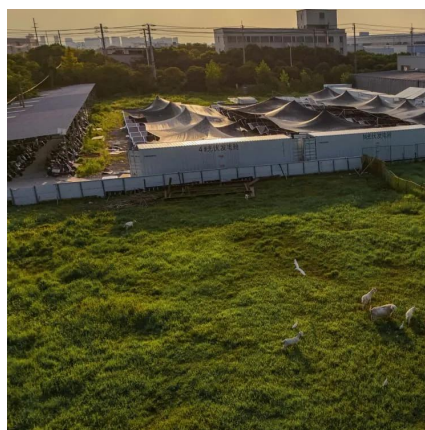
[Request Quote](#)



OSD Audio Outdoor 100W Volume Control Impedance Matching, ...

OUTDOOR: The OVC100 is weatherproof, ideal for outdoor decks, patios, and pool areas. It can withstand extreme temperatures and unknown outdoor conditions like rain, snow ...

[Request Quote](#)



Your Essential Guide to Portable Power Stations for Outdoor ...

This comprehensive guide equips you with everything you need to electrify your outdoor gatherings, from calculating precise power needs to choosing the ideal power station and ...

[Request Quote](#)



[How to Get Great Sound in Your Backyard](#)



[Wirecutter](#)

Passive Outdoor Speakers
Active Outdoor Speakers with Bluetooth
Portable Outdoor Wi-Fi Speakers
Portable Bluetooth Speakers
These speakers--referred to as passive because they need to be connected to an amplifier--are similar to traditional bookshelf speakers, and they usually deliver better sound quality and more volume than most wireless outdoor speakers. They're typically sold in pairs, and each speaker is usually a two-way design with a woofer for the bass and a tweet
See more on nytimes



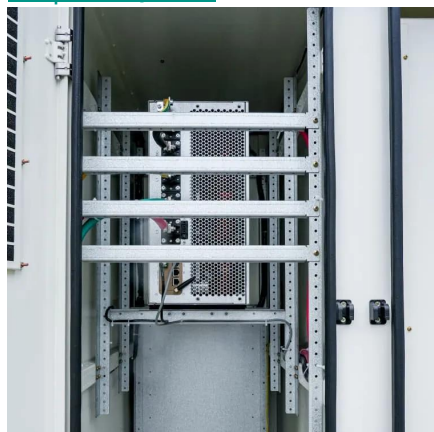
Searches you might like

outdoor vitals
powered outdoor speakers
outbound power
outdoor ups
autoctrls

A Step-by-Step Guide: Outdoor Speaker Volume ...

Learn how to wire an outdoor speaker volume control with this helpful diagram. Control the volume of your outdoor speakers for a customizable ...

[Request Quote](#)



[OSD OVC300 \(Grey\) 300-watt outdoor volume ...](#)

It handles up to eight pairs of speakers and up to 300 watts of power. ...

[Request Quote](#)

A Step-by-Step Guide: Outdoor Speaker Volume Control Wiring ...

Learn how to wire an outdoor speaker volume control with this helpful diagram. Control the volume of your outdoor speakers for a customizable listening experience.

[Request Quote](#)



How To Wire Outdoor Speakers With Volume Control , Storables

Learn how to wire outdoor speakers with volume control for your outdoor furniture. Get expert tips on outdoor furniture, furniture, and design. Discover the best practices for ...

[Request Quote](#)

[How to Get Great Sound in Your Backyard . Wirecutter](#)

In the brand-concealed tests we've conducted for our guide to the best outdoor speakers, we've found several good-sounding options at affordable prices.

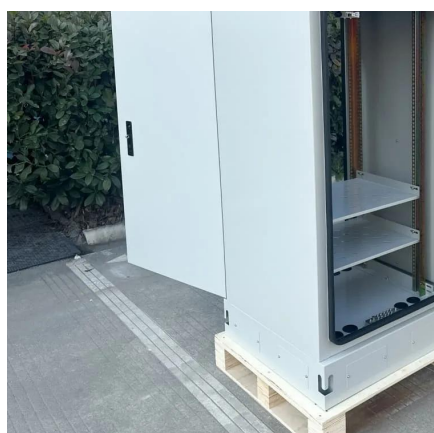
[Request Quote](#)



[Voice of Freedom: How to Wire Outdoor Volume Control for ...](#)

With an outdoor volume control, you can set the perfect volume level for your outdoor gathering or party, ensuring that your guests can enjoy the music without it being too ...

[Request Quote](#)



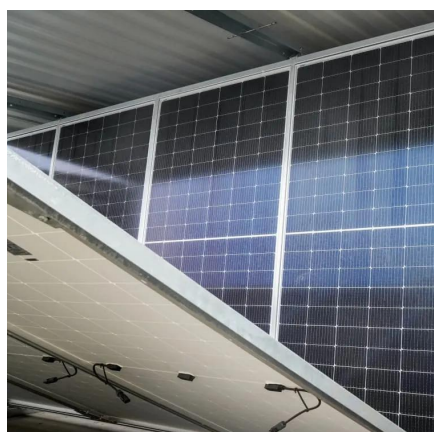
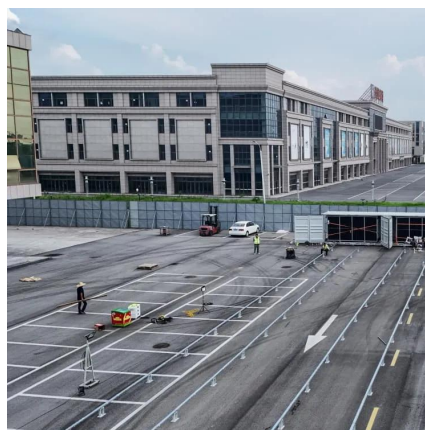
OSD OVC300 (Grey) 300-watt outdoor



volume control at Crutchfield

It handles up to eight pairs of speakers and up to 300 watts of power. There's an easy-to-access impedance switch you can adjust to to ensure a safe load for your amplifier. This rugged ...

[Request Quote](#)



[How To Wire Outdoor Speakers With Volume ...](#)

Learn how to wire outdoor speakers with volume control for your outdoor furniture. Get expert tips on outdoor furniture, furniture, and ...

[Request Quote](#)



Contact Us

For catalog requests, pricing, or partnerships, please visit:

<https://www.energyinnovationday.pl>

Phone: +48 22 335 1273

Email: info@energyinnovationday.pl

Scan the QR code to contact us via WhatsApp.

