



Nuku alofa communication wind power base station price inquiry





Overview

The project is expected to begin its planning and construction in the upcoming months and begin operations in May 2020. [pdf] \$280 - \$580 per kWh (installed cost), though of course this will vary from region to region depending on economic levels.

The project is expected to begin its planning and construction in the upcoming months and begin operations in May 2020. [pdf] \$280 - \$580 per kWh (installed cost), though of course this will vary from region to region depending on economic levels.

This data can AIMS Energy Volume 5, Issue 1, 96-112. be extrapolated to the designated wind turbine height of 30 m. Tables 2 summarize the monthly wind [pdf] [FAQS about Remote communication base station wind power network] Due to the widespread installation of Base Stations, the power consumption.

Major projects now deploy clusters of 20+ containers creating storage farms with 100+MWh capacity at costs below \$280/kWh. Technological advancements are dramatically improving solar storage container performance while reducing costs. Next-generation thermal management systems maintain optimal.

The estimated costs and benefits of the project components were converted to their economic prices using the domestic price numeraire, which adjusts traded inputs valued at border prices to equivalent domestic values, using a shadow exchange rate factor of 1.04.4 As there is high underemployment of.

Tonga Power Limited invites interested parties trenching contract with network upgrading project, Nuku'alofa (NNUP). For more information can click on the RFQ listed within the table below. NO. 1. 09 May 2025 at 10am at Matatoa, TPL office. Malo Finau Fonua Project Manager - NNUP | Tonga Power Ltd .

The \$33 Billion Question: Storage or Stagnation?

Global energy storage markets hit \$33 billion last year [2], but island nations often get priced out. Wait, no - actually, recent data suggests tiered solutions could work. Consider these pain points: When Huijue Group engineers quote projects, we.



Please note: In many cases, the station position in our database is accurate to only one minute. Thus, the tide gauge may not appear to be on the coast. [Link to larger image of monthly data plot.](#) [Download monthly mean sea level data.](#) [Link to larger image of annual data plot.](#) [Download annual mean.](#)



Nuku alofa communication wind power base station price inquiry



[Nuku'alofa Energy Storage Power Station: Key Factors ...](#)

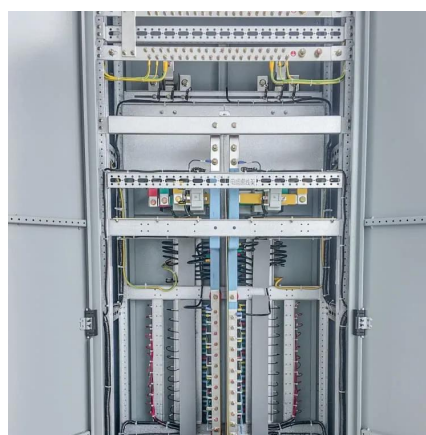
Getting Nuku'alofa's quote right isn't about cheapest hardware - it's engineering resilience into every kilowatt-hour. Because when the next cyclone hits, that storage system isn't just ...

[Request Quote](#)

[Pacific Renewable Energy Investment Facility: Nuku'alofa ...](#)

The project will convert the distribution network of the Nuku'alofa with climate resilient infrastructure.

[Request Quote](#)



writing style

8 CyberDefinitions gives a plausible explanation: Although its origin is contested, w/ has been used at least since the rise of the fast-food industry in the 1950s. As a form of ...

[Request Quote](#)

Are W and Y vowels?

Vowels are always voiced, and have no attack of their own. So, by this definition, yes, "y" and "w" can represent vowel sounds in words. Usually, when they do represent vowels, they are used ...

[Request Quote](#)



[NUKU ALOFA ENERGY STORAGE POWER STATION QUOTE](#)

This paper analyzes the concept of a decentralized power system based on wind energy and a pumped hydro storage system in a tall building. The system reacts to the current paradigm of ...

[Request Quote](#)



[Nuku alofa Network Upgrade Project: Economic Analysis](#)

The Nuku'alofa Network Upgrade Project aims to improve climate resilience (particularly cyclone resilience), reduce network losses, and improve the safety and reliability of the electricity ...

[Request Quote](#)



[Pronunciation of w at the end of a word](#)

/w/ represents a consonant (a bilabial approximant); /?/ is a vowel. They may be similar in realisation but they're different sounds and phonologically different (e.g. /?/ can occur ...

[Request Quote](#)



How can I differentiate between the



pronunciation of "w" and "v"?

In English, /w/ is a complex consonant with secondary articulation. Notice how its pronunciation starts with the proximal part of the tongue almost touching the soft palate and then moves ...

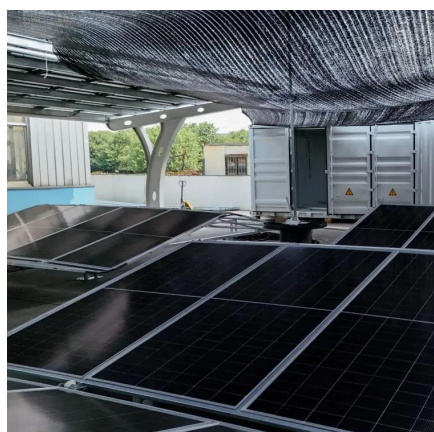
[Request Quote](#)



Is there a common abbreviation for "with or without"? e.g. w/wo or ...

6 Is there a common abbreviation for "with or without"? e.g. w/wo or w/w/o Obviously, something this complex is best written in full form, but I'm looking for something to use in space ...

[Request Quote](#)



What does "w/" mean?

The shorthand w/ is used to mean with. 2 pieces toast w/ gravy Is a shorter way of writing "Two pieces of toast with gravy." The B strings tuned w/ low E 7th fret harmonic- (6th ...

[Request Quote](#)



[Nuku'alofa Network Upgrade Project , Tonga ...](#)

NNUP will help to reduce network losses, increase access to electricity, provide safe and reliable electricity supply to approximately 8,472 ...

[Request Quote](#)



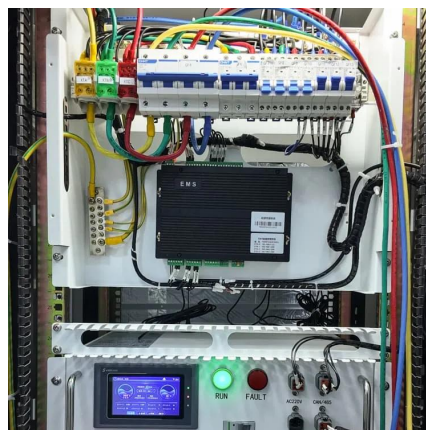
[Nuku'alofa Network Upgrade Project ,](#)



Tonga Power Limited

NNUP will help to reduce network losses, increase access to electricity, provide safe and reliable electricity supply to approximately 8,472 households and businesses in the greater Nuku'alofa ...

[Request Quote](#)



pronunciation vs spelling

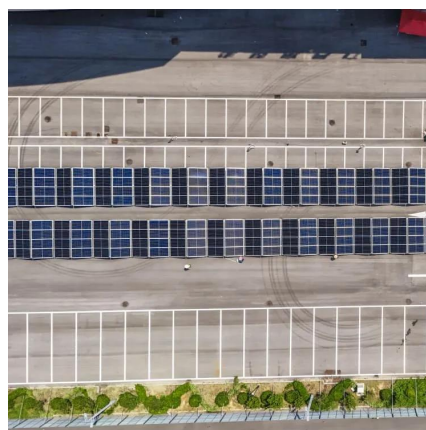
The odd aesc (æ) and ethel (œ) that once appeared in fairly common words have been dropped in the last century, and 'AmE' spellings have become invasive in the UK. //// ...

[Request Quote](#)

NUKU ALOFA COMMUNICATION BASE STATION LITHIUM

Can solar and wind provide reliable power supply in remote areas? Solar and wind are available freely and thus appears to be a promising technology to provide reliable power supply in the ...

[Request Quote](#)



Are "w/o", "w/", "b/c" common abbreviations in the US?

I have seen w/o, b/c, and w/ in US contexts in non-formal writing (especially email and business memos).

[Request Quote](#)

Usage of the abbreviations "w/" and "w/o"



[in presentations](#)

I like to use the abbreviations "w/" for "with" and "w/o" for "without" on my powerpoint slides and also in emails. According to this discussion Are "w/o", "w/", "b/c" common abbreviations in the ...

[Request Quote](#)



[NUKU ALOFA BASE STATION ENERGY STORAGE BATTERY ...](#)

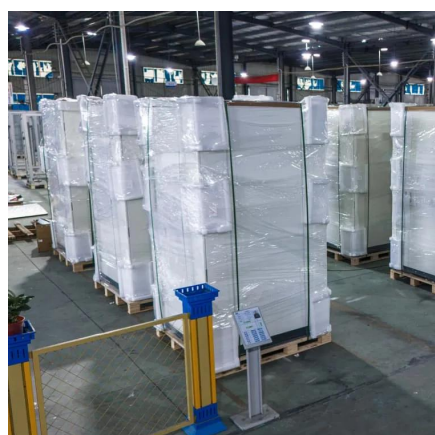
Battery energy storage power station unit cost \$280 - \$580 per kWh (installed cost), though of course this will vary from region to region depending on economic levels.

[Request Quote](#)

[Nuku'alofa Network Upgrade Project Annoucement](#)

Tonga Power Limited invites interested parties trenching contract with network upgrading project, Nuku'alofa (NNUP). For more information can click on the RFQ listed within the table below.

[Request Quote](#)



[What is the use of "w" as Semi-vowel?](#)

The function of the 'y' and 'w' in Yell and Well are not in any material sense different to the leading consonants in Tell, Sell, and Fell. The inclusion of 'y' as a semi-vowel in ...

[Request Quote](#)

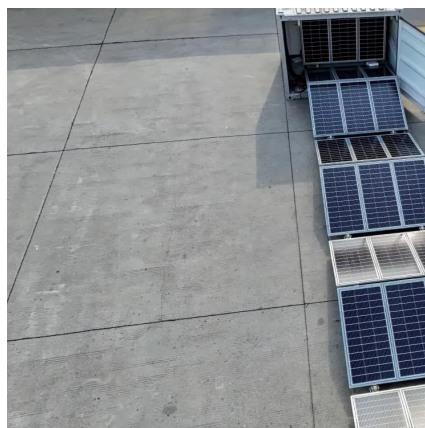
[NUKU ALOFA COMMUNICATION BASE](#)



STATION LITHIUM ...

Communication base station battery bms As a telecommunication management system, BMS ensures stable and continuous power supply for base stations during high-load operations by ...

[Request Quote](#)



Data and Station Information for NUKU'ALOFA B

Please note: In many cases, the station position in our database is accurate to only one minute. Thus, the tide gauge may not appear to be on the coast.

[Request Quote](#)

NUKU ALOFA COMMUNICATION BASE STATION LITHIUM

Can solar and wind provide reliable power supply in remote areas? Solar and wind are available freely and thus appears to be a promising technology to provide reliable power supply in the ...

[Request Quote](#)





Contact Us

For catalog requests, pricing, or partnerships, please visit:

<https://www.energyinnovationday.pl>

Phone: +48 22 335 1273

Email: info@energyinnovationday.pl

Scan the QR code to contact us via WhatsApp.

