



Monitoring Uninterruptible Power Supply Asset Class





Overview

The table below lists the attributes that are applicable to this Element Type, along with the data profile requirements for each attribute and details of when and how each should be used and delivered.

The table below lists the attributes that are applicable to this Element Type, along with the data profile requirements for each attribute and details of when and how each should be used and delivered.

The CIM_UninterruptiblePowerSupply class represents the capabilities and management of an uninterruptible power supply (UPS). The properties of the UPS device indicate when incoming power is trimmed or boosted, and the aggregated information of the batteries, generators, and so on, that make up the.

This handbook is your one-stop source for essential information . whether you need power protection for small, medium or large data centers; health care facilities; or other environments in which ensuring uptime and safeguarding data are critical. Why do you need a UPS?

In general, a UPS protects.

The Redfish Power Supply sensor monitors the power supply of a Redfish Scalable Platforms Management API (Redfish)-capable server. It can show the following: The EXE/Script Advanced sensor runs an executable file (.exe) or a script (batch file, VBScript, PowerShell) on the probe system. This option.

Monitor the availability, health, and performance of your uninterruptible power supply (UPS) devices from different vendors, and ensure uninterrupted uptime for your network right from the cloud using our UPS monitoring tool. What is UPS monitoring?

UPS monitoring is the process of monitoring the.

To prevent downtime of your networking equipment, you'll need an uninterruptible power supply (UPS). An uninterruptible power supply system is a source of backup power that almost immediately activates when the main power source fails. It should supply power within 25ms and sustain sensitive.



ABB has launched a unique way to remotely monitor UPS systems, further expanding its ecosystem of digital tools for smart power supplies and sustainable energy management. The ABB Ability™ SmartTracker provides 24-7 remote monitoring of critical uninterruptible power supply (UPS) systems and gives.



Monitoring Uninterruptible Power Supply Asset Class



Uninterruptible Power Supply

Asset Categories Buildings and Compounds:
Maintenance Building Uninterruptible Power Supply

[Request Quote](#)

[New ABB Ability\(TM\) SmartTracker enables users to ...](#)

The ABB Ability(TM) SmartTracker provides 24-7 remote monitoring of critical uninterruptible power supply (UPS) systems and ...

[Request Quote](#)



[Uninterruptible Power Supply Monitoring Guide](#)

Maintaining power supply for long enough to ensure uninterrupted service can actually save lives. For this reason, a reliable and high-capacity UPS is necessary for your ...

[Request Quote](#)

KEEP POWER UNCRITICAL

Its aim is to introduce core sector themes, technologies and product considerations around Uninterruptible Power Supply (UPS).

[Request Quote](#)



UPS Monitoring: Site24x7

Monitor the availability, health, and performance of your uninterruptible power supply (UPS) devices from different vendors, and ensure uninterrupted uptime for your network right from ...

[Request Quote](#)



UPS Monitoring , PRTG

Use PRTG's historical monitoring data to analyze power capacity and resources, and report to your management on how to optimize your power supply system based on facts, not ...

[Request Quote](#)



[UPS Power Monitoring Software , Site Sentry by ...](#)

Site Sentry, developed by DC Group, is an advanced UPS power monitoring software that ensures efficient management and monitoring of your power ...

[Request Quote](#)



[Uninterruptible Power Supply Monitoring](#)



[Guide](#)

Maintaining power supply for long enough to ensure uninterrupted service can actually save lives. For this reason, a reliable ...

[Request Quote](#)



[Uninterruptible power supply monitoring](#)

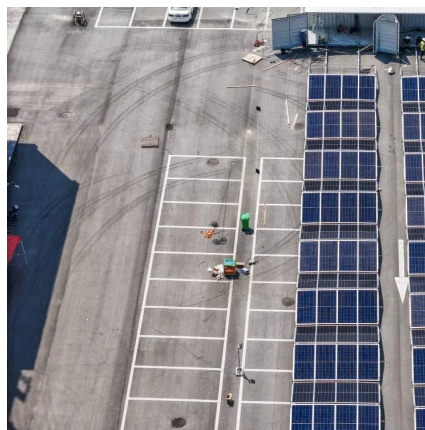
Using a UPS's own interface for uptime monitoring defeats the reason for such monitoring. If the UPS fails, so too will the monitoring interface that ...

[Request Quote](#)

CIM_UninterruptiblePowerSupply class

The CIM_UninterruptiblePowerSupply class represents the capabilities and management of an uninterruptible power supply (UPS).

[Request Quote](#)



[UPS Power Monitoring Software , Site Sentry by DC Group](#)

Site Sentry, developed by DC Group, is an advanced UPS power monitoring software that ensures efficient management and monitoring of your power systems.

[Request Quote](#)

New ABB Ability(TM) SmartTracker



enables users to monitor UPS ...

The ABB Ability(TM) SmartTracker provides 24-7 remote monitoring of critical uninterruptible power supply (UPS) systems and gives users data-driven insights to improve ...

[Request Quote](#)



[Uninterruptible power supply monitoring](#)

Using a UPS's own interface for uptime monitoring defeats the reason for such monitoring. If the UPS fails, so too will the monitoring interface that you have relied on. Instead, the industry's ...

[Request Quote](#)

Eaton UPS fundamentals handbook

Eaton UPS fundamentals handbook. The Eaton UPS and power management. Fundamentals handbook. Handbook. Table of contents. o Introduction. ...

[Request Quote](#)





Contact Us

For catalog requests, pricing, or partnerships, please visit:

<https://www.energyinnovationday.pl>

Phone: +48 22 335 1273

Email: info@energyinnovationday.pl

Scan the QR code to contact us via WhatsApp.

