

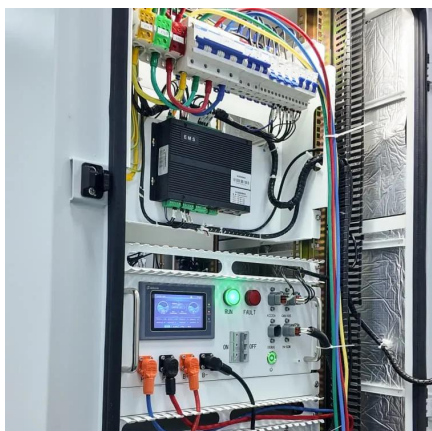


# Mongolia Energy Storage Container Quote





## Mongolia Energy Storage Container Quote



### Mongolia

It has a border with Russia to the north and the People's Republic of China to the south and southeast. Mongolia's political system is a parliamentary republic. Mongolia is the biggest ...

[Request Quote](#)

### About Mongolia , Mongolia in brief , Information for travelers

All about Mongolia. Here you will find information about Mongolian geography, history, culture, heritage, hospitality, food and drinks, people and nomads, public holidays and main events, ...

[Request Quote](#)



### Mongolia

Mongolia (Mongolian: ?????? ???) is a landlocked country located in East Asia with a population of nearly three million. Mongolia is also sometimes classified as being a part of Central Asia, ...

[Request Quote](#)



### Mongolia

There are no photos for Mongolia. Visit the Definitions and Notes page to view a description of each topic.

[Request Quote](#)



## Mongolia

Ulaanbaatar is the capital of Mongolia. It's in the Tuul River valley, bordering the Bogd Khan Uul National Park. Originally a nomadic Buddhist center, it became a permanent site in the 18th ...

[Request Quote](#)

## Mongolia

With a population of 3.5 million, it is the world's most sparsely populated sovereign state, excluding partially unrecognized Western Sahara. The country constitutes a significant portion ...

[Request Quote](#)



## [Mongolia , Culture, Facts & Travel ,](#)

Mongolia is a large and sparsely populated country landlocked between China and Russia. Mongolia is the 6th largest country in Asia and 18th largest in the world. The capital, ...

[Request Quote](#)



## About Mongolia - explore mongolia



Mongolia, the heart of Asia, is a land of vast steppes, rich history, and nomadic culture. With a population of 3.3 million and a territory spanning 1.56 million km<sup>2</sup>, it is one of the world's least ...

[Request Quote](#)



## **Mongolia , History, Capital, Map, Flag, Language, Population, ...**

Mongolia, historically Outer Mongolia, landlocked country located in north-central Asia. It is roughly oval in shape, measuring 1,486 miles (2,392 km) from west to east and, at ...

[Request Quote](#)



## Contact Us

---

For catalog requests, pricing, or partnerships, please visit:

<https://www.energyinnovationday.pl>

Phone: +48 22 335 1273

Email: [info@energyinnovationday.pl](mailto:info@energyinnovationday.pl)

Scan the QR code to contact us via WhatsApp.

