



Mobile communication network base station





Overview

A is a network of handheld (cell phones) in which each phone communicates with the by through a local antenna at a cellular base station (cell site). The coverage area in which service is provided is divided into a mosaic of small geographical areas called "cells", each served by a separate low power multichannel and antenna at a base station. All the cell phones within a cell communicate with the system thr.

Simply put, a base station (BS) is a wireless transceiver device in a mobile communication network that provides wireless coverage and communicates with mobile terminals like your phone. It acts as a bridge, connecting your phone to a vast communication network to ensure smooth.

Simply put, a base station (BS) is a wireless transceiver device in a mobile communication network that provides wireless coverage and communicates with mobile terminals like your phone. It acts as a bridge, connecting your phone to a vast communication network to ensure smooth.

A base station represents an access point for a wireless device to communicate within its coverage area. It usually connects the device to other networks or devices through a dedicated high bandwidth wire of fiber optic connection. Base stations typically have a transceiver, capable of sending and.

A cell site, cell phone tower, cell base tower, or cellular base station is a cellular -enabled mobile device site where antennas and electronic communications equipment are placed (typically on a radio mast, tower, or other raised structure) to create a cell, or adjacent cells, in a cellular.

Base stations play a pivotal role in mobile telecommunications, acting as the nexus between users' cell phones and the broader network infrastructure. Understanding how these stations function is essential for anyone engaged in the field of telecommunications or simply interested in the mechanics.

This article will guide you to a deeper understanding of a base station's composition and working principles, with a special focus on the impact of heat on base station performance and how efficient thermal materials solve this core problem. Definition and Basic Functions of a Base Station What is.

A base station plays a pivotal role in the realm of telecommunications, acting as



the cornerstone of connectivity. It enables seamless communication by linking various wireless devices to broader networks, ensuring that data flows efficiently from one point to another. A base station is an integral.

Base stations and cell towers are critical components of cellular communication systems, serving as the infrastructure that supports seamless mobile connectivity. These structures facilitate the transmission and reception of signals between mobile devices and the wider network, enabling voice.



Mobile communication network base station



Types and Applications of Mobile Communication Base Stations

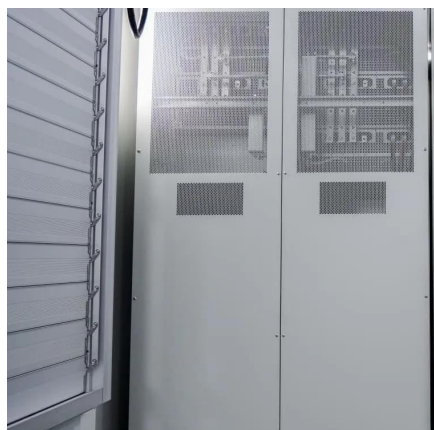
Mobile communication base station is a form of radio station, which refers to a radio transceiver station that transmits information between mobile phone terminals through a ...

[Request Quote](#)

Base transceiver station

A base transceiver station (BTS) or a baseband unit[1] (BBU) is a piece of equipment that facilitates wireless communication between user equipment (UE) and a network.

[Request Quote](#)



Base Stations

Base stations form a key part of modern wireless communication networks because they offer some crucial advantages, such as wide coverage, continuous communications and ...

[Request Quote](#)

[Understanding Base Stations in Mobile ...](#)

A base station is a fixed point that enables wireless communication between mobile devices and the network. These stations consist of radio ...

[Request Quote](#)



[Understanding Base Stations in Mobile Communication](#)

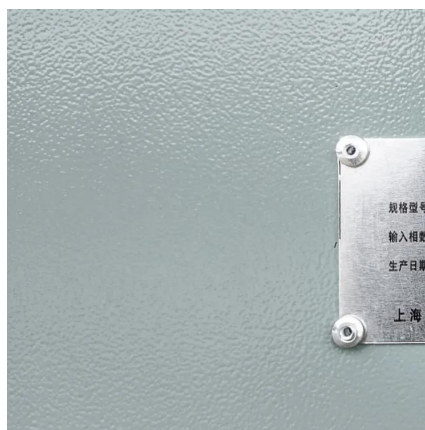
A base station is a fixed point that enables wireless communication between mobile devices and the network. These stations consist of radio transceivers, antennas, and a controller which ...

[Request Quote](#)

What Is A Base Station?

A base station is an integral component of wireless communication networks, serving as a central point that manages the transmission and reception of signals between ...

[Request Quote](#)



What is a base station?

Base stations in cellular telephone networks are more commonly referred to as cell towers. Each cellphone connects to the cell tower, which in turn connects it to the wired public ...

[Request Quote](#)

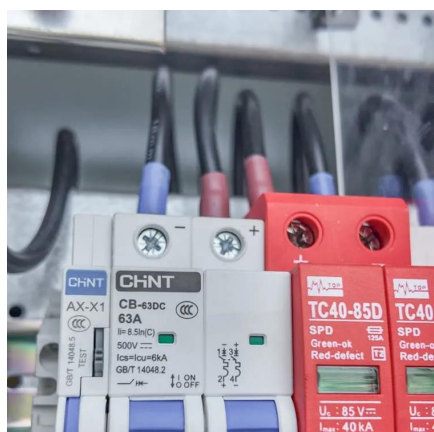
[Types and Applications of Mobile](#)



[Communication ...](#)

Mobile communication base station is a form of radio station, which refers to a radio transceiver station that transmits information ...

[Request Quote](#)



Cell site

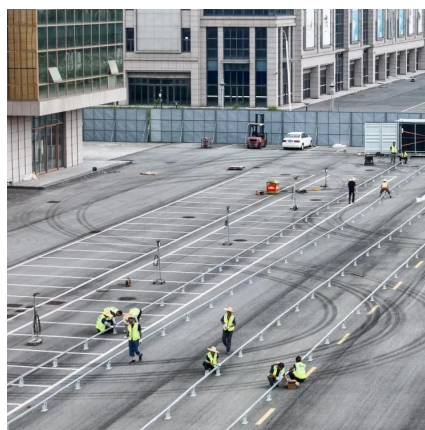
All the cell phones within a cell communicate with the system through that cell's antenna, on separate frequency channels assigned by the base station from a common pool of frequencies ...

[Request Quote](#)

What Is A Base Station?

A base station is an integral component of wireless communication networks, serving as a central point that manages the ...

[Request Quote](#)



What Is a Base Station? Exploring the Core of 5G Networks and ...

Simply put, a base station (BS) is a wireless transceiver device in a mobile communication network that provides wireless coverage and communicates with mobile ...

[Request Quote](#)

Base Stations and Cell Towers: The



Pillars of Mobile Connectivity

Base stations use antennas mounted on cell towers to send and receive radio signals to and from mobile devices within their coverage area. This communication enables ...

[Request Quote](#)



[What Is a Base Station? Exploring the Core of 5G ...](#)

Simply put, a base station (BS) is a wireless transceiver device in a mobile communication network that provides wireless ...

[Request Quote](#)

Cell site

Summary Overview Operation Temporary sites Employment Spy agency setup Off-grid systems Camouflage

A cellular network is a network of handheld mobile phones (cell phones) in which each phone communicates with the telephone network by radio waves through a local antenna at a cellular base station (cell site). The coverage area in which service is provided is divided into a mosaic of small geographical areas called "cells", each served by a separate low power multichannel transceiver and antenna at a base station. All the cell phones within a cell communicate with the system thr...

[Request Quote](#)



[What Is Base Station In Wireless Communication?](#)

A base station, also known as a cell tower or base transceiver station (BTS), is a crucial component



of wireless communication networks. It serves as the central point for ...

[Request Quote](#)





Contact Us

For catalog requests, pricing, or partnerships, please visit:

<https://www.energyinnovationday.pl>

Phone: +48 22 335 1273

Email: info@energyinnovationday.pl

Scan the QR code to contact us via WhatsApp.

