



Mobile base station backup power capacity





Mobile base station backup power capacity



[What Powers Telecom Base Stations During Outages?](#)

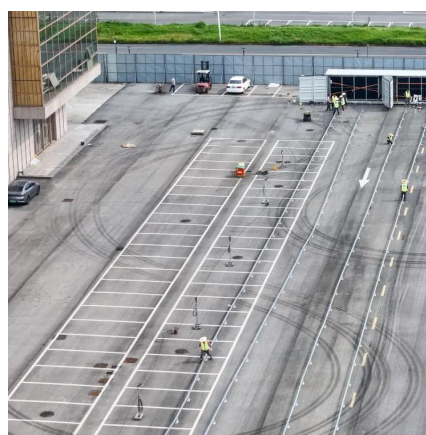
Telecom batteries for base stations are backup power systems using valve-regulated lead-acid (VRLA) or lithium-ion batteries. They ensure uninterrupted connectivity ...

[Request Quote](#)

How to Select the Best ESTEL Battery Backup for Base Stations

Choose the best telecom battery backup systems by evaluating capacity, battery type, environmental adaptability, maintenance, and scalability for base stations.

[Request Quote](#)



Telecom Base Station Backup Power Solution: Design Guide for ...

Discover the 48V 100Ah LiFePO4 battery pack for telecom base stations: safe, long-lasting, and eco-friendly. Optimize reliability with our design guide.

[Request Quote](#)

[Securing Backup Power for Telecom Base Stations ...](#)

This article will explore in detail how to secure backup power for telecom base stations, discussing the components involved, advanced ...

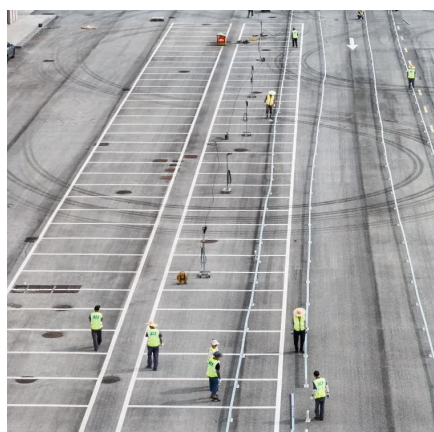
[Request Quote](#)



[Securing Backup Power for Telecom Base Stations - leagend](#)

This article will explore in detail how to secure backup power for telecom base stations, discussing the components involved, advanced technologies, best practices, and ...

[Request Quote](#)



How to Choose the Right Backup Battery for Telecom Base Stations

Choosing the right telecom base station backup battery is a strategic decision that goes beyond upfront cost. Operators must weigh factors such as voltage requirements, cycle ...

[Request Quote](#)



Understanding Backup Battery Requirements for Telecom Base Stations

Telecom base stations require reliable backup power to ensure uninterrupted communication services. Selecting the right backup battery is crucial for network stability and ...

[Request Quote](#)



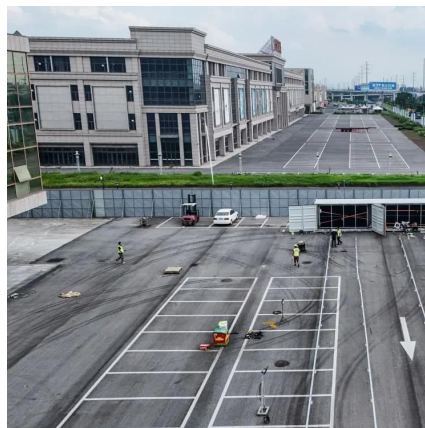
Evaluating the Dispatchable Capacity



of Base Station Backup ...

This paper evaluates the dispatchable capacity of the BS backup batteries in distribution networks and illustrates how it can be utilized in power systems. The BS reliability model is first ...

[Request Quote](#)



[How much battery capacity does the base station use?](#)

The average battery capacity required by a base station ranges from 15 to 50 amp-hours (Ah), depending on the base station's operational demands and the technologies it ...

[Request Quote](#)

Do mobile network base stations still use lead acid for backup power?

Mobile network base stations are generally protected against power loss by batteries. My understanding is that they used to use negative 48V DC power, i.e. 24 2-volt ...

[Request Quote](#)



Evaluating the Dispatchable Capacity of Base Station Backup Batteries

This paper evaluates the dispatchable capacity of the BS backup batteries in distribution networks and illustrates how it can be utilized in power systems. The BS reliability model is first ...

[Request Quote](#)

[Communication Base Station Backup](#)



[Battery](#)

High-capacity energy storage solutions, specifically designed for communication base stations and weather stations, with strong weather resistance to ensure continuous operation of ...

[Request Quote](#)





Contact Us

For catalog requests, pricing, or partnerships, please visit:

<https://www.energyinnovationday.pl>

Phone: +48 22 335 1273

Email: info@energyinnovationday.pl

Scan the QR code to contact us via WhatsApp.

