



Mechanical structure of Huawei s flywheel energy storage





Overview

A typical system consists of a flywheel supported by connected to a . The flywheel and sometimes motor-generator may be enclosed in a to reduce friction and energy loss. First-generation flywheel energy-storage systems use a large flywheel rotating on mechanical bearings. Newer systems use composite

A FESS consists of several key components: (1) A rotor/flywheel for storing the kinetic energy. (2) A bearing system to support the rotor/flywheel. (3) A power converter system for charge and discharge, including an electric machine and power electronics. (4) Other auxiliary.

A FESS consists of several key components: (1) A rotor/flywheel for storing the kinetic energy. (2) A bearing system to support the rotor/flywheel. (3) A power converter system for charge and discharge, including an electric machine and power electronics. (4) Other auxiliary.

Flywheel energy storage stores electrical energy in the form of mechanical energy in a high-speed rotating rotor. The core technology is the rotor material, support bearing, and electromechanical control system. This chapter mainly introduces the main structure of the flywheel energy storage.

Flywheel energy storage (FES) works by spinning a rotor (flywheel) and maintaining the energy in the system as rotational energy. When energy is extracted from the system, the flywheel's rotational speed is reduced as a consequence of the principle of conservation of energy; adding energy to the.

Energy storage flywheel systems are mechanical devices that typically utilize an electrical machine (motor/generator unit) to convert electrical energy in mechanical energy and vice versa. Energy is stored in a fast-rotating mass known as the flywheel rotor. The rotor is subject to high centripetal.

Abstract - This study gives a critical review of flywheel energy storage systems and their feasibility in various applications. Flywheel energy storage systems have gained increased popularity as a method of environmentally friendly energy storage. Fly wheels store energy in mechanical rotational.

Flywheel Energy Storage Systems (FESS) rely on a mechanical working principle: An electric motor is used to spin a rotor of high inertia up to 20,000-50,000 rpm. Electrical energy is thus converted to kinetic energy for storage. For discharging,



the motor acts as a generator, braking the rotor to.

Energy storage flywheels are usually supported by active magnetic bearing (AMB) systems to avoid friction loss. Therefore, it can store energy at high efficiency over a long duration. Although it was estimated in [3] that after 2030, li-ion batteries would be more cost-competitive than any.



Mechanical structure of Huawei s flywheel energy storage



Technology: Flywheel Energy Storage

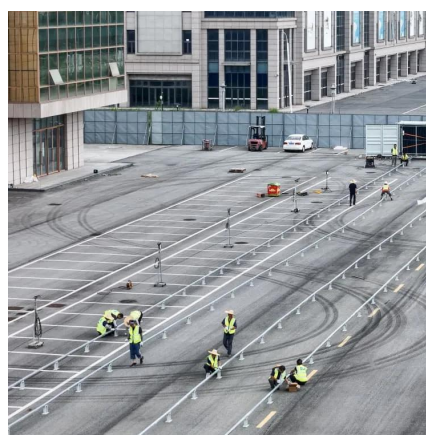
The system consists of a 40-foot container with 28 flywheel storage units, electronics enclosure, 750 V DC-circuitry, cooling, and a vacuum system. Costs for grid inverter, energy ...

[Request Quote](#)

Design of flywheel energy storage device with high specific energy

For the automotive use of flywheels, it is particularly important to increase the moment of inertia of the flywheel as much as possible while keeping the overall mass increase ...

[Request Quote](#)



A review of flywheel energy storage systems: state of the art ...

The lithium-ion battery has a high energy density, lower cost per energy capacity but much less power density, and high cost per power capacity. This explains its popularity in ...

[Request Quote](#)

[Flywheel Energy Storage Systems and Their ...](#)

Fly wheels store energy in mechanical rotational energy to be then converted into the required power form when required. Energy ...

[Request Quote](#)

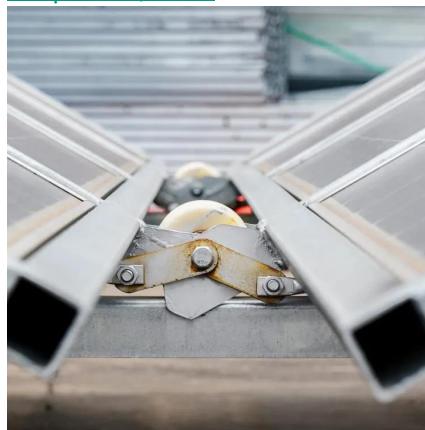


Flywheel energy storage

Overview Main components Physical characteristics Applications Comparison to electric batteries See also Further reading External links

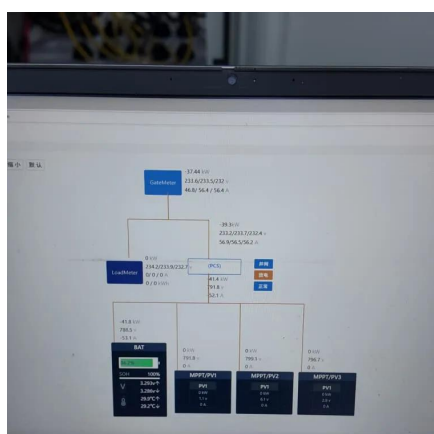
A typical system consists of a flywheel supported by rolling-element bearing connected to a motor-generator. The flywheel and sometimes motor-generator may be enclosed in a vacuum chamber to reduce friction and energy loss. First-generation flywheel energy-storage systems use a large steel flywheel rotating on mechanical bearings. Newer systems use carbon-fiber composite rotors

[Request Quote](#)



[Energy Storage Flywheel Rotors--Mechanical Design](#)

The present entry has presented an overview of the mechanical design of flywheel energy storage systems with discussions of manufacturing techniques for flywheel rotors, analytical modeling ...



Flywheel Energy Storage Systems and their Applications: A ...

Flywheel energy storage systems have gained increased popularity as a method of environmentally friendly energy storage. Fly wheels store energy in mechanical rotational ...

[Request Quote](#)

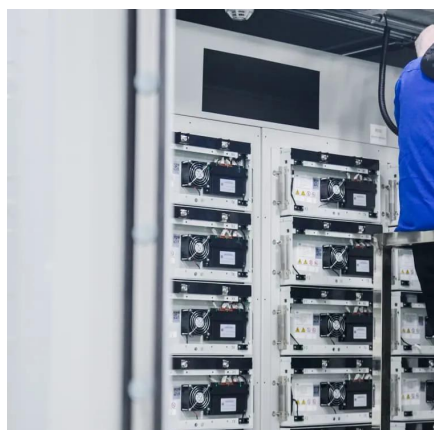
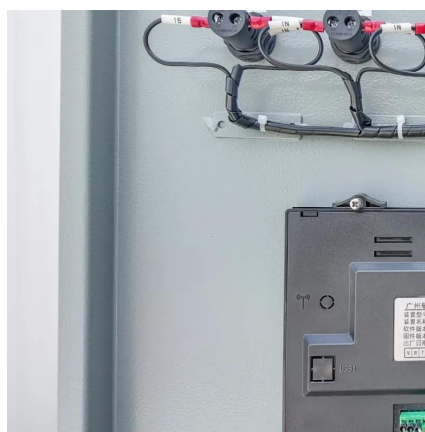


[Request Quote](#)

Flywheel energy storage

First-generation flywheel energy-storage systems use a large steel flywheel rotating on mechanical bearings. Newer systems use carbon-fiber composite rotors that have a higher ...

[Request Quote](#)



Flywheel Energy Storage Systems and Their Applications: A Review

Fly wheels store energy in mechanical rotational energy to be then converted into the required power form when required. Energy storage is a vital component of any power ...

[Request Quote](#)

Flywheel Energy Storage System

Flywheel energy storage stores electrical energy in the form of mechanical energy in a high-speed rotating rotor. The core technology is the rotor material, support bearing, and ...

[Request Quote](#)



Review of Flywheel Energy Storage



Systems structures and applications

Flywheel Energy Storage System (FESS) is an electromechanical energy storage system which can exchange electrical power with the electric network. It consists of an ...

[Request Quote](#)



Flywheel Energy Storage: The High-Speed Solution for Modern ...

Imagine a technology that stores energy like a spinning top but powers entire subway systems. That's flywheel energy storage technology in a nutshell--a mechanical ...

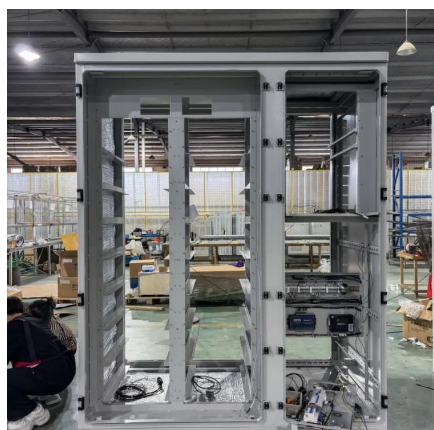
[Request Quote](#)



Review of Flywheel Energy Storage Systems structures and ...

Flywheel Energy Storage System (FESS) is an electromechanical energy storage system which can exchange electrical power with the electric network. It consists of an ...

[Request Quote](#)





Contact Us

For catalog requests, pricing, or partnerships, please visit:

<https://www.energyinnovationday.pl>

Phone: +48 22 335 1273

Email: info@energyinnovationday.pl

Scan the QR code to contact us via WhatsApp.

