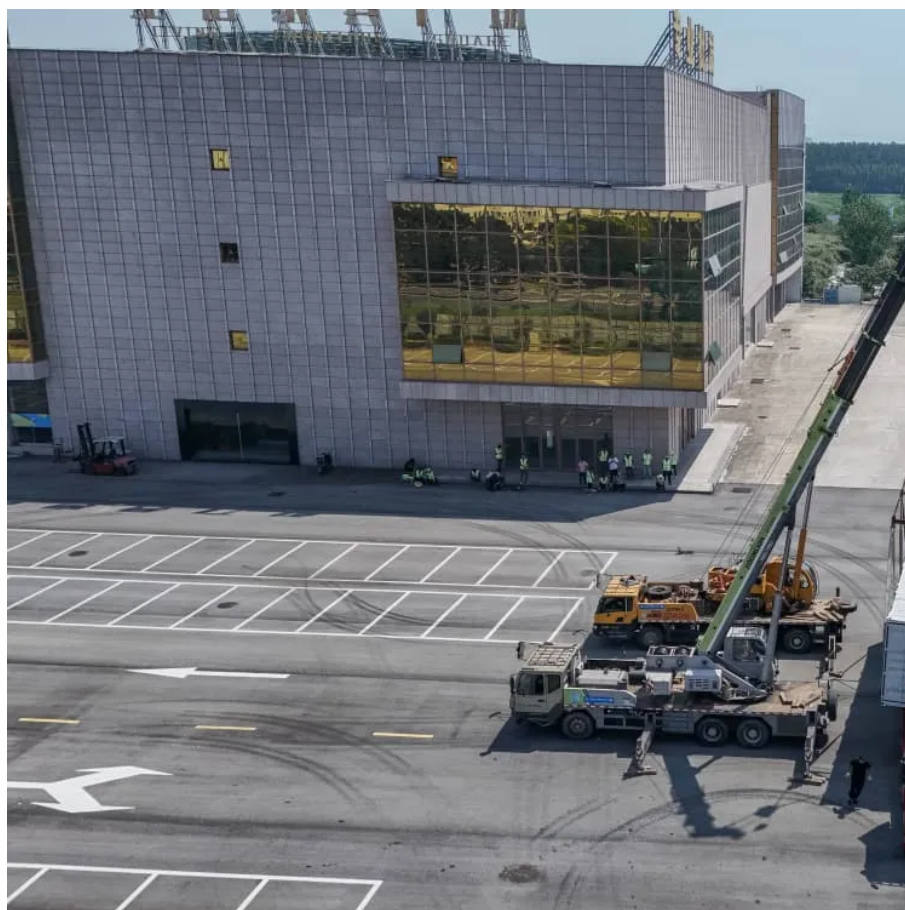




# Maximum wattage of monocrystalline solar panels





## Maximum wattage of monocrystalline solar panels



### [Monocrystalline Solar Panels: 2025 Costs & How ...](#)

Monocrystalline panels are the most efficient residential solar option, with most models reaching between 18% and 23% efficiency. ...

[Request Quote](#)

### [Maximizing Solar Panel Wattage: A Comprehensive Guide](#)

As of 2024, the highest wattage solar panels available for commercial use have surpassed 700 watts. These high-wattage solar panels are primarily used in large-scale solar ...

[Request Quote](#)



### [Highest Wattage Solar Panels: Everything You Need to Know](#)

In the commercial sector, the highest wattage solar panels currently available on the market are 700W Wattage Solar Panels. These panels, featuring a remarkable 144 half-cut solar cells, ...

[Request Quote](#)

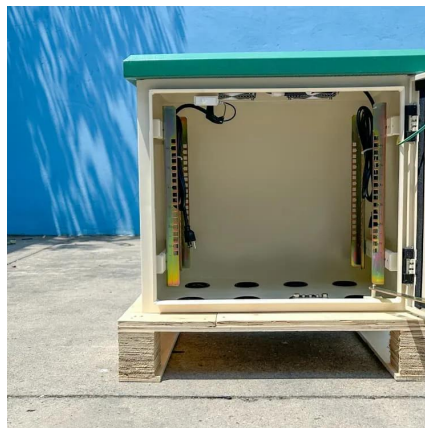


## What is the maximum power output of a monocrystalline solar cell?

The maximum power output of a monocrystalline solar cell can vary depending on several factors, including its size, efficiency, and operating conditions. However, typical ...



[Request Quote](#)



## What Factors Determine the Maximum Wattage of Monocrystalline Solar

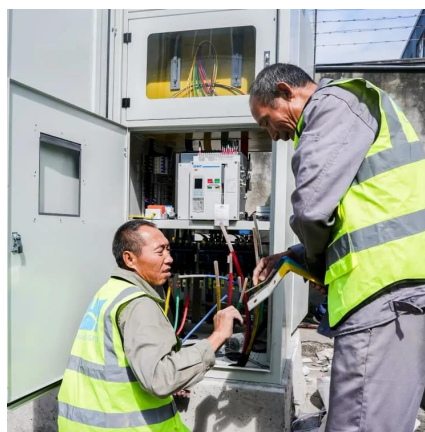
The maximum wattage of monocrystalline solar modules is determined by factors including cell efficiency (up to 24%), surface area, and sunlight exposure. Advanced manufacturing ...

[Request Quote](#)

## [Solar Panel Wattage Explained: How Many Watts Do You Need?](#)

Most residential solar panels fall into the 250W to 450W range, depending on the technology and manufacturer. But though commercial systems may use panels exceeding ...

[Request Quote](#)



## [What Is The Highest Wattage Solar Panel Available?](#)

Solar panels have become increasingly efficient and powerful, with some panels now capable of producing extremely high wattage. Understanding the factors that influence ...

[Request Quote](#)

**What is the maximum wattage of a**



## monocrystalline solar panel?

The maximum wattage of a monocrystalline solar panel typically ranges between 300 to 400 watts, depending on various factors such as efficiency, size, and technology ...

[Request Quote](#)



## [Monocrystalline Solar Panels: 2025 Costs & How They Work](#)

Monocrystalline panels are the most efficient residential solar option, with most models reaching between 18% and 23% efficiency. Premium brands may go even higher. ...

[Request Quote](#)



## What Is a Monocrystalline Solar Panel? Definition, Performance

Power Rating: The power rating, quantified in watts (W), is a critical factor affecting the cost of monocrystalline solar panels. Power rating signifies the maximum amount of ...

[Request Quote](#)



## [Monocrystalline solar panels: the expert guide \[2025\]](#)

The best monocrystalline solar panels have power ratings upwards of 500W, with some exceeding 600W and even 700W. In ...

[Request Quote](#)



## [Monocrystalline solar panels: the expert](#)



## [guide \[2025\]](#)

The best monocrystalline solar panels have power ratings upwards of 500W, with some exceeding 600W and even 700W. In contrast, you'll struggle to find a polycrystalline ...

[Request Quote](#)





## Contact Us

---

For catalog requests, pricing, or partnerships, please visit:

<https://www.energyinnovationday.pl>

Phone: +48 22 335 1273

Email: [info@energyinnovationday.pl](mailto:info@energyinnovationday.pl)

Scan the QR code to contact us via WhatsApp.

