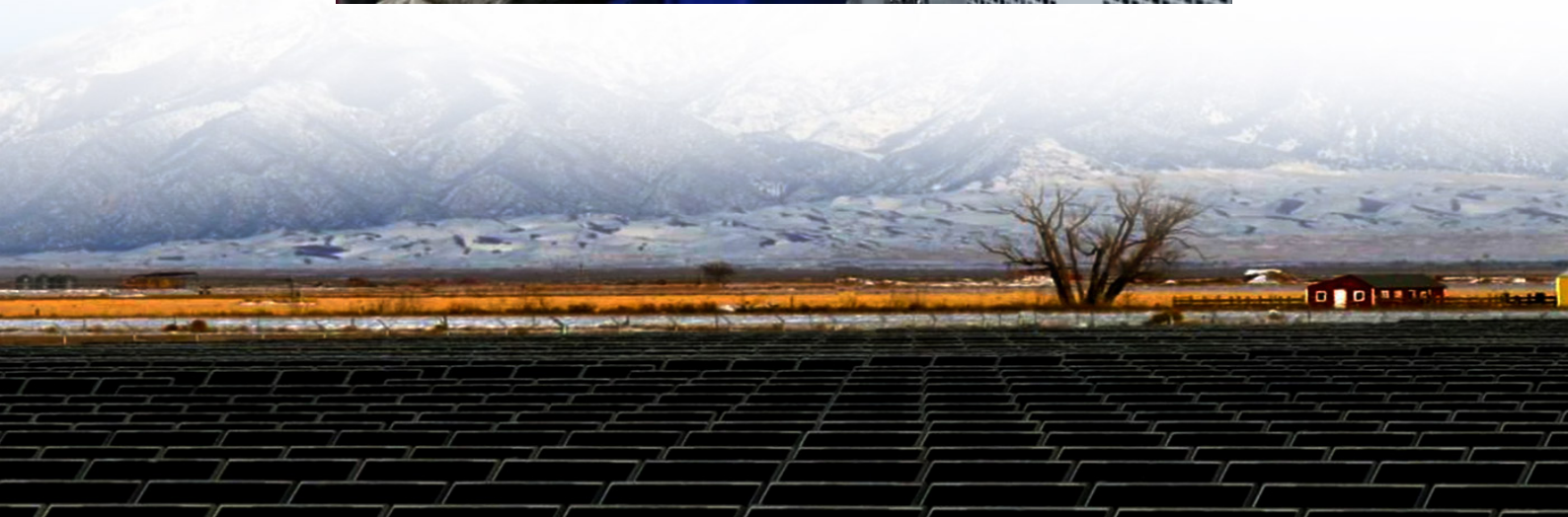




# Maseru solar container communication station Uninterruptible Power Supply Tower





## Maseru solar container communication station Uninterruptible Power



### [Top 10 Things to See and Do in Maseru](#)

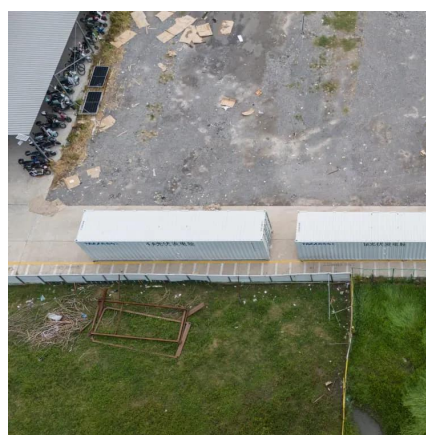
Maseru, the capital city of Lesotho, is a hidden gem in Southern Africa that often goes unnoticed on the global tourism radar. With its unique blend of natural beauty, cultural richness, and ...

[Request Quote](#)

### [Maseru, Lesotho , The Ultimate Travel Guide \(2026\)](#)

Maseru is the national capital and largest urban centre of the Kingdom of Lesotho, serving simultaneously as the administrative seat of Maseru District.

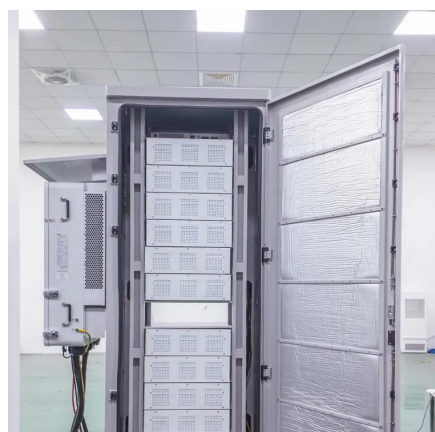
[Request Quote](#)



### [Maseru , Lesotho, Map, History, & Population , Britannica](#)

Maseru, capital and largest urban centre of Lesotho. It is on the left bank of the Caledon River near the border with Free State province, South Africa.

[Request Quote](#)



### [Maseru, Lesotho: All You Must Know Before You Go \(2026\)](#)

Maseru Tourism: Tripadvisor has 2,984 reviews of Maseru Hotels, Attractions, and Restaurants making it your best Maseru resource.

[Request Quote](#)



### [Explore Maseru: Culture, Mountains & History in Lesotho](#)

Maseru, the bustling capital of Lesotho, offers stunning views of lush mountains, rich cultural experiences, and vibrant markets. Visitors can immerse themselves in its unique blend of ...

[Request Quote](#)

### **Maseru - Travel guide at Wikivoyage**

Although there isn't a huge deal to see in Maseru, it is well worth stopping here upon entry into Lesotho to stock up before venturing further in (where there are very, very few Western-style ...

[Request Quote](#)



### [Maseru, Lesotho: The Ultimate Travel Guide 2025](#)

Discover Maseru, Lesotho's hidden gem, with our comprehensive 2025 travel guide. Find authentic accommodations, local cuisine, mountain adventures, and cultural experiences ...

[Request Quote](#)



### **Maseru**



Maseru is the capital and largest city of Lesotho. It is also the capital of the Maseru District. Located on the Caledon River, Maseru lies directly on the Lesotho-South Africa border. ...

[Request Quote](#)



## Maseru in Focus

Maseru, the capital of Lesotho, lies along the Caledon River near the South African border. It's a vibrant city blending modern development with traditional Basotho culture, known ...

[Request Quote](#)

## Maseru, Lesotho

Explore Maseru in Lesotho: find out population, land area, safety index, top things to do, and local travel tips. All the essential info for your next trip - powered by Trawellino.

[Request Quote](#)





## Contact Us

---

For catalog requests, pricing, or partnerships, please visit:

<https://www.energyinnovationday.pl>

Phone: +48 22 335 1273

Email: [info@energyinnovationday.pl](mailto:info@energyinnovationday.pl)

Scan the QR code to contact us via WhatsApp.

