



Low temperature requirements for lithium iron phosphate batteries





Low temperature requirements for lithium iron phosphate batteries



[LiFePo4 Battery Operating Temperature Range](#)

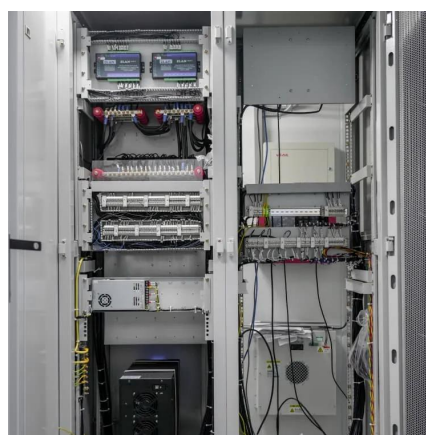
This thorough guide will explore the ideal temperature range for operating these batteries, provide valuable insights for managing temperature effectively, outline necessary ...

[Request Quote](#)

[Low-Temperature LiFePO4 Batteries: Overcoming Challenges ...](#)

Low temperatures cause a significant decrease in the available capacity of LiFePO4 batteries. The actual capacity that can be discharged from the battery at low ...

[Request Quote](#)



[What Are the Causes Affecting the Low-Temperature ...](#)

There are several key factors that can affect the low-temperature performance of LFP batteries, including: Electrolyte Viscosity: The viscosity of the battery's electrolyte increases at low ...

[Request Quote](#)

Research on the Low-Temperature Performance of Lithium Iron ...

Research on the Low-Temperature Performance of Lithium Iron Phosphate Batteries. Applied and Computational Engineering,186,256-263. The datasets used and/or ...



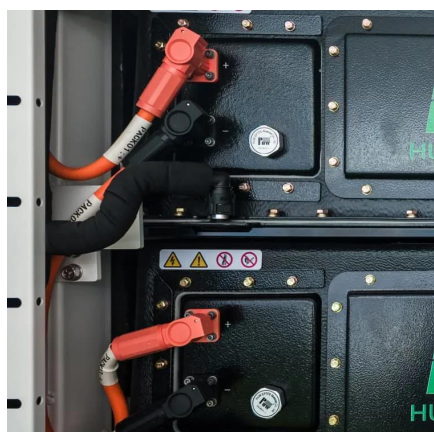
[Request Quote](#)



[LiFePo4 Battery Operating Temperature Range](#)

This thorough guide will explore the ideal temperature range for operating these batteries, provide valuable insights for managing ...

[Request Quote](#)



How Low Temperatures Impact Lithium Battery Life and BMS ...

Low temperatures significantly impact lithium battery performance through several mechanisms: In cold environments, the electrochemical reactions within lithium batteries slow ...

[Request Quote](#)



How do LiFePO4 batteries perform in cold temperatures? , RELiON

As with all batteries, cold temperatures will result in reduced performance. LiFePO4 batteries have significantly more capacity and voltage retention in the cold when compared to lead-acid ...

[Request Quote](#)



[A Comprehensive Review of the Research](#)



[Progress on the ...](#)

In conclusion, this review discusses the challenges and limitations associated with LiFePO 4 batteries in low-temperature settings and examines advancements in low-temperature lithium ...

[Request Quote](#)



A Comprehensive Review of the Research Progress on the Low-Temperature

In conclusion, this review discusses the challenges and limitations associated with LiFePO 4 batteries in low-temperature settings and examines advancements in low-temperature lithium ...

[Request Quote](#)

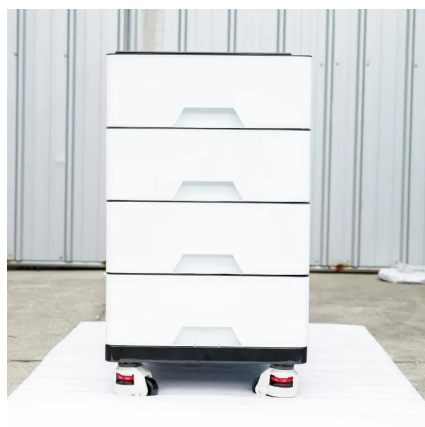


Enhancing low temperature properties through nano-structured

...

Lithium iron phosphate battery works harder and lose the vast majority of energy and capacity at the temperature below -20°C , because electron transfer resistance (R_{ct}) ...

[Request Quote](#)



Enhancing low temperature properties through nano-structured lithium

Lithium iron phosphate battery works harder and lose the vast majority of energy and capacity at the temperature below -20°C , because electron transfer resistance (R_{ct}) ...

[Request Quote](#)



How Low Temperatures Impact



Lithium Battery Life and BMS Requirements

Low temperatures significantly impact lithium battery performance through several mechanisms: In cold environments, the electrochemical reactions within lithium batteries slow ...

[Request Quote](#)



Research on the Low-Temperature Performance of Lithium Iron Phosphate

Research on the Low-Temperature Performance of Lithium Iron Phosphate Batteries. Applied and Computational Engineering,186,256-263. The datasets used and/or ...

[Request Quote](#)

What Is The Optimal Temperature Range For ...

An in-depth analysis of the temperature range of Lithium-ion lithium iron phosphate (LiFePO₄) batteries, with tips from specialist ...

[Request Quote](#)



LiFePO₄ Batteries in Cold Climates: Why They're Perfect for ...

Among the available options, LiFePO₄ (Lithium Iron Phosphate) batteries stand out as one of the most reliable and efficient solutions for cold-climate power needs. In this article, we explore ...

[Request Quote](#)

What Is The Optimal Temperature Range



[For LiFePO4 Battery?](#)

An in-depth analysis of the temperature range of Lithium-ion lithium iron phosphate (LiFePO4) batteries, with tips from specialist manufacturer BSLBATT.

[Request Quote](#)





Contact Us

For catalog requests, pricing, or partnerships, please visit:

<https://www.energyinnovationday.pl>

Phone: +48 22 335 1273

Email: info@energyinnovationday.pl

Scan the QR code to contact us via WhatsApp.

