



# Lithium iron phosphate battery station cabinet





## Lithium iron phosphate battery station cabinet



### Lithium (oral route)

Lithium is used to treat mania that is part of bipolar disorder (manic-depressive illness). It is also used on a daily basis to reduce the frequency and severity of manic episodes.

[Request Quote](#)

### Lithium: Side Effects and Precautions

Lithium is a mood stabilizer used to treat bipolar disorder. Lithium side effects may include diarrhea, rash, hair thinning, weight gain, and more.

[Request Quote](#)



### Lithium: MedlinePlus Drug Information

Lithium is used to treat and prevent episodes of mania (frenzied, abnormally excited mood) in people with bipolar disorder (manic-depressive disorder; a disease that causes episodes of ...

[Request Quote](#)

### Lithium 101

Most lithium is mined as rock minerals in Australia, while significant quantities are also produced from salars in Chile, Argentina and China. Lithium is produced from industrial ...

[Request Quote](#)



### [Lithium: Drug Uses, Dosage and Side Effects](#)

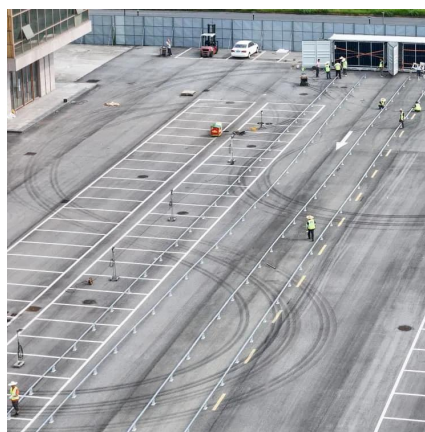
Lithium is used to treat the manic episodes of manic depression - hyperactivity, rushed speech, poor judgment and aggression. Learn about side effects, interactions and indications.

[Request Quote](#)

### [Lithium , Definition, Properties, Use, & Facts , Britannica](#)

lithium (Li), chemical element of Group 1 (Ia) in the periodic table, the alkali metal group, lightest of the solid elements. The metal itself--which is soft, white, and lustrous--and ...

[Request Quote](#)



### **Lithium**

Learn more about Lithium uses, effectiveness, possible side effects, interactions, dosage, user ratings and products that contain Lithium.

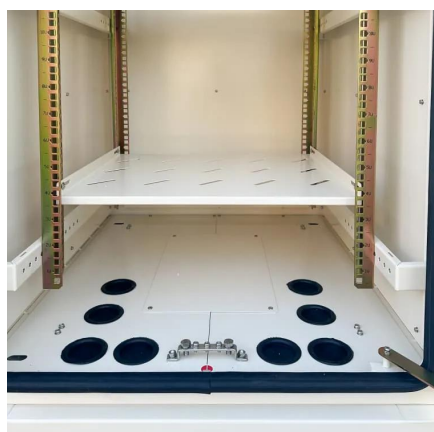
[Request Quote](#)

## **MEDICATION FACT SHEET Lithium**



Lithium toxicity is closely related to lithium blood levels and can occur at doses close to therapeutic levels; lithium levels should be monitored closely when starting the medication or if ...

[Request Quote](#)



## Lithium

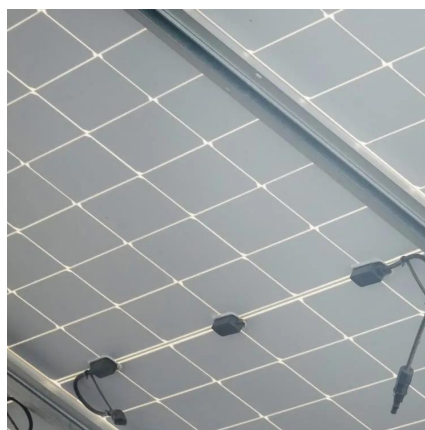
Lithium (from Ancient Greek: ?????, líthos, 'stone') is a chemical element; it has symbol Li and atomic number 3. It is a soft, silvery-white alkali metal. Under standard conditions, it is the ...

[Request Quote](#)

## Lithium

Most lithium is currently produced in Chile, from brines that yield lithium carbonate when treated with sodium carbonate. The metal is produced by the electrolysis of molten lithium chloride ...

[Request Quote](#)





## Contact Us

---

For catalog requests, pricing, or partnerships, please visit:

<https://www.energyinnovationday.pl>

Phone: +48 22 335 1273

Email: [info@energyinnovationday.pl](mailto:info@energyinnovationday.pl)

Scan the QR code to contact us via WhatsApp.

