



Khartoum solar container lithium battery pack discharge current





Overview

From solar farms needing reliable energy storage to electric vehicles requiring instant torque, the discharge current specifications directly impact real-world performance. Let's examine some concrete examples:.

From solar farms needing reliable energy storage to electric vehicles requiring instant torque, the discharge current specifications directly impact real-world performance. Let's examine some concrete examples:.

When working with Khartoum lithium battery packs, understanding discharge current isn't just technical jargon - it's the difference between optimal performance and premature failure. Imagine trying to drink a thick milkshake through different-sized straws. The discharge current works similarly.

Lithium batteries offer 3-5 times the energy density of lead-acid batteries. This means more energy storage in a smaller, lighter package—perfect for integrated or pole-mounted solar streetlights. [pdf] Does South Africa have a lithium-ion battery manufacturer?

While South Africa does not have any.

Battery capacity is a critical indicator of lithium battery performance, representing the amount of energy the battery can deliver under specific conditions (such as discharge rate, temperature, and cutoff voltage), usually measured in ampere-hours (Ah). For example, a 48V, 100Ah lithium battery.

The maximum discharging current of a lithium solar battery refers to the highest rate at which the battery can safely release its stored energy. It is typically measured in amperes (A) and is an important specification to consider when designing a solar power system. Exceeding the maximum.

The capacity of a battery or accumulator is the amount of energy stored according to specific temperature, charge and discharge current value and time of charge or discharge. Even if there is various technologies of batteries the principle of calculation of power, capacity, current and charge and.

Specially designed for solar containerized energy stations, our rugged photovoltaic



panels offer optimal output and resistance to harsh outdoor conditions. These panels are engineered to deliver stable performance in mobile and semi-permanent microgrid applications, maximizing energy production in. What are the discharge characteristics of lithium ion batteries?

When you analyze the discharge characteristics of li-ion batteries, you focus on the charge-discharge curves. These curves show how voltage and current change as the battery charges and discharges. You typically see a flat discharge curve in lithium-ion cells, which means the voltage remains stable through most of the discharge cycle.

What are the technical parameters of a lithium battery?

Learn about the key technical parameters of lithium batteries, including capacity, voltage, discharge rate, and safety, to optimize performance and enhance the reliability of energy storage systems. 1. Battery Capacity (Ah) 2. Nominal Voltage (V) 3. Charge/Discharge Rate (C) 4. Depth of Discharge (DOD) 5. State of Charge (SOC) 6.

Why are lithium batteries important for energy storage systems?

Safety Lithium batteries play a crucial role in energy storage systems, providing stable and reliable energy for the entire system. Understanding the key technical parameters of lithium batteries not only helps us grasp their performance characteristics but also enhances the overall efficiency of energy storage systems.

Why do lithium ion batteries have a flat discharge curve?

These curves show how voltage and current change as the battery charges and discharges. You typically see a flat discharge curve in lithium-ion cells, which means the voltage remains stable through most of the discharge cycle. This stability is essential for battery pack reliability in industrial, medical, and robotics applications.



Khartoum solar container lithium battery pack discharge current



[What Are the Discharge Characteristics of Li-ion ...](#)

You encounter the discharge characteristics of lithium-ion batteries every time you design a battery pack. These characteristics describe how ...

[Request Quote](#)

[KHARTOUM SOLAR LITHIUM BATTERY PACK FUNCTION](#)

The largest lithium-ion battery storage system in Bolivia is nearing completion at a co-located solar PV site, with project partners including Jinko, SMA and battery storage provider Cegasa. ...

[Request Quote](#)



[What is the maximum discharging current for a ...](#)

The maximum discharging current of a lithium solar battery refers to the highest rate at which the battery can safely release its stored ...

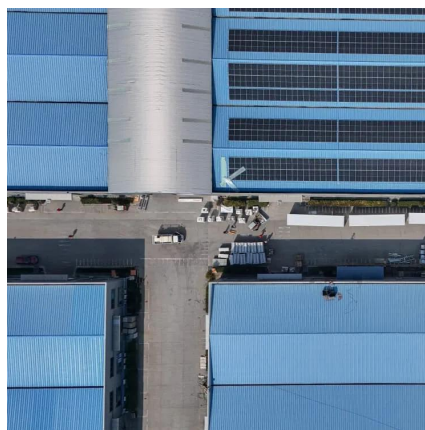
[Request Quote](#)

[Khartoum solar lithium battery pack function](#)

Engineered to complement solar folding containers, our lithium-ion battery systems deliver dependable power storage with fast charge/discharge capabilities. Their modular architecture ...



[Request Quote](#)



NEW ENERGY LITHIUM BATTERY KHARTOUM

The global solar storage container market is experiencing explosive growth, with demand increasing by over 200% in the past two years. Pre-fabricated containerized solutions now ...

[Request Quote](#)

[KHARTOUM LITHIUM BATTERY ENERGY STORAGE](#)

The global solar storage container market is experiencing explosive growth, with demand increasing by over 200% in the past two years. Pre-fabricated containerized solutions now ...

[Request Quote](#)



[What Are the Discharge Characteristics of Li-ion Batteries](#)

You encounter the discharge characteristics of li-ion batteries every time you design a battery pack. These characteristics describe how voltage drops during discharge, how a flat ...

[Request Quote](#)

Technical Parameters and



Management of Lithium Batteries in ...

Learn about the key technical parameters of lithium batteries, including capacity, voltage, discharge rate, and safety, to optimize performance and enhance the reliability of ...

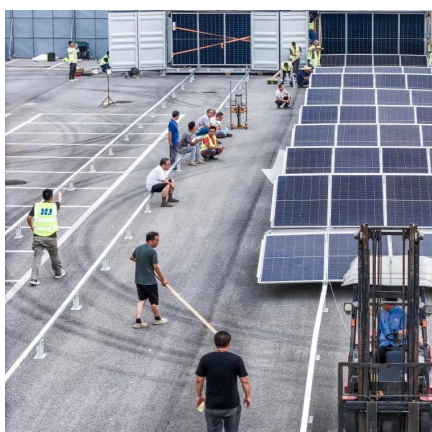
[Request Quote](#)



[KHARTOUM SOLAR LITHIUM BATTERY PACK FUNCTION](#)

The largest lithium-ion battery storage system in Bolivia is nearing completion at a co-located solar PV site, with project partners including Jinko, SMA and battery storage provider Cegasa. ...

[Request Quote](#)



What is the maximum discharging current for a lithium solar battery?

The maximum discharging current of a lithium solar battery refers to the highest rate at which the battery can safely release its stored energy. It is typically measured in ...

[Request Quote](#)



Battery pack calculator : Capacity, C-rating, ampere, charge and

The capacity of a battery or accumulator is the amount of energy stored according to specific temperature, charge and discharge current value and time of charge or discharge.

[Request Quote](#)



KHARTOUM BRAND LITHIUM



BATTERY

The battery management system covers voltage and current monitoring; charge and discharge estimation, protection, and equalization; thermal management; and battery data actuation and ...

[Request Quote](#)



Understanding Discharge Current in Khartoum Lithium Battery ...

When working with Khartoum lithium battery packs, understanding discharge current isn't just technical jargon - it's the difference between optimal performance and premature failure.

[Request Quote](#)



Contact Us

For catalog requests, pricing, or partnerships, please visit:

<https://www.energyinnovationday.pl>

Phone: +48 22 335 1273

Email: info@energyinnovationday.pl

Scan the QR code to contact us via WhatsApp.

