



Juba Solar PV Site Location





Overview

It is located in Central Equatoria, South Sudan. According to GlobalData, who tracks and profiles over 170,000 power plants worldwide, the project is currently active. It has been developed in multiple phases. Post completion of construction, the project got commissioned in.

It is located in Central Equatoria, South Sudan. According to GlobalData, who tracks and profiles over 170,000 power plants worldwide, the project is currently active. It has been developed in multiple phases. Post completion of construction, the project got commissioned in.

The Juba Solar Power Station is a proposed 20 MW (27,000 hp) solar power plant in South Sudan. The solar farm is under development by a consortium comprising Elsewedy Electric Company of Egypt, Asunim Solar from the United Arab Emirates (UAE) and I-kWh Company, an energy consultancy firm also based.

Global Solar Power Tracker, a Global Energy Monitor project. Other names: Juba Solar Pv Juba (Elsewedy Power) solar farm is a solar photovoltaic (PV) farm under construction in Juba, Juba Payam, Juba County, Central Equatoria, South Sudan. Read more about Solar capacity ratings. The map below shows.

South Sudan has taken a transformative step toward sustainable energy by launching its first solar power plant. Built by Egypt's Elsewedy Electric, the 20-megawatt power plant is located in Nesitu, Central Equatoria State, just 30 kilometers from the capital, Juba. This \$45 million project marks.

Ezra Juba Solar PV Park is a 26MW solar PV power project. It is located in Central Equatoria, South Sudan. According to GlobalData, who tracks and profiles over 170,000 power plants worldwide, the project is currently active. It has been developed in multiple phases. Post completion of.

Juba, Central Equatoria, South Sudan is a pretty good location for generating solar energy all year round. This is because it's located in the Tropics where sunlight is consistent throughout most of the year. Seasons here are usually marked by wet and dry periods rather than big temperature.

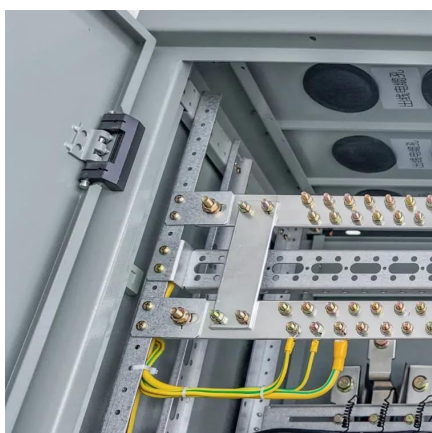
Ezra Juba Solar PV Park is a 26MW solar PV power project. It is located in Central



Equatoria, South Sudan. According to GlobalData, who tracks and profiles over 170,000 power plants worldwide, the project is currently active. It has been developed in multiple phases. Post completion of.



Juba Solar PV Site Location



juba green electricity

The solar power plant, which will start construction soon, will be located 20 km from the capital Juba, the capital of Southern Sudan. Elsewedy Electric is responsible for designing, supplying ...

[Request Quote](#)

Juba (Elsewedy Power) solar farm

Juba (Elsewedy Power) solar farm is a solar photovoltaic (PV) farm under construction in Juba, Juba Payam, Juba County, Central Equatoria, South Sudan. Read more ...

[Request Quote](#)



[South Sudan Launches First 20-Megawatt Solar ...](#)

South Sudan has taken a transformative step toward sustainable energy by launching its first solar power plant. Built by Egypt's ...

[Request Quote](#)



Juba Solar PV, Battery , Power Project , Live Data , African Energy

Access continuously updated & detailed information on the Juba Solar PV, Battery project, including its history, financiers & operational status



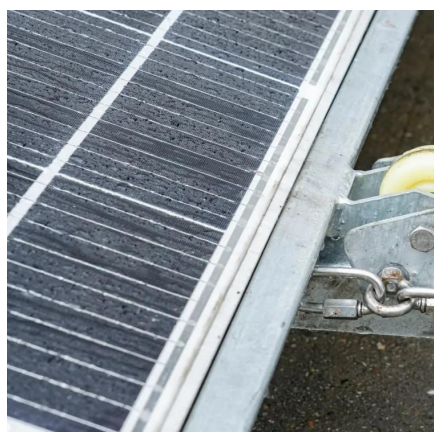
[Request Quote](#)



South Sudan 3 mw solar power plant

Power plant profile: Ezra Juba Solar PV Park, South Sudan Ezra Juba Solar PV Park is a 26MW solar PV power project. It is located in Central Equatoria, South Sudan. According to ...

[Request Quote](#)



[South Sudan Launches First 20-Megawatt Solar Power Plant](#)

South Sudan has taken a transformative step toward sustainable energy by launching its first solar power plant. Built by Egypt's Elsewedy Electric, the 20-megawatt power ...

[Request Quote](#)



[Power plant profile: Ezra Juba Solar PV Park, South Sudan](#)

Ezra Juba Solar PV Park is a 26MW solar PV power project. It is located in Central Equatoria, South Sudan.

[Request Quote](#)



Juba Solar Power Station



The Juba Solar Power Station is a proposed 20 MW (27,000 hp) solar power plant in South Sudan. The solar farm is under development by a consortium comprising Elsewedy Electric ...

[Request Quote](#)



Juba Solar PV Park

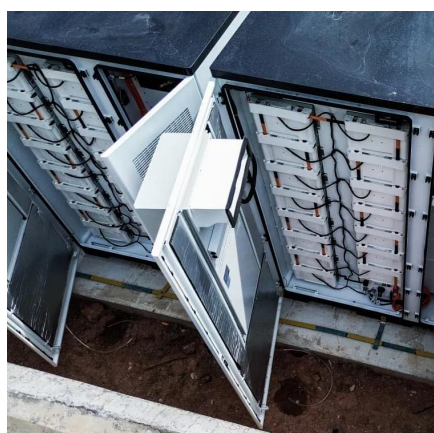
Juba Solar PV Park is a solar PV project located in Central Equatoria, South Sudan. The project is owned and being developed by Elsewedy Power System Projects Co.

[Request Quote](#)

[Solar Power Triumph in South Sudan: Juba's PV ...](#)

Juba Solar PV Park is a 20MW solar PV power project. It is planned in Central Equatoria, South Sudan. According to GlobalData, who tracks ...

[Request Quote](#)



[Solar PV Analysis of Juba, South Sudan](#)

Juba, Central Equatoria, South Sudan is a pretty good location for generating solar energy all year round. This is because it's located in the Tropics where sunlight is consistent throughout most ...

[Request Quote](#)

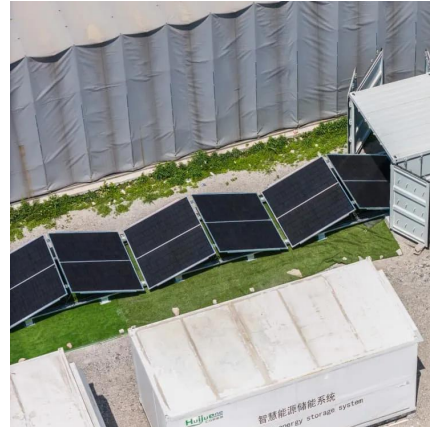
Solar Power Triumph in South Sudan:



Juba's PV Park Lights Up ...

Juba Solar PV Park is a 20MW solar PV power project. It is planned in Central Equatoria, South Sudan. According to GlobalData, who tracks and profiles over 170,000 power plants ...

[Request Quote](#)





Contact Us

For catalog requests, pricing, or partnerships, please visit:

<https://www.energyinnovationday.pl>

Phone: +48 22 335 1273

Email: info@energyinnovationday.pl

Scan the QR code to contact us via WhatsApp.

