



# Is there a battery when the base station is not powered on





## Overview

---

In the event of a power outage, your SimpliSafe® Base Station is equipped with a backup rechargeable battery supply that will keep your Base Station powered for up to 24 hrs.

In the event of a power outage, your SimpliSafe® Base Station is equipped with a backup rechargeable battery supply that will keep your Base Station powered for up to 24 hrs.

In the event of a power outage, your SimpliSafe® Base Station is equipped with a backup rechargeable battery supply that will keep your Base Station powered for up to 24 hrs. It also features a cellular module, and, with a professional monitoring plan, will operate on a cellular network instead of.

The Arlo base station includes an optional battery backup. This feature keeps your Arlo Home Security System connected during power or internet outages for up to 12 hours. It has a pre-installed SIM card that provides automatic cellular connectivity when your internet is down. To maintain security.

Telecom base station battery is a kind of energy storage equipment dedicatedly designed to provide backup power for telecom base stations, applied to supply continuous and stable power to base station equipment when the utility power is interrupted or malfunctions, which plays a vital role in the.

Telecom batteries refer to batteries that are used as a backup power source for wireless communications base stations. In the event that an external power source cannot be used, the telecom battery can provide a continuous power supply for the communication base station. Telecom batteries usually.

The batteries charge during off-peak hours, like midday and late at night, when energy is more available and demand is low. When the grid goes down, the battery hub separates your house from the grid and all the energy in the battery goes to power your home. When the grid is working and chances of.

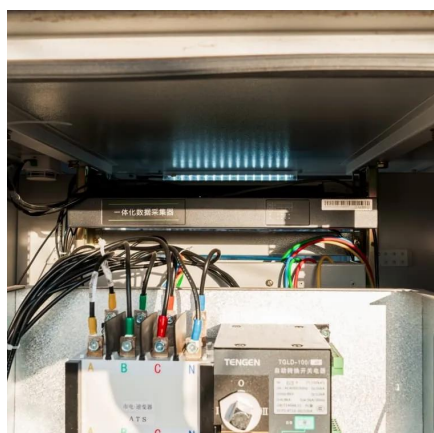
Base station energy storage batteries play a critical role in enhancing efficiency and reliability in telecommunication networks. Their primary purpose is \*\*1. to ensure continuous power supply during outages, \*\*2. to optimize energy



consumption by storing excess energy generated from renewable.



## Is there a battery when the base station is not powered on



### [What Powers Telecom Base Stations During Outages?](#)

Telecom batteries for base stations are backup power systems using valve-regulated lead-acid (VRLA) or lithium-ion batteries. They ensure uninterrupted connectivity ...

[Request Quote](#)

### [What is the purpose of batteries at telecom base ...](#)

In the event that an external power source cannot be used, the telecom battery can provide a continuous power supply for the communication ...

[Request Quote](#)



### **Telecom Base Station Backup Power Solution: Design Guide for ...**

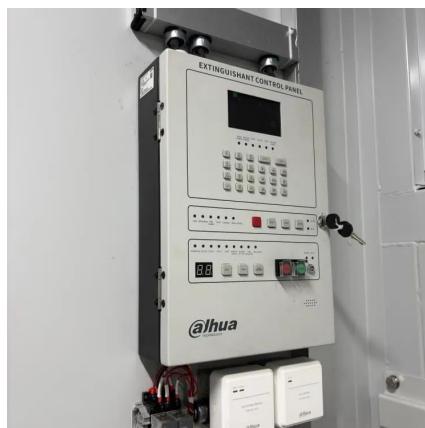
Among various battery technologies, Lithium Iron Phosphate (LiFePO4) batteries stand out as the ideal choice for telecom base station backup power due to their high safety, ...

[Request Quote](#)

### [How about base station energy storage batteries](#)

Base stations primarily utilize lithium-ion and lead-acid batteries. Lithium-ion batteries are favored for their higher energy density, ...

[Request Quote](#)



### [How do you reboot SimpliSafe base station?](#)

When a sensor is displayed as ``Not Responding'', it could either be a battery or connection issue. I would first replace the batteries in your sensors that give you this error message to see if that ...

[Request Quote](#)



### [How about base station energy storage batteries , NenPower](#)

Base stations primarily utilize lithium-ion and lead-acid batteries. Lithium-ion batteries are favored for their higher energy density, longer lifespan, and faster charging ...

[Request Quote](#)



### **What Are the Key Considerations for Telecom Batteries in Base Stations?**

Telecom batteries for base stations are backup power systems that ensure uninterrupted connectivity during grid outages. Typically using valve-regulated lead-acid (VRLA) or lithium ...

[Request Quote](#)



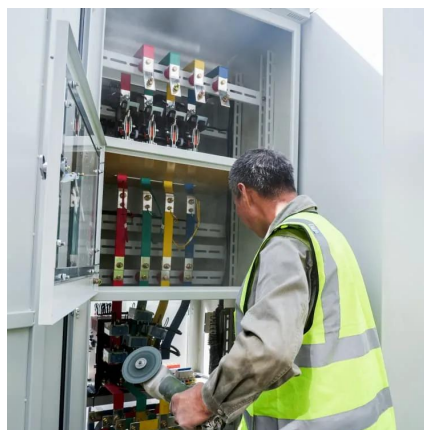
### **What Are the Key Considerations for**



## Telecom Batteries in Base ...

Telecom batteries for base stations are backup power systems that ensure uninterrupted connectivity during grid outages. Typically using valve-regulated lead-acid (VRLA) or lithium ...

[Request Quote](#)



## [Telecom Base Station Backup Power Solution: ...](#)

Among various battery technologies, Lithium Iron Phosphate (LiFePO4) batteries stand out as the ideal choice for telecom base station ...

[Request Quote](#)



## [Overview of Telecom Base Station Batteries](#)

In order to improve the endurance of the base station batteries, more attention will go to the development and implementation of high energy density batteries to reduce the impact on the ...

[Request Quote](#)



## **Will My SimpliSafe® System Still Work if I Lose Power or Wi-Fi**

Though we recommend contacting support if you need to change the batteries in your Base Station, if your power outage lasts longer than 24 hours, you can replace your Base Station's ...

[Request Quote](#)



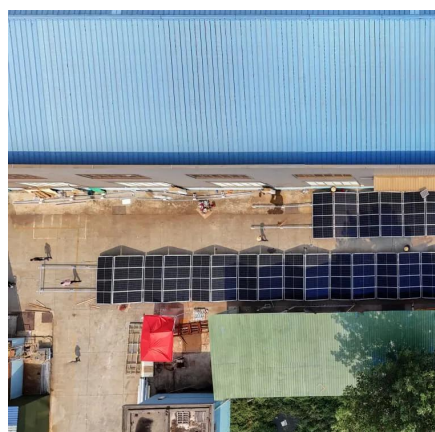
## [Arlo Base Station: Does It Have Battery](#)



## [Backup For Home ...](#)

The Arlo base station includes an optional battery backup. This feature keeps your Arlo Home Security System connected during power or internet outages for up to 12 hours.

[Request Quote](#)



## [How the Base battery works: A complete guide to ...](#)

Your Base battery keeps your home powered, protects against outages, and helps you use energy more efficiently. By understanding how it works and ...

[Request Quote](#)

## [How the Base battery works: A complete guide to grid ...](#)

Your Base battery keeps your home powered, protects against outages, and helps you use energy more efficiently. By understanding how it works and preparing for outages, you can get ...

[Request Quote](#)



## [What is the purpose of batteries at telecom base stations?](#)

In the event that an external power source cannot be used, the telecom battery can provide a continuous power supply for the communication base station.

[Request Quote](#)

## [Overview of Telecom Base Station](#)



## Batteries

In order to improve the endurance of the base station batteries, more attention will go to the development and implementation of high energy

...

[Request Quote](#)





## Contact Us

---

For catalog requests, pricing, or partnerships, please visit:

<https://www.energyinnovationday.pl>

Phone: +48 22 335 1273

Email: [info@energyinnovationday.pl](mailto:info@energyinnovationday.pl)

Scan the QR code to contact us via WhatsApp.

