



Is the outdoor base station connected to electricity





Overview

The ESB-series outdoor base station system utilizes solar energy and diesel engines to achieve uninterrupted off grid power supply.

The ESB-series outdoor base station system utilizes solar energy and diesel engines to achieve uninterrupted off grid power supply.

With a long enough ethernet cable, you can place the Base Station farther out, like in a shed or barn, to give you more flexibility with placement. With the Wyze Cam Outdoor being outdoors, there's a greater risk of a grab and run. In case this happens, once you set up your Base Station and camera.

The ESB-series outdoor base station system utilizes solar energy and diesel engines to achieve uninterrupted off grid power supply. Solar power generation is the use of photovoltaic panels to convert solar energy into electrical energy -48V DC, and then stabilize the load power supply through.

Power Supply: The power source provides the electrical energy to base station elements. It often features auxiliary power supply mechanisms that guarantee operation in case of lost or interrupted electricity, during blackouts. **Baseband Processor:** The baseband processor is responsible for the.

As 5G micro-base stations extend from cities to suburbs, rural areas, highways, wind and solar power stations, and even islands, these locations lack machine rooms, personnel, and have harsh environments. Traditional power solutions expose issues such as space occupation, complex interfaces, poor.

A semi-permanent or permanent base station helps to eliminate the types of error that can result from repeated daily setups, and ensures that you always use the GNSS antenna at the exact original location. The requirement for a permanent base station setup increases as more receivers that use the.

R01 Outdoor Communication Base Site from Huijue Group is a multi-application, highly efficient outdoor communication solution. A modular base station that integrates photovoltaic power, wind power, and battery storage contributes to the stability of power supply for communication base stations. What are the components of a base station?



Power Supply: The power source provides the electrical energy to base station elements. It often features auxiliary power supply mechanisms that guarantee operation in case of lost or interrupted electricity, during blackouts. **Baseband Processor:** The baseband processor is responsible for the processing of the digital signals.

How does a weightless base station work?

This weatherproof Weightless™ Outdoor Base Station creates a low-power, wide area network (LPWAN) suitable for IoT devices. Data collected by the outdoor base station is sent through a backhaul Ethernet or LTE network to the backend. The Weightless™ Indoor Base Station creates a low-power, wide-area network (LPWAN) suitable for IoT devices.

How does a base station work?

Base stations typically have a transceiver, capable of sending and receiving wireless signals; Otherwise if they only send the trailer it will be considered a transmitter or broadcast point only. The base station will have one or more RF antennas installed to transmit and receive RF signals from other devices.

What are the properties of a base station?

Here are some essential properties: **Capacity:** Capacity of a base station is its capability to handle a given number of simultaneous connections or users.

Coverage Area: The coverage area is a base station is that geographical area within which mobile devices can maintain a stable connection with the base station.



Is the outdoor base station connected to electricity



Telecommunication base station system working principle and ...

When the output mains power is cut off, the rectifier module stops working, and the solar energy cannot supply power normally. The system output load is powered by the battery ...

[Request Quote](#)



Base Stations

Power Supply: The power source provides the electrical energy to base station elements. It often features auxiliary power supply mechanisms that guarantee operation in ...

[Request Quote](#)

[Common ways to set up a base station](#)

Connect the antennas to the receiver using the appropriate cables. The receiver uses its own integrated battery, or an external 12 V battery through the 12 V crocodile clips cable that are ...

[Request Quote](#)



[Weightless AMI Meters Turnkey Products . Ubiik](#)

This weatherproof Weightless(TM) Outdoor Base Station creates a low-power, wide area network (LPWAN) suitable for IoT devices. Data collected by the outdoor base station is sent through a ...

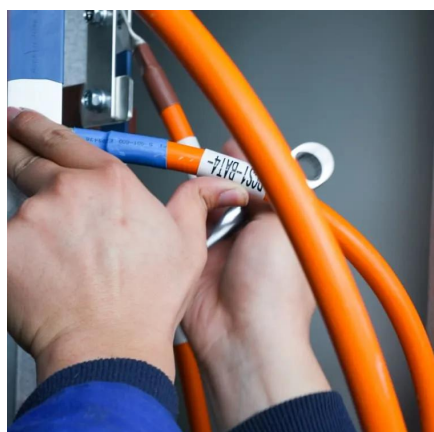
[Request Quote](#)



Outdoor Communication Energy Base Station - Reliable Power ...

Discover our Outdoor Communication Energy Base Station, designed for off-grid and grid-connected applications. Supports solar, wind, and generator power inputs with advanced ...

[Request Quote](#)



Base Stations

Power Supply: The power source provides the electrical energy to base station elements. It often features auxiliary power supply ...

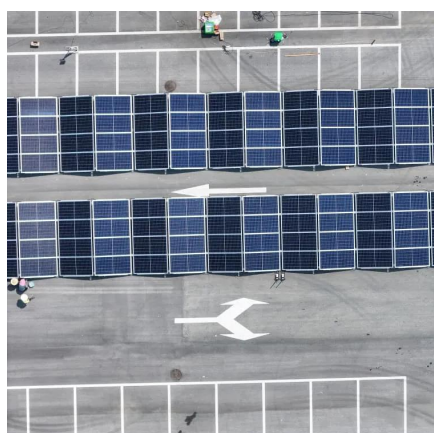
[Request Quote](#)



Outdoor Communication Base Site R01 - Modular Power Station ...

It supports both grid-connected and off-grid scenarios and supplies a complete hybrid energy solution with multiple voltage outputs. The r01 series includes container sizes of 10 feet and 20 ...

[Request Quote](#)

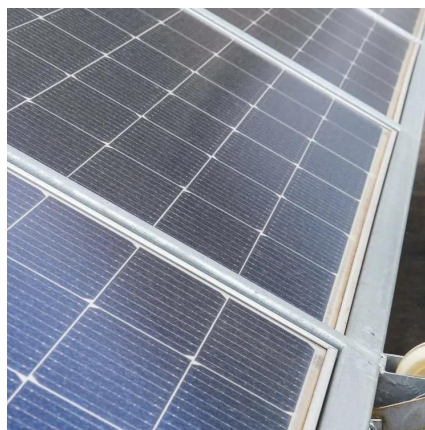


Wyze Base Station Setup Guide



Plug one end of the provided Ethernet cable into the base station, and the other end into the back of your router. The status light will flash blue, then turn solid blue when ...

[Request Quote](#)



About the Wyze Base Station

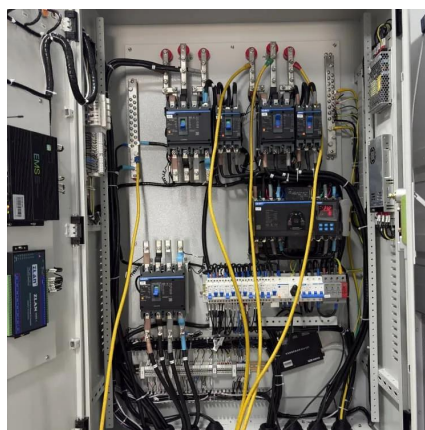
Besides acting as a connection point for Wyze Cam Outdoor, you can use your Wyze Base Station in Travel Mode to connect to your camera without internet access.

[Request Quote](#)

Wyze Base Station Setup

To connect your Wyze Base Station using an ethernet cable, follow these steps: Plug the Wyze Base Station into a power supply using the provided power adapter. Wait for ...

[Request Quote](#)



[Soetek's Highly Integrated Telecom Power ...](#)

The integrated high-efficiency rectifier module ensures stable conversion of AC power into the DC power required by the equipment. ...

[Request Quote](#)

Soetek's Highly Integrated Telecom



Power System Solves Outdoor Base

The integrated high-efficiency rectifier module ensures stable conversion of AC power into the DC power required by the equipment. When power is interrupted, the built-in ...

[Request Quote](#)





Contact Us

For catalog requests, pricing, or partnerships, please visit:

<https://www.energyinnovationday.pl>

Phone: +48 22 335 1273

Email: info@energyinnovationday.pl

Scan the QR code to contact us via WhatsApp.

