





## Overview

---

A grid-tie inverter converts (DC) into an (AC) suitable for injecting into an , at the same voltage and frequency of that power grid. Grid-tie inverters are used between local electrical power generators: , , , and the grid. To inject electrical power efficiently and safely into the grid, grid-tie inverters.

Grid-connected inverters are power electronic devices that convert direct current (DC) power generated by renewable energy sources, such as solar panels or wind turbines, into alternating current (AC) power that can be fed into the electrical grid or used locally.

Grid-connected inverters are power electronic devices that convert direct current (DC) power generated by renewable energy sources, such as solar panels or wind turbines, into alternating current (AC) power that can be fed into the electrical grid or used locally.

An inverter is one of the most important pieces of equipment in a solar energy system. It's a device that converts direct current (DC) electricity, which is what a solar panel generates, to alternating current (AC) electricity, which the electrical grid uses. In DC, electricity is maintained at.

A grid-tie inverter converts direct current (DC) into an alternating current (AC) suitable for injecting into an electrical power grid, at the same voltage and frequency of that power grid. Grid-tie inverters are used between local electrical power generators: solar panel, wind turbine.

Learn how solar inverter is connected to the grid and how each inverter functions when connected or not connected to the grid. Welcome to our series answering reader questions and concerns about how to cut the utility-company cord. How can I convert my off-grid energy system to a grid-tied system?

Grid-connected inverters are power electronic devices that convert direct current (DC) power generated by renewable energy sources, such as solar panels or wind turbines, into alternating current (AC) power that can be fed into the electrical grid or used locally. The primary function of a.

Grid-connected inverters do need to be connected to the grid to function properly.

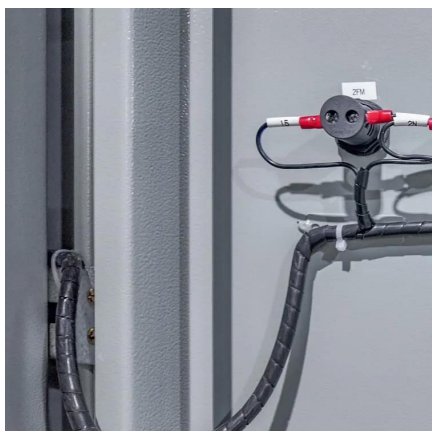


These inverters are designed to convert direct current (DC) from renewable energy sources, such as solar photovoltaic panels or wind turbines, into alternating current (AC) that synchronizes with the grid in order to.

A specialized inverter receives power from your solar panels and converts the DC voltage they produce directly into grid-compatible AC power. The grid-tie inverter enables your home to not just import power from the utility, but export power to the utility as well. When solar energy is available.



## Is the grid-connected inverter real



### [Solar Integration: Inverters and Grid Services Basics](#)

As more solar systems are added to the grid, more inverters are being connected to the grid than ever before. Inverter-based generation can produce energy at any frequency and does not ...

[Request Quote](#)

### Grid-tie inverter

Overview  
Payment for injected power  
Operation Types  
Datasheets  
External links

A grid-tie inverter converts direct current (DC) into an alternating current (AC) suitable for injecting into an electrical power grid, at the same voltage and frequency of that power grid. Grid-tie inverters are used between local electrical power generators: solar panel, wind turbine, hydro-electric, and the grid. To inject electrical power efficiently and safely into the grid, grid-tie inverters ...



[Request Quote](#)



### Grid

CSS Grid Layout provides a two dimensional layout system, controlling layout in rows and columns. In this module discover everything grid has to offer.

[Request Quote](#)

### [Solar Grid Connected Inverter in the Real World: 5 Uses You](#)



Solar grid connected inverters are essential components in solar power systems. They serve as the bridge between solar panels and the electrical grid, ensuring that the ...

[Request Quote](#)



### [Does a grid-connected inverter need a grid to operate?](#)

Normal operation of the grid: the grid-connected inverter can only work when the grid is in normal operation. If there is a grid failure or power outage, the inverter will stop ...

[Request Quote](#)



## Electrical grid

Electrical grid Diagram of an electrical grid (generation system in red, transmission system in blue, distribution system in green) An electrical grid (or electricity network) is an interconnected ...

[Request Quote](#)



## Home , Grid United

Our short video describes how America's electric grid came to be and the solutions Grid United is driving forward - long-distance, high-voltage transmission lines to strengthen and modernize ...

[Request Quote](#)



## The Ultimate Guide To On-Grid



## Inverters: How They Work And ...

What Is a On-Grid Inverter? A On-Grid inverter, also known as a grid-interactive or grid-connected inverter, is a device that converts the direct current (DC) electricity generated by solar panels

...

[Request Quote](#)



## What is a Grid-Tied Inverter?

A specialized inverter receives power from your solar panels and converts the DC voltage they produce directly into grid-compatible AC power. The grid-tie inverter enables your ...

[Request Quote](#)

## [Solar Integration: Inverters and Grid Services Basics](#)

As more solar systems are added to the grid, more inverters are being connected to the grid than ever before. Inverter-based generation can ...

[Request Quote](#)



## An Interactive Guide to CSS Grid

CSS Grid is one of the most amazing parts of the CSS language. It gives us a ton of new tools we can use to create sophisticated and fluid layouts. It's also surprisingly ...

[Request Quote](#)

## [How Solar Inverter is Connected to the](#)



## [Grid](#)

Learn how solar inverter is connected to the grid and how each inverter functions when connected or not connected to the grid.

[Request Quote](#)



## **How Grid-Tied Inverters Synchronize Solar Power with Utility Grids**

At the heart of any solar power system connected to the grid is the grid-tied inverter. Unlike standalone solar systems, which rely on batteries for energy storage, grid-tied ...

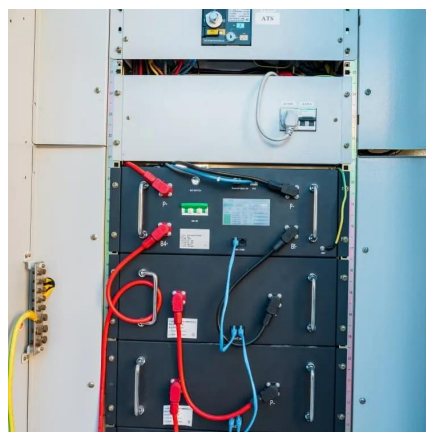
[Request Quote](#)



## **CSS Grid Layout**

The Grid Layout Module allows developers to easily create complex web layouts. The Grid Layout Module makes it easy to design a responsive layout structure, without using float or positioning.

[Request Quote](#)



## **What is a Grid-Tied Inverter?**

A specialized inverter receives power from your solar panels and converts the DC voltage they produce directly into grid-compatible ...

[Request Quote](#)

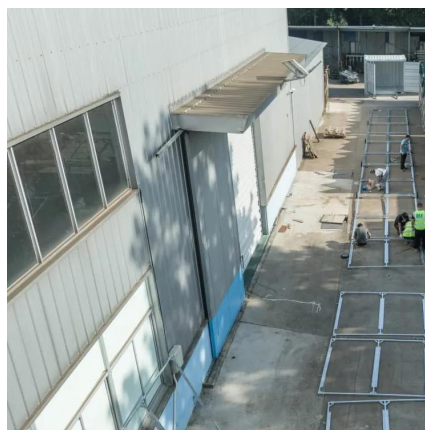
[GRID: A simple visual cheatsheet for CSS](#)



## [Grid Layout](#)

Learn all about the properties available in CSS Grid Layout through simple visual examples.

[Request Quote](#)



## **CSS grid layout**

Like tables, grid layout enables an author to align elements into columns and rows. However, many more layouts are either possible or easier with CSS grid than they were with ...

[Request Quote](#)



## [Grid-Connected Inverters: The Ultimate Guide](#)

Grid-connected inverters are power electronic devices that convert direct current (DC) power generated by renewable energy sources, such as solar panels or wind turbines, ...

[Request Quote](#)



## **Grid-tie inverter**

A grid-tie inverter converts direct current (DC) into an alternating current (AC) suitable for injecting into an electrical power grid, at the same voltage and frequency of that power grid.

[Request Quote](#)



## **Grant Road Investment District**



Discover, analyze and download data from Grant Road Investment District. Download in CSV, KML, Zip, GeoJSON, GeoTIFF or PNG. Find API links for GeoServices, WMS, and WFS.

[Request Quote](#)



### [Does a grid-connected inverter need a grid to ...](#)

Normal operation of the grid: the grid-connected inverter can only work when the grid is in normal operation. If there is a grid failure or ...

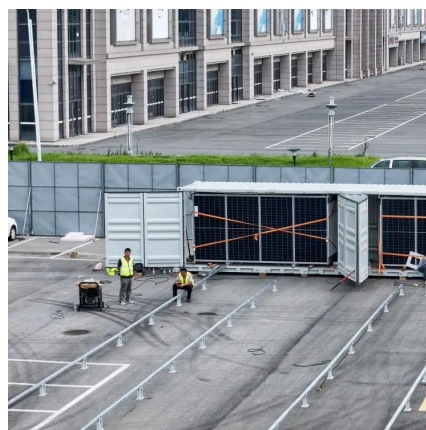
[Request Quote](#)



## CSS Grid Layout Guide

Our comprehensive guide to CSS grid, focusing on all the settings both for the grid parent container and the grid child elements.

[Request Quote](#)



## CSS Grid Handbook - Complete Guide to Grid Containers and Grid ...

A grid container (the large yellow area in the image) is an HTML element whose display property's value is grid or inline-grid. Grid items (the smaller boxes within the yellow ...

[Request Quote](#)



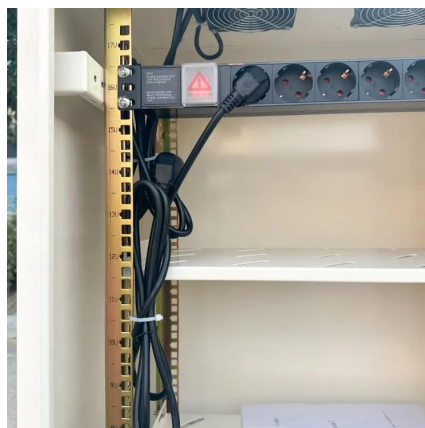
## A comprehensive review of grid-



## connected inverter topologies ...

This comprehensive review examines grid-connected inverter technologies from 2020 to 2025, revealing critical insights that fundamentally challenge industry assumptions ...

[Request Quote](#)



## [How Solar Inverter is Connected to the Grid](#)

Learn how solar inverter is connected to the grid and how each inverter functions when connected or not connected to the grid.

[Request Quote](#)



## Contact Us

---

For catalog requests, pricing, or partnerships, please visit:

<https://www.energyinnovationday.pl>

Phone: +48 22 335 1273

Email: [info@energyinnovationday.pl](mailto:info@energyinnovationday.pl)

Scan the QR code to contact us via WhatsApp.

