



# Is primary battery energy storage just discharge





## Overview

---

A primary cell or battery is one that cannot easily be recharged after one use, and are discarded following discharge. Most primary cells utilize electrolytes that are contained within absorbent material or a separator (i.e. no free or liquid electrolyte), and are thus.

A primary cell or battery is one that cannot easily be recharged after one use, and are discarded following discharge. Most primary cells utilize electrolytes that are contained within absorbent material or a separator (i.e. no free or liquid electrolyte), and are thus.

A primary battery or primary cell is a battery (a galvanic cell) that is designed to be used once and discarded, and it is not rechargeable unlike a secondary cell (rechargeable battery). In general, the electrochemical reaction occurring in the cell is not reversible, rendering the cell.

Electrochemical batteries are classified into 4 broad categories. A primary cell or battery is one that cannot easily be recharged after one use, and are discarded following discharge. Most primary cells utilize electrolytes that are contained within absorbent material or a separator (i.e. no free.

The most obvious is that primary batteries are single-use devices while secondary batteries can be recharged and used many times, but that's not the only difference. This FAQ starts with a general overview of the differences between primary and secondary batteries; it will then look at how specific.

Discharge curves for one cell of each of the seven main types of primary battery, in each case normalised over their working discharge life. Most batteries developed before about 1860 used cells in which two electrodes of metal or a metal compound were immersed in a liquid electrolyte, all housed.

How energy storage batteries discharge can be understood through several key processes. 1. Charge and discharge cycles define the battery's functionality, with specific chemistry impacting the rate and efficiency; 2. Internal resistance dictates how effectively the stored energy transitions to. Is a primary battery rechargeable?

A primary battery or primary cell is a battery (a galvanic cell) that is designed to be



used once and discarded, and it is not rechargeable unlike a secondary cell (rechargeable battery). In general, the electrochemical reaction occurring in the cell is not reversible, rendering the cell unchargeable.

Is a battery a primary or secondary battery?

**SECONDARY BATTERIES** Batteries are either primary or secondary. Primary batteries can be used only once because the chemical reactions that supply the current are irreversible. Secondary batteries, sometimes called storage batteries or accumulators, can be used, recharged, and reused.

Do different types of batteries deliver different amounts of energy?

So different types of battery are potentially able to deliver different amounts of energy, even though in all cases larger batteries can deliver more energy than smaller ones. That's why many of the different types are made in a range of physical sizes: D cells, C cells, AA and AAA cells, button cells and so on. But there's more to it than that.

What happens when a battery is used as a primary cell?

As a primary cell is used, chemical reactions in the battery use up the chemicals that generate the power; when they are gone, the battery stops producing electricity. In contrast, in a secondary cell, the reaction can be reversed by running a current into the cell with a battery charger to recharge it, regenerating the chemical reactants.



## Is primary battery energy storage just discharge



### Primary Cells & Batteries

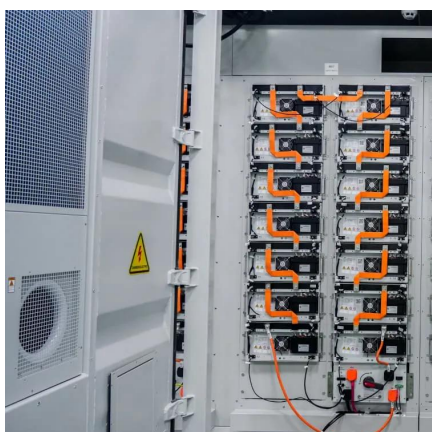
This is the familiar kind of battery which has a fixed amount of energy stored in it during manufacture, and once that energy has been used up the battery is simply thrown away and ...

[Request Quote](#)

### [Grid-Scale Battery Storage: Frequently Asked Questions](#)

Self-discharge occurs when the stored charge (or energy) of the battery is reduced through internal chemical reactions, or without being discharged to perform work for the grid or a ...

[Request Quote](#)



### Primary Battery

Primary cell batteries can only be discharged once, while secondary cell batteries can be discharged, recharged, and reused multiple times. Secondary battery cells perform reversible ...

[Request Quote](#)

### [How do energy storage batteries discharge?](#)

The operation of energy storage batteries is fundamentally based on the principles of charge and discharge cycles. Each battery ...

[Request Quote](#)



## Primary battery

A primary battery or primary cell is a battery (a galvanic cell) that is designed to be used once and discarded, and it is not rechargeable unlike a secondary cell (rechargeable battery).

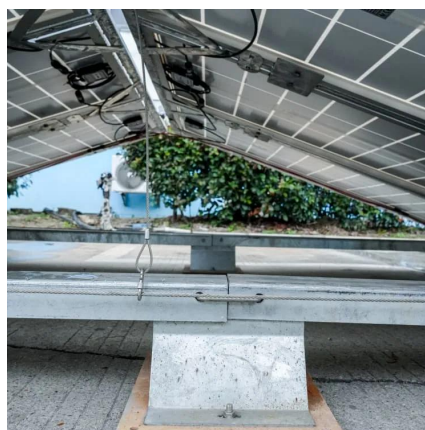
[Request Quote](#)



## PowerPoint Presentation

Chemical Battery is simply a device that allows energy to be stored in a chemical form and to be released when needed . Primary batteries only store energy and cannot be recharged.

[Request Quote](#)



## [How do energy storage batteries discharge? , NenPower](#)

The operation of energy storage batteries is fundamentally based on the principles of charge and discharge cycles. Each battery employs a specific chemistry, such as lithium ...

[Request Quote](#)



## DOE Explains Batteries



Once charged, the battery can be disconnected from the circuit to store the chemical potential energy for later use as electricity. Batteries were invented in 1800, but their complex chemical ...

[Request Quote](#)



### The difference between primary and secondary ...

Since they cannot be recharged, primary batteries are designed to have very low self-discharge rates. Self-discharge is the loss of charge ...

[Request Quote](#)



## Primary Battery

Primary batteries, also known as disposable batteries, are defined as batteries in which the electrochemical reaction is not reversible, requiring replacement once the electrode or ...

[Request Quote](#)



### Classification of Cells or Batteries

Electrochemical batteries are classified into 4 broad categories. A primary cell or battery is one that cannot easily be recharged after one use, and ...

[Request Quote](#)



## The difference between primary and



## secondary battery chemistries

Since they cannot be recharged, primary batteries are designed to have very low self-discharge rates. Self-discharge is the loss of charge on a battery that is not being used.

[Request Quote](#)



## [Classification of Cells or Batteries](#)

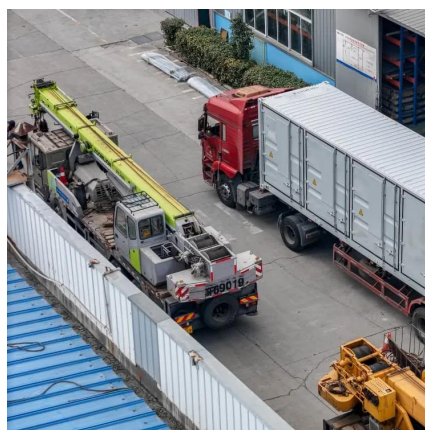
Electrochemical batteries are classified into 4 broad categories. A primary cell or battery is one that cannot easily be recharged after one use, and are discarded following discharge.

[Request Quote](#)

## DOE Explains Batteries

Once charged, the battery can be disconnected from the circuit to store the chemical potential energy for later use as electricity. Batteries were ...

[Request Quote](#)





## Contact Us

---

For catalog requests, pricing, or partnerships, please visit:

<https://www.energyinnovationday.pl>

Phone: +48 22 335 1273

Email: [info@energyinnovationday.pl](mailto:info@energyinnovationday.pl)

Scan the QR code to contact us via WhatsApp.

