



# Iron Fall Flow Battery





## Overview

---

The Iron Redox Flow Battery (IRFB), also known as Iron Salt Battery (ISB), stores and releases energy through the electrochemical reaction of iron salt. This type of battery belongs to the class of (RFB), which are alternative solutions to (LIB) for stationary applications. The IRFB can achieve up to 70% round trip . In comparison, other long duration storage technologies such as pumped hydro energy storage pr.

An iron flow battery is an energy storage system that uses iron ions in a liquid electrolyte to store and release electrical energy. This technology enables the efficient production and consumption of renewable energy sources by providing grid stability and balancing energy supply and.

An iron flow battery is an energy storage system that uses iron ions in a liquid electrolyte to store and release electrical energy. This technology enables the efficient production and consumption of renewable energy sources by providing grid stability and balancing energy supply and.

Iron-flow batteries address these challenges by combining the inherent advantages of redox flow technology with the cost-efficiency of iron. Unlike solid-state batteries, flow batteries separate energy storage from power delivery, allowing for independent scalability, longer lifetimes, and reduced.

Our iron flow batteries work by circulating liquid electrolytes — made of iron, salt, and water — to charge and discharge electrons, providing up to 12 hours of storage capacity. ESS Tech, Inc. (ESS) has developed, tested, validated, and commercialized iron flow technology since 2011. ESS' iron.

Researchers at the Pacific Northwest National Laboratory have created a new iron flow battery design offering the potential for a safe, scalable renewable energy storage system. In the 1970s, scientists at the National Aeronautics and Space Administration (NASA) developed the first iron flow.

A commonplace chemical used in water treatment facilities has been repurposed for large-scale energy storage in a new battery design by researchers at the Department of Energy's Pacific Northwest National Laboratory. The design provides a pathway to a safe, economical, water-based, flow battery.

The Iron Redox Flow Battery (IRFB), also known as Iron Salt Battery (ISB), stores



and releases energy through the electrochemical reaction of iron salt. This type of battery belongs to the class of redox-flow batteries (RFB), which are alternative solutions to Lithium-Ion Batteries (LIB) for.

Among them, iron-based aqueous redox flow batteries (ARFBs) are a compelling choice for future energy storage systems due to their excellent safety, cost-effectiveness and scalability. However, the advancement of various types of iron-based ARFBs is hindered by several critical challenges.



## Iron Fall Flow Battery



### Iron redox flow battery

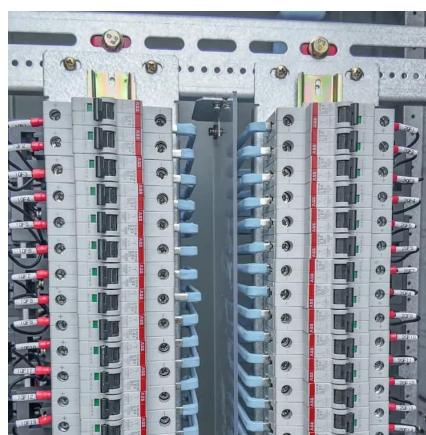
This type of battery belongs to the class of redox-flow batteries (RFB), which are alternative solutions to Lithium-Ion Batteries (LIB) for stationary applications.

[Request Quote](#)

### [Iron Flow Battery technology and its role in Energy Storage](#)

Iron flow battery-based storage solutions have recently made a historical breakthrough to counter some of the disadvantages of lithium-ion battery solutions. They offer ...

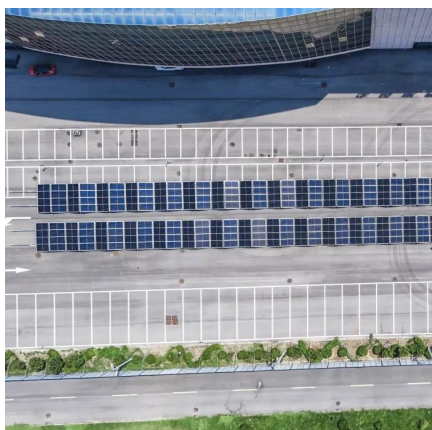
[Request Quote](#)



### [New Iron Flow Battery Promises Safe, Scalable ...](#)

Researchers at the Pacific Northwest National Laboratory have created a new iron flow battery design offering the potential for a safe, ...

[Request Quote](#)



### Target locations in Summit County, OH (Akron, Cuyahoga Falls, ...)

Target locations in Summit County, OH (Akron, Cuyahoga Falls, Fairlawn, Northfield, Stow)

[Request Quote](#)



### Target locations in Broward County, FL (Coral Springs, Deerfield ...

Target locations in Broward County, FL (Coral Springs, Deerfield Beach, Davie, Fort Lauderdale, )

[Request Quote](#)



### Target locations in Nassau County, NY (Farmingdale, Hicksville

Target locations in Nassau County, NY (Farmingdale, Hicksville, Levittown, Valley Stream, Westbury)

[Request Quote](#)



### Home

Developed using an advanced metal complex and membrane, Iron-Flow Batteries is based at the Paris Flow Tech platform - a premier hub for ...

[Request Quote](#)



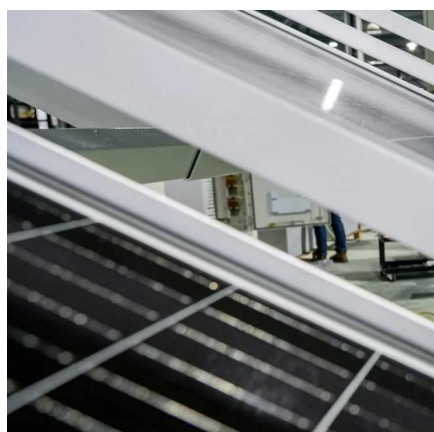
### Target locations in Johnson County,



## KS (Overland Park, Olathe, ...)

This store is conveniently located between my work and home. Also use this store for Pharmacy. Appreciate them throwing some Grocery in also recently. Saves me a trip to a competitive ...

[Request Quote](#)



## New Iron Flow Battery Promises Safe, Scalable Energy Storage

Researchers at the Pacific Northwest National Laboratory have created a new iron flow battery design offering the potential for a safe, scalable renewable energy storage system.

[Request Quote](#)

## Target locations in Suffolk County, NY (Commack, Bay Shore, ...)

Target locations in Suffolk County, NY (Commack, Bay Shore, Centereach, Central Islip, )

[Request Quote](#)



## Iron redox flow battery

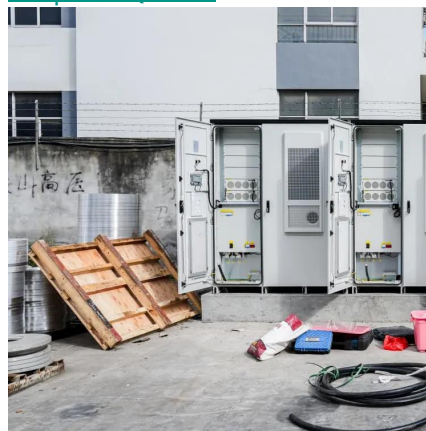
Overview  
Science Advantages and Disadvantages  
Application History

The Iron Redox Flow Battery (IRFB), also known as Iron Salt Battery (ISB), stores and releases energy through the electrochemical reaction of iron salt. This type of battery belongs to the class of redox-flow batteries (RFB), which are alternative solutions to Lithium-Ion Batteries (LIB) for stationary applications. The IRFB can achieve up to 70% round trip energy efficiency. In comparison, other long duration storage



technologies such as pumped hydro energy storage pr...

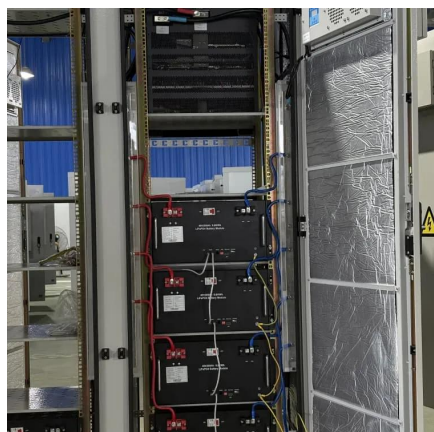
[Request Quote](#)



## Iron Flow Battery: How It Works and Its Role in Revolutionizing ...

An iron flow battery is an energy storage system that uses iron ions in a liquid electrolyte to store and release electrical energy. This technology enables the efficient ...

[Request Quote](#)



## Target locations in Tarrant County, TX (Arlington, Euless, ...

Target locations in Tarrant County, TX (Arlington, Euless, Grapevine, Hurst, )

[Request Quote](#)

## [Iron Flow Battery technology and its role in Energy ...](#)

Iron flow battery-based storage solutions have recently made a historical breakthrough to counter some of the disadvantages of lithium ...

[Request Quote](#)



## Home

Developed using an advanced metal complex and membrane, Iron-Flow Batteries is based at the Paris Flow Tech platform - a premier hub for innovation in continuous flow chemistry.

[Request Quote](#)



## Aqueous iron-based redox flow batteries for large-scale energy ...

By offering insights into these emerging directions, this review aims to support the continued research and development of iron-based flow batteries for large-scale energy ...

[Request Quote](#)



## [Iron Flow Batteries: What Are They and How Do They Work?](#)

Iron flow batteries are a type of energy storage technology that uses iron ions in an electrolyte solution to store and release energy. They are a relatively new technology, but they ...

[Request Quote](#)

## Iron Flow Battery , ARPA-E

The ESS flow battery technology is distinguished by its cost-effective electrolytes, based on earth-abundant iron, and its innovative battery hardware design that dramatically ...

[Request Quote](#)



## Target locations in San Joaquin



## County, CA (Stockton, Lathrop, ...

Target locations in San Joaquin County, CA (Stockton, Lathrop, Lodi, Manteca, Tracy)

[Request Quote](#)



## Iron Flow Chemistry

Our iron flow batteries work by circulating liquid electrolytes -- made of iron, salt, and water -- to charge and discharge electrons, providing up to 12 hours of storage capacity. ESS Tech, Inc. ...

[Request Quote](#)



## [Iron Flow Batteries: What Are They and How Do ...](#)

Iron flow batteries are a type of energy storage technology that uses iron ions in an electrolyte solution to store and release energy. ...

[Request Quote](#)



## Target locations in Pinellas County, FL (Clearwater, Kenneth City

Target locations in Pinellas County, FL (Clearwater, Kenneth City, Largo, Lealman, )

[Request Quote](#)



## [New all-liquid iron flow battery for grid](#)



## [energy storage](#)

A new iron-based aqueous flow battery shows promise for grid energy storage applications.

[Request Quote](#)

## **Target locations in St. Louis County, MO (Chesterfield, Ballwin**

Target locations in St. Louis County, MO  
(Chesterfield, Ballwin, Brentwood, Bridgeton, )

[Request Quote](#)





## Contact Us

---

For catalog requests, pricing, or partnerships, please visit:

<https://www.energyinnovationday.pl>

Phone: +48 22 335 1273

Email: [info@energyinnovationday.pl](mailto:info@energyinnovationday.pl)

Scan the QR code to contact us via WhatsApp.

