

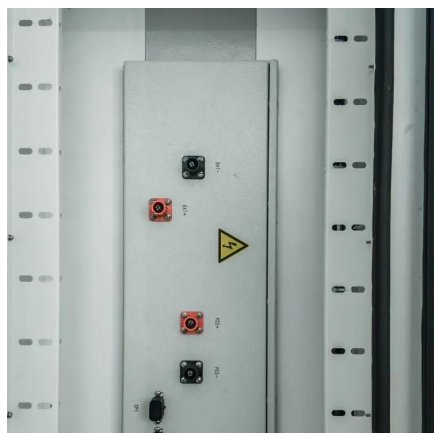


# Inverter maximum power





## Inverter maximum power



### Solar Inverter Specifications

The following specifications reflect Tesla Solar Inverter with Site Controller (Tesla P/N 1538000-45-y). For specifications on Tesla Solar Inverter without Site Controller, see Tesla Solar ...

[Request Quote](#)

### [Technical Note: Oversizing of SolarEdge Inverters](#)

Inverters are designed to generate AC output power up to a defined maximum which cannot be exceeded. The inverter limits or clips the power output when the actual produced DC power is ...

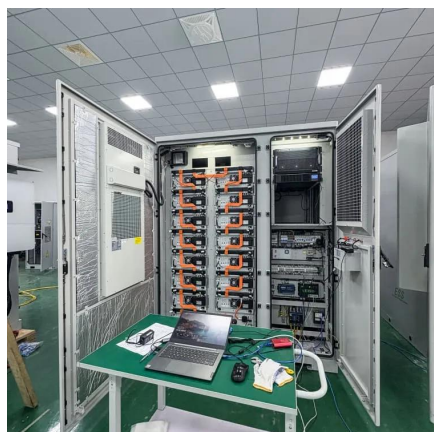
[Request Quote](#)



### [Inverter Specifications and Data Sheet](#)

This is also known as the surge power; it is the maximum power that an inverter can supply for a short time. For example, some appliances with electric motors require a much higher power on ...

[Request Quote](#)

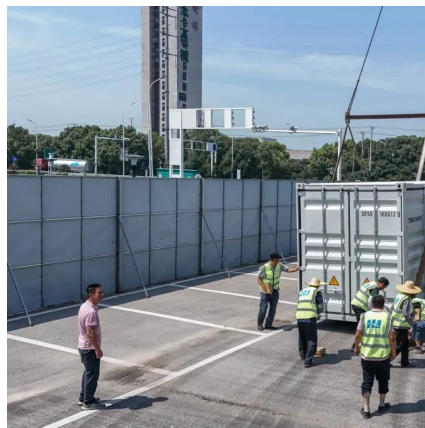


### Interpreting inverter datasheet and main parameters , AE 868

Each inverter comes with a maximum recommended PV power, or sometimes is referred to as "DC-AC Capacity factor," which is defined as the percentage of DC power over the inverter's ...



[Request Quote](#)



## **Inverter Peak Power vs Rated Power: What it is and Why It Matters**

The inverter's rated power is the maximum power it can sustain and safely output. If an appliance is run over this power, it will cause the inverter to overload, automatically cut ...

[Request Quote](#)



## **How to Calculate the Maximum Output Power of a Power Inverter**

In this article, we go over how to calculate the maximum output power of a power inverter from the DC battery supplying it.

[Request Quote](#)



## **[Everything You Need to Know About Inverter Sizing](#)**

Inverter clipping occurs when an inverter output is exceeded by the power input. For example, if you pair an IQ-8M inverter with a 430W DC panel, the maximum power output ...

[Request Quote](#)



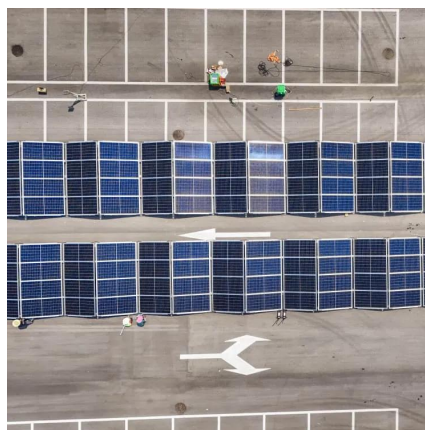
## **[Maximizing Inverter Output in Solar PV](#)**



## Systems

Q: What factors affect the maximum power output of an inverter? A: The maximum power output of an inverter is affected by several factors, including the number of solar cells in ...

[Request Quote](#)



## **Max inverter power questions**

At maximum power, the power factor rating of the inverter is 0.8, this gives the ratio between the VA rating and the active power rating. So the inverter power rating depends on ...

[Request Quote](#)

## **Max inverter power questions**

At maximum power, the power factor rating of the inverter is 0.8, this gives the ratio between the VA rating and the active power rating. ...

[Request Quote](#)



## Inverter Peak Power vs Rated Power: What it is ...

The inverter's rated power is the maximum power it can sustain and safely output. If an appliance is run over this power, it will ...

[Request Quote](#)

## **What size inverter do I need?**



Every inverter is defined by two primary power specifications: continuous power and peak power. A nuanced understanding of these ratings is the first and most crucial step in the ...

[Request Quote](#)





## Contact Us

---

For catalog requests, pricing, or partnerships, please visit:

<https://www.energyinnovationday.pl>

Phone: +48 22 335 1273

Email: [info@energyinnovationday.pl](mailto:info@energyinnovationday.pl)

Scan the QR code to contact us via WhatsApp.

