



Installation of double-glass components on sloping roofs





Overview

Self-supporting solutions can be installed between 25-60°, on either an upstand (on a flat roof) or as a non-protruding installation in a sloped roof. Furthermore, it is possible to install a dual pitched solution with a girder at the ridge.

Self-supporting solutions can be installed between 25-60°, on either an upstand (on a flat roof) or as a non-protruding installation in a sloped roof. Furthermore, it is possible to install a dual pitched solution with a girder at the ridge.

Dual pitched solutions are two rows of VELUX Glazing Panels connected at the top, creating a ridge. Self-supporting solutions can be installed between 25-60°, on either an upstand (on a flat roof) or as a non-protruding installation in a sloped roof. Furthermore, it is possible to install a dual.

When installing a Polyglass self-adhered roofing system for a steep-sloped roof, a few essential tools are required: On steep-slope roofing systems, the roof field is the area where you'll install most of the other roofing details, such as flashing and valleys. Installing a roof field will give you.

Note: DĀLYTE follows LEAN principles of continuous improvement in its work and reserves the right to make improvements. If you have any questions do not hesitate to reach out to DĀLYTE for assistance. It is very important to check and double-check that the curb dimensions match the Submittal Shop.

meter edges. Metal flashings are typical s e s ; 1 ght to left. Carefully hand-press the sheet into place, avoiding wrinkles and trapped air while maintaining proper degree angle. Install the upper portion of the roll just as the bottom half was installed, working from the center of the.

Sloped roofs are a popular architectural feature due to their aesthetic appeal and functional advantages. They offer efficient water drainage, better insulation, and often, enhanced durability. However, installing and maintaining a sloped roof comes with its own set of challenges. This blog post.

A VELUX Commercial glass roof system is a daylight solution available in a variety of design configurations and can meet specifications of any commercial building project. Suitable for both flat and sloped roofs, glass roof systems can be installed



to optimize the amount of daylight that enters a.



Installation of double-glass components on sloping roofs



Polystick® P HT: A Professional Guide to Installing Valleys and ...

Learn how Polystick® P HT high-temp underlayment protects steep-slope roofs. Ideal for metal roofs, valleys, & drip edges. Reliable, self-adhered durability.

[Request Quote](#)

Roof Glazing

Creating a light well by using glass in the roof is a popular way of introducing light to central areas of a building. In addition to the normal considerations ...

[Request Quote](#)



[Polystick® P HT: A Professional Guide to Installing ...](#)

Learn how Polystick® P HT high-temp underlayment protects steep-slope roofs. Ideal for metal roofs, valleys, & drip edges. Reliable, ...

[Request Quote](#)



[Dual pitched solutions , VELUX Commercial](#)

VELUX Glazing Panel specialists offer support throughout design, specification and installation, including a project specific sub-construction drawing with measurements for the outer geometry.



[Request Quote](#)



[GABLED RIDGE Structural Skylight Installation Instructions](#)

To ensure that it gives you many years of high-performance service, it is important that before commencing any work, you read these instructions fully and ensure that they are ...

[Request Quote](#)

Roofing Solutions for Sloped Roofs: Tips for Installation and ...

This blog post will provide comprehensive tips on roofing solutions for sloped roofs, covering installation, material choices, and ongoing maintenance to ensure longevity ...

[Request Quote](#)



INSTRUCTIONS

Apply asphalt primer to the top 6" (152 mm) of the LIBERTY™ Cap Sheet, allow to dry, and install another course(s) of LIBERTY™ Cap Sheet, and secure each course with roofing nails ...

[Request Quote](#)

[Dual pitched solutions , VELUX](#)



[Commercial](#)

VELUX Glazing Panel specialists offer support throughout design, specification and installation, including a project specific sub-construction ...

[Request Quote](#)



[\[Video\] Steep-Slope Details Installation Guide](#)

Our steep-slope detail installation guides below outline the steps required for installing different details using our range of roofing products and membranes. When installing ...

[Request Quote](#)



INSTALLATION GUIDE

Prior to the application, be sure to properly prepare the substrate. In re-roofing applications, be sure to remove existing materials and obsolete penetrations and repair any voids or ...

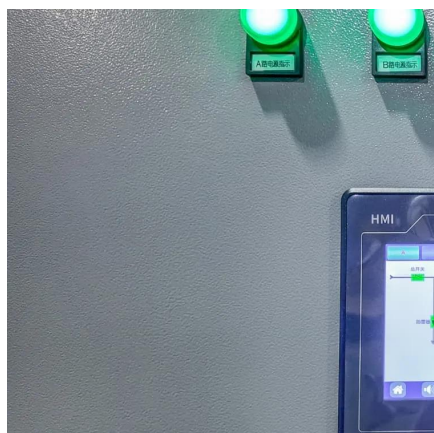
[Request Quote](#)



[Glass roof solutions in commercial buildings , Q& A ...](#)

Suitable for both flat and sloped roofs, glass roof systems can be installed to optimize the amount of daylight that enters a space. Double or triple ...

[Request Quote](#)



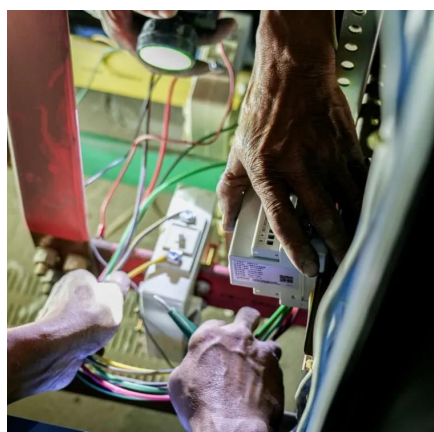
[Glass roof solutions in commercial](#)



[buildings , Q& A Blog](#)

Suitable for both flat and sloped roofs, glass roof systems can be installed to optimize the amount of daylight that enters a space. Double or triple glazing panels are available as part of a new ...

[Request Quote](#)



[Installation of double-glass components on sloping roofs](#)

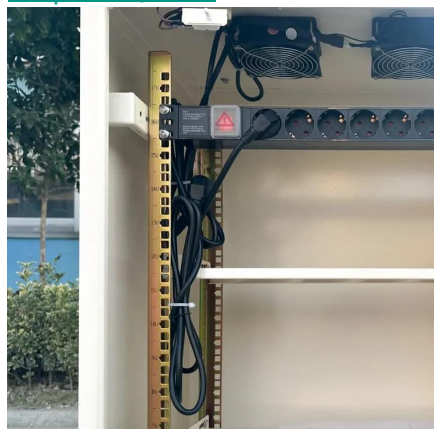
Suitable for both flat and sloped roofs, glass roof systems can be installed to optimize the amount of daylight that enters a space. Double or triple glazing panels are available as part of a new ...

[Request Quote](#)

[\[Video\] Steep-Slope Details Installation Guide](#)

Our steep-slope detail installation guides below outline the steps required for installing different details using our range of roofing products and membranes. When installing a Polyglass self-adhered roofing system for a steep-sloped roof, a few essential tools are required:

[Request Quote](#)



Roof Glazing

Creating a light well by using glass in the roof is a popular way of introducing light to central areas of a building. In addition to the normal considerations of thermal and solar control, sloping ...

[Request Quote](#)



Contact Us

For catalog requests, pricing, or partnerships, please visit:

<https://www.energyinnovationday.pl>

Phone: +48 22 335 1273

Email: info@energyinnovationday.pl

Scan the QR code to contact us via WhatsApp.

