



Huawei s 4G solar container communication station inverter is connected to the grid





Overview

Via 4G connection, Smart Dongle supports up to 10 inverters to communicate with the solar management system through hassle-free plug and play. Once plugged in, the WLAN access point can be used for local deployment to realize intelligent power management and plant maintenance.

Via 4G connection, Smart Dongle supports up to 10 inverters to communicate with the solar management system through hassle-free plug and play. Once plugged in, the WLAN access point can be used for local deployment to realize intelligent power management and plant maintenance.

Code scanning: Tap Connect to access the scanning screen, place the QR code or bar code of the solar inverter in the scan frame. The device will be automatically connected after the code is identified. During the login, if five consecutive invalid password entries are made (the interval between two).

The app can Huawei be locally connected to the inverter and remotely connected to the FusionSolar Smart PV Management System. Power distribution Prepared by the customer Device unit supplier Issue 02 (2021-11-25) Copyright © Huawei Technologies Co., Ltd. Page 14 M0.

Smart power sensor DDSU666-H is connected at the grid connection point for exported power measurement to calculate self-consumption rate and power export control. When connecting smart energy center to one phase of three phase grid, DTSU666 smart power sensor shall be used Single phase backup box.

Update 2025: As far as known all Huawei SUN2000 inverters with communication possibilities are supported. If you connect your energy meter to Huawei inverter, the controller will be able to read the grid data. We recommend doing a factory reset of the Huawei inverter before adding it to the.

Imagine your solar installation as a symphony orchestra - Huawei's photovoltaic inverters act as both conductor and first violin, with communication interfaces serving as the invisible sheet music coordinating every instrument. These digital pathways have become the unsung heroes in modern solar.

Via 4G connection, Smart Dongle supports up to 10 inverters to communicate with



the solar management system through hassle-free plug and play. Once plugged in, the WLAN access point can be used for local deployment to realize intelligent power management and plant maintenance. Both FusionSolar. Can Huawei be locally connected to the inverter and remotely connected?

The app can Huawei be locally connected to the inverter and remotely connected to the FusionSolar Smart PV Management System. Power distribution Prepared by the customer Device unit supplier Issue 02 (2021-11-25) Copyright © Huawei Technologies Co., Ltd. Page 14 M0, SUN2000-50KTL/SUN2000-63KTL-JPM0, or SUN2000-50KTL-JPM1.

What is the Huawei Smart Dongle?

The Huawei Smart Dongle, referred to as the 'Dongle' for short, is a smart communications expansion module that works with Huawei inverters to implement wireless communication between inverters and management systems through the 4G network or WLAN/FE. Each dongle can connect to 10 devices (1 Master and 9 Slaves).

How does fusion Solar Smart PV management system connect to a router?

The inverter connects to the router through the WLAN Smart Dongle, and then connects to the FusionSolar Smart PV Management System through the router. FusionSolar Smart PV Management System Connection User Manual (Inverters + SDongleA) 2 Introduction to the Solution Issue 02 (2021-11-25) Copyright © Huawei Technologies Co., Ltd. 4.

How many inverters can a smart dongle support?

Via 4G connection, Smart Dongle supports up to 10 inverters to communicate with the solar management system through hassle-free plug and play. Once plugged in, the WLAN access point can be used for local deployment to realize intelligent power management and plant maintenance.



Huawei s 4G solar container communication station inverter is connect



Smart Dongle 4G/WLAN-FE

Smart Dongle (the "Dongle" for short) is a smart communications expansion module that works with Huawei inverters to implement wireless communication between inverters and ...

[Request Quote](#)

Huawei Smart Dongle-4G

Via 4G connection, Smart Dongle supports up to 10 inverters to communicate with the solar management system through hassle-free plug and play. Once plugged in, the WLAN access ...

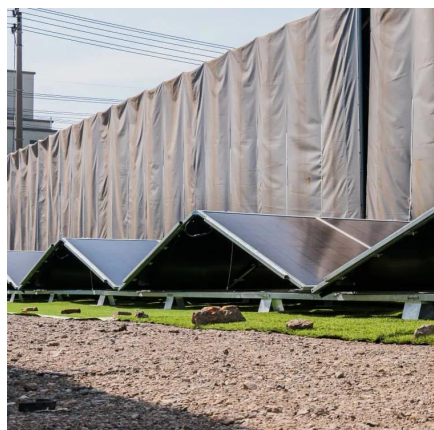
[Request Quote](#)



Smart Dongle 4G/WLAN-FE

Smart Dongle (the "Dongle" for short) is a smart communications expansion module that works with Huawei inverters to implement wireless ...

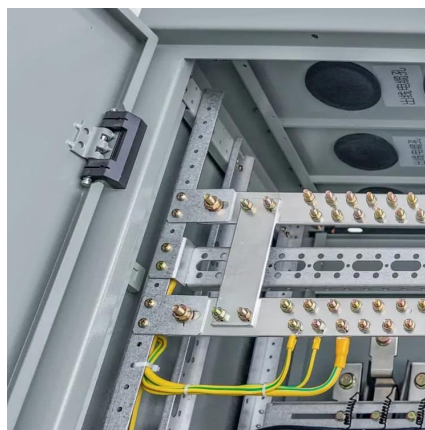
[Request Quote](#)



4G Communication Networking

This document describes how to connect inverters to the Smart PV Management System through the Smart Dongle.

[Request Quote](#)



How to Connect a Huawei Photovoltaic Inverter to the Grid: A

...

This guide explains how to safely integrate Huawei photovoltaic inverters into your power network, whether for residential or commercial use. We'll cover technical requirements, compliance ...

[Request Quote](#)



HUAWEI Smart Dongle-4G - Advanced

SDongleA) User Manual (Inverters

This document describes how to connect inverters to the FusionSolar Smart PV Management System through the Smart Dongle. For details about the installation of each device, see the ...

[Request Quote](#)



[HUAWEI SDONGLEA-01 USER MANUAL Pdf](#)

...

When the inverter is directly connected, Closed-loop controller to Inverter. When the SmartLogger is connected, set Closed-loop controller to ...

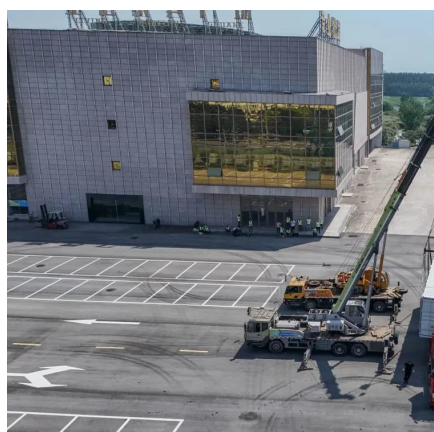
[Request Quote](#)



4G Communication Solution for Solar

HUAWEI Smart Dongle-4G is an advanced communication device designed to enable solar inverter connection to become more advanced. With the support of stable and fast 4G wireless ...

[Request Quote](#)



Decoding Huawei's Photovoltaic Inverter Communication Interfaces

A recent field study in Bavaria's solar farm revealed something counterintuitive - Huawei inverters using PLC communication actually outperformed wired connections during thunderstorms.

[Request Quote](#)

[Huawei SUN2000 inverters, SmartgridOne Documentation](#)

Update 2025: As far as known all Huawei SUN2000 inverters with communication possibilities are supported. If you connect your energy meter to Huawei inverter, the controller will be able to ...

[Request Quote](#)



[HUAWEI Smart Dongle-4G - Advanced 4G Communication ...](#)

HUAWEI Smart Dongle-4G is an advanced communication device designed to enable solar inverter connection to become more advanced. With the support of stable and fast 4G wireless ...

[Request Quote](#)

[HUAWEI SDONGLEA-01 USER MANUAL Pdf](#)



[Download , ManualsLib](#)

When the inverter is directly connected, Closed-loop controller to Inverter. When the SmartLogger is connected, set Closed-loop controller to SDongle/SmartLogger. For multiple inverters, ...

[Request Quote](#)



Huawei Webinar Welcome for PPT

On-grid mode: Smart energy center connects directly to the grid. Both critical load and non-critical load are connected to the grid and can be powered up. Backup mode: When grid is outage, ...

[Request Quote](#)



Contact Us

For catalog requests, pricing, or partnerships, please visit:

<https://www.energyinnovationday.pl>

Phone: +48 22 335 1273

Email: info@energyinnovationday.pl

Scan the QR code to contact us via WhatsApp.

