



Huawei inverter 48v to 220v





Overview

What is a 48 watt inverter?

48V 2000W power inverter with universal socket and USB port, modified sine wave or pure sine wave output waveform are available. Option for 110V/120V or 220V/230V/240V AC 50Hz/60Hz, suitable DC to AC inverter for home use to charge TV, laptop, fans, lights and other appliances. Storage temperature of this 2000 watt inverter between -30 °C to +70 °C.

What is the working temperature of a 48V 5000W inverter?

Working temperature of this 48V 5000W inverter between -10 °C to 50 °C. A 48V power inverter is a device used to convert direct current (DC) electrical power from a 48-volt battery or DC power source into alternating current (AC) power. In terms of functionality, a 48V power inverter typically consists of several key components.

How does a 48V power inverter work?

In terms of functionality, a 48V power inverter typically consists of several key components. These include a DC input, an inverter circuit that converts DC to AC power, control electronics for regulating the output voltage and frequency, and output sockets or terminals to connect AC-powered devices.

What voltages can a 5000W inverter run?

Optional AC output with 100V, 110V, 120V, 220V, 230V, 240V. 5000W modified sine wave power inverter equipped with universal household socket and USB port to meet your multi-needs, most desirable power source on the road. Working temperature of this 48V 5000W inverter between -10 °C to 50 °C.



Huawei inverter 48v to 220v



[48v dc to 230v 220v ac inverters 240v](#)

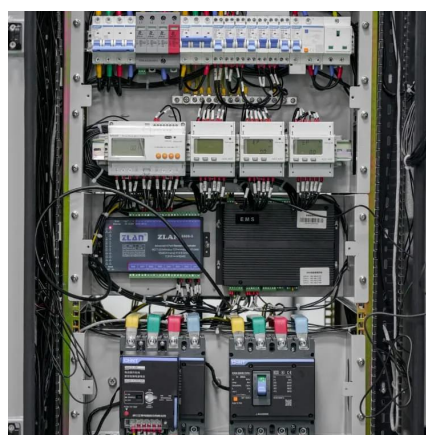
When the inverter has no low-voltage battery alarm, even if the mains power input is normal, the inverter will switch to the battery mode, and the battery will supply power to the load.

[Request Quote](#)

[48v Inverter, 48v DC to 120v/220v AC Power ...](#)

This modified sine wave inverter outputs 110V/220V AC 50Hz/60Hz, comes with durable housing and temperature-controlled cooling fan, excellent ...

[Request Quote](#)



[800 Watt Modified Sine Wave Inverter, 48VDC to 220VAC](#)

The 800W modified sine wave inverter, converting 48VDC to 220VAC with an output power of 800W and a peak power of 1600W, this inverter efficiently converts DC power from a 48V ...

[Request Quote](#)

[10.2KW 220Vac 48Vdc All In One Inverter Charger](#)

10.2KW pure sine wave inverter with up to 95% efficiency seamlessly converts 48V DC to 220V AC power and vice versa. Compatible with the grid, solar panels, and generators, it offers ...



[Request Quote](#)



[Huawei I23003G1 Inverter Module I23002G1](#)

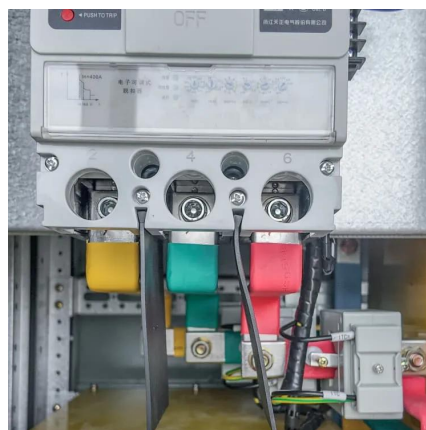
Huawei I23002G1 inverter high-efficiency module 48v to 220V communication embedded power supply.

[Request Quote](#)

[Solar 48V Inverters For Sale , 48v DC to 220v AC](#)

These Solar 48V Inverters have been designed for versatility, providing options to efficiently power your appliances at either 110V/120V or 220V/230V/240V outputs.

[Request Quote](#)



Amazon : 48v To 220v Inverter

10200W Solar Inverter, 48V DC to 220-230V AC, Off Grid Pure Sine Wave Solar Inverter with 160A MPPT Charge Controller, Max PV Array 5400W, for Home, RV, for 48V Lead Acid & ...

[Request Quote](#)

[10.2KW Solar Hybrid Inverter All in One.](#)



[48V DC ...](#)

This inverter features single-phase 220V output and does not directly supply 110V/120V power. It is not compatible with 120V-only ...

[Request Quote](#)



[48v dc to 230v 220v ac inverters 240v](#)

When the inverter has no low-voltage battery alarm, even if the mains power input is normal, the inverter will switch to the battery mode, and the ...

[Request Quote](#)

[Huawei I23003G1 Inverter Module 48V To 220V ...](#)

A: We are a professional supplier of Huawei, Emerson and ZTE power ...

[Request Quote](#)



48v Inverter, 48v DC to 120v/220v AC Power Inverter , inverter

This modified sine wave inverter outputs 110V/220V AC 50Hz/60Hz, comes with durable housing and temperature-controlled cooling fan, excellent quality and high stability.

[Request Quote](#)

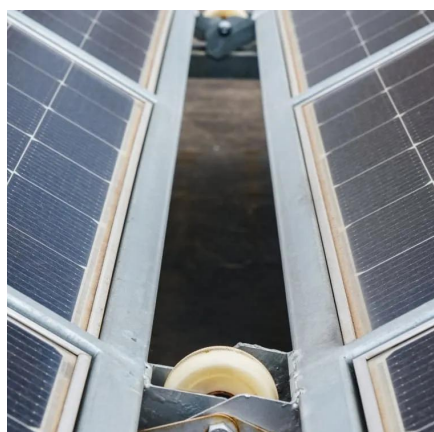
Huawei I23003G1 Inverter Module



48V To 220V For Embedded ...

A: We are a professional supplier of Huawei, Emerson and ZTE power supply modules, embedded power systems and rectifier modules with original packaging and technical service ...

[Request Quote](#)



[10.2KW 220Vac 48Vdc All In One Inverter Charger ...](#)

10.2KW pure sine wave inverter with up to 95% efficiency seamlessly converts 48V DC to 220V AC power and vice versa. Compatible with the ...

[Request Quote](#)

[800 Watt Modified Sine Wave Inverter, 48VDC to ...](#)

The 800W modified sine wave inverter, converting 48VDC to 220VAC with ...

[Request Quote](#)



Inverter 48V 220V

With its compact design and durable build, this inverter is built to withstand harsh environments, making it suitable for both indoor and outdoor use. Moreover, the inverter 48v 220v is ...

[Request Quote](#)

10.2KW Solar Hybrid Inverter All in



One, 48V DC to 220V-230V ...

This inverter features single-phase 220V output and does not directly supply 110V/120V power. It is not compatible with 120V-only appliances, nor does it support parallel ...

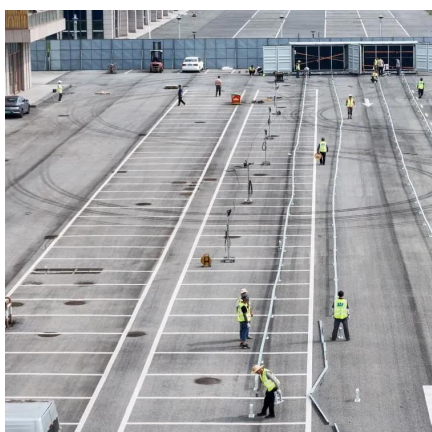
[Request Quote](#)



[Huawei I23003G1 Inverter Module I23002G1](#)

Huawei I23002G1 inverter high-efficiency module 48v to 220V communication embedded power supply.

[Request Quote](#)





Contact Us

For catalog requests, pricing, or partnerships, please visit:

<https://www.energyinnovationday.pl>

Phone: +48 22 335 1273

Email: info@energyinnovationday.pl

Scan the QR code to contact us via WhatsApp.

