



How to test the current of the battery cabinet





Overview

This guide will walk you through various methods to ensure your sensor is functioning correctly, providing accurate readings for your battery's current draw. We'll cover both basic checks and more advanced troubleshooting techniques. Before diving into testing, let's.

This guide will walk you through various methods to ensure your sensor is functioning correctly, providing accurate readings for your battery's current draw. We'll cover both basic checks and more advanced troubleshooting techniques. Before diving into testing, let's.

The voltage method is one of the most basic battery capacity testing methods. By measuring the voltage across the battery, its remaining capacity can be preliminarily estimated. The constant current discharge method is a more accurate battery capacity test method. Connect the battery to a certain.

A battery current sensor, often part of an Intelligent Battery Sensor (IBS) or Battery Monitoring System (BMS), is an electronic device designed to measure the flow of electrical current into and out of the vehicle's 12-volt battery. This sensor is typically a Hall effect device or a shunt resistor.

In this guide, we'll walk you through the steps to test any battery with a multimeter, helping you achieve accurate results and maintain the reliability of your devices. To ensure accurate and effective battery testing, follow these initial steps: Determine the battery type (e.g., AA, AAA).

What type of batteries are used in energy storage cabinets?

Lithium batteries have become the most commonly used battery type in modern energy storage cabinets due to their high energy density, long life, low self-discharge rate and fast charge and discharge speed. What is a typical battery.

Testing a battery current sensor might seem daunting, but with the right approach and understanding, it's a straightforward process. This guide will walk you through various methods to ensure your sensor is functioning correctly, providing accurate readings for your battery's current draw. We'll.



Battery tests can easily be performed via the PCD front panel, WinPCD T2 Software and SCADA. Call 1-800-929-7947 option 5 or +1-407-732-2000 extension 2510 for this issue or any other questions. Precautions 1. DO NOT SHORT CIRCUIT BATTERIES 2. Avoid deep cycling discharge of batteries 3. Ensure.



How to test the current of the battery cabinet



[Learn How to Test a Battery Using a Multimeter](#)

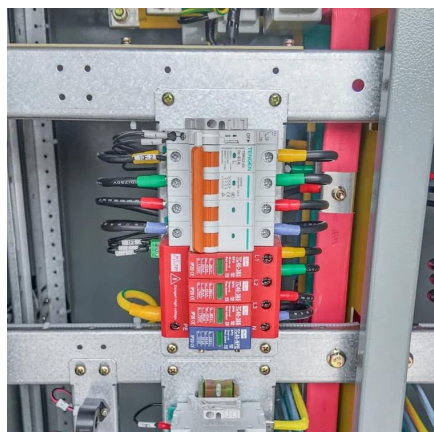
To measure the current, one must create a circuit where the multimeter is in series with the battery and a load. A resistor has a fixed resistance (assuming temperature remains ...

[Request Quote](#)

[How to Test a Battery Current Sensor](#)

Accurately test your battery current sensor to diagnose electrical charging problems and persistent parasitic draws.

[Request Quote](#)



Ultimate Guide: How to Test Any Battery with a Multimeter for ...

In this guide, we'll walk you through the steps to test any battery with a multimeter, helping you achieve accurate results and maintain the reliability of your devices.

[Request Quote](#)

[How To Test A Battery Current Sensor](#)

By following this comprehensive guide, you'll be well-equipped to test and troubleshoot your battery current sensor effectively, ensuring reliable monitoring of your battery system.

[Request Quote](#)



[How to test the current and voltage of the battery cabinet](#)

The voltage method is one of the most basic battery capacity testing methods. By measuring the voltage across the battery, its remaining capacity can be preliminarily estimated. The constant ...

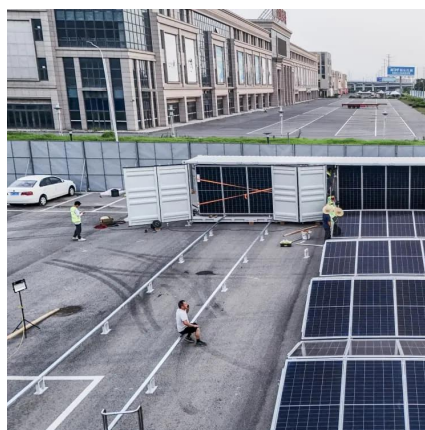
[Request Quote](#)



[How to Check Battery Amps with a Multimeter](#)

Learn how to check battery amps with a multimeter. A step-by-step guide to ensure accurate readings and battery health.

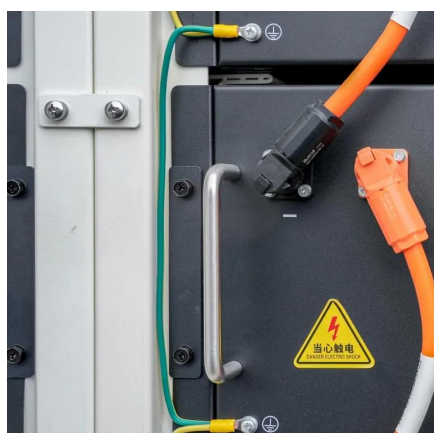
[Request Quote](#)



[How To Check Battery Amps Using A Multimeter?](#)

Checking battery amps with a multimeter involves setting the device to measure current, connecting the probes in series with the battery and load, and reading the ...

[Request Quote](#)



[HOW TO TEST THE INTERNAL CURRENT](#)



OF THE BATTERY CABINET

The core role is to accelerate the battery performance degradation process by simulating the charging and discharging cycle, high temperature/low temperature and other working ...

[Request Quote](#)



How To Test Battery Current Sensor With Multimeter? A Step-By ...

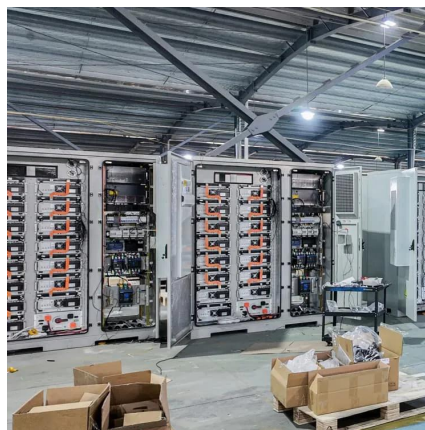
Testing a battery current sensor with a multimeter typically involves measuring the voltage output of the sensor under different current loads. The exact procedure varies slightly ...

[Request Quote](#)

How to Test the Health of Your LV Cabinet Batteries

The PROG 1 Pushbutton Delta V test is the best way to check your battery's health. This test momentarily places a 1 ohm short across the battery circuit. The change in battery voltage ...

[Request Quote](#)





Contact Us

For catalog requests, pricing, or partnerships, please visit:

<https://www.energyinnovationday.pl>

Phone: +48 22 335 1273

Email: info@energyinnovationday.pl

Scan the QR code to contact us via WhatsApp.

