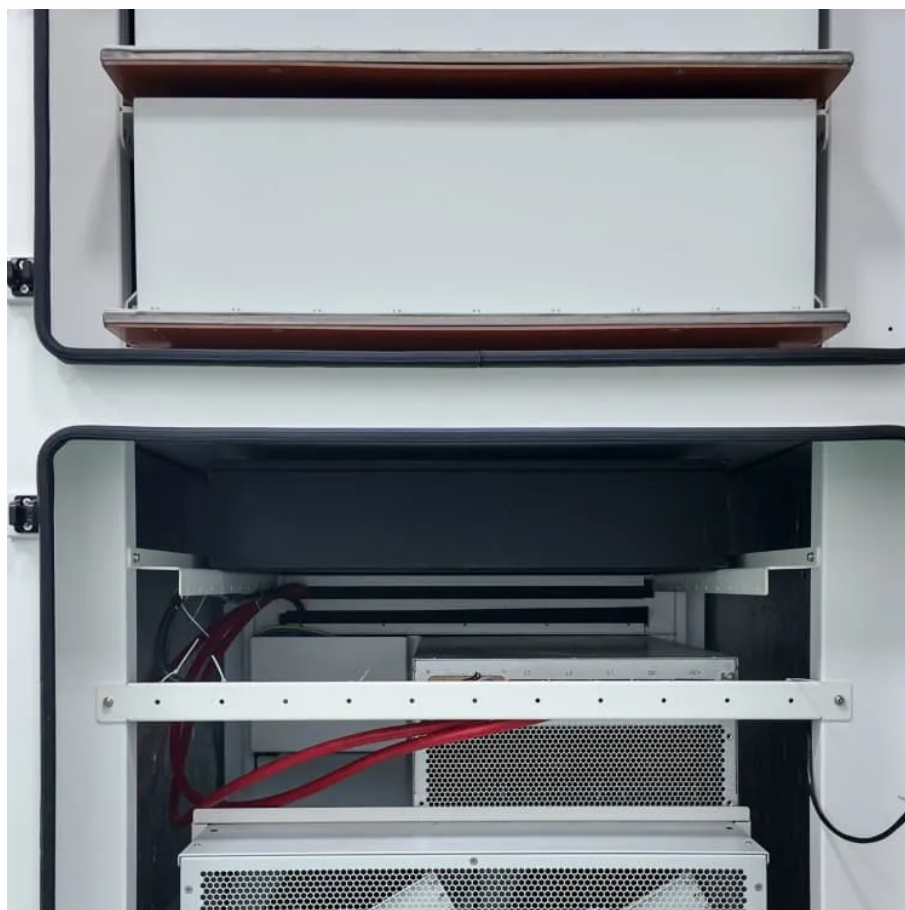




How to solve abnormal communication with base station





Overview

In the wireless communication system of large venues, the signal conflict of multiple base stations will seriously affect the communication quality, and the problem of signal conflict of multiple base stations can be solved from multiple dimensions, such as frequency planning, base.

In the wireless communication system of large venues, the signal conflict of multiple base stations will seriously affect the communication quality, and the problem of signal conflict of multiple base stations can be solved from multiple dimensions, such as frequency planning, base.

How to solve the problem of multiple base station signal conflict?

In the wireless communication system of large venues, the signal conflict of multiple base stations will seriously affect the communication quality, and the problem of signal conflict of multiple base stations can be solved from.

TETRA (Terrestrial Trunked Radio) base stations are critical components in mission - critical communication networks. As a TETRA base station supplier, I've encountered numerous troubleshooting scenarios over the years. In this blog, I'll share some comprehensive steps on how to troubleshoot a.

This section describes some possible station setup and static measurement issues, possible causes, and how to solve them. Use your field software to restart or configure base and rover receivers. The software sets up all radio and receiver operating parameters, and is the most likely route to a.

GNSS RTK (Real-Time Kinematic) technology enables high-precision positioning using GNSS receivers, making it indispensable in many fields such as agriculture, surveying, construction, and other areas where centimeter-level accuracy is crucial. However, sometimes during the RTK setup process, issues.

A fake base station exploits vulnerabilities in the broadcast message announcing a base station's presence, which is called SIB1 in 4G LTE and 5G NR, to get user equipment to connect to the fake base station. Once connected, the fake base station can deprive the user of connectivity and access to.



The key to any wireless system is the communication between the wireless transmitters and the base station. We use a bi-directional communication protocol; this means that if communications fail the system can alert users. The most common causes of communication failure are: Repeaters are turned.



How to solve abnormal communication with base station



Maximizing Signal Integrity in Telecommunication Base Station ...

This guide dives deep into PCB signal integrity, offering practical solutions for base station PCB design rules, high-speed signal routing, impedance control PCB techniques, and ...

[Request Quote](#)

[How to troubleshoot a TETRA Base Station?](#)

As a TETRA base station supplier, I've encountered numerous troubleshooting scenarios over the years. In this blog, I'll share some comprehensive steps on how to troubleshoot a TETRA base ...

[Request Quote](#)



[Fake Base Station Detection and Link Routing Defense](#)

We designed and built a defense scheme which detects and blacklists a fake base station and then, informed by the detection, avoids it through link routing for connectivity ...

[Request Quote](#)



CN116074876A

The present invention belongs to the field of abnormality detection of base station intelligent operation and maintenance, and in particular to a communication base station

[Request Quote](#)



[RTK Troubleshooting. A Step-by-Step Guide](#)

Make sure you are receiving incoming data from the base station and that the correction age is no more than 1 second. Data transmission delays also prevent receiving ...

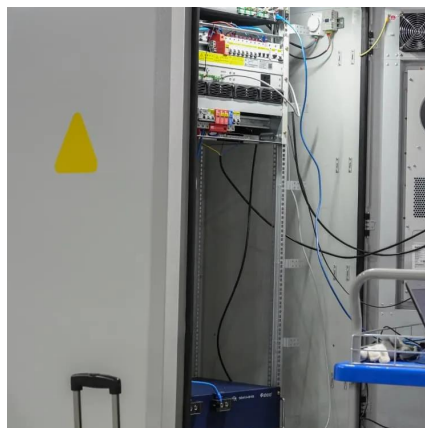
[Request Quote](#)



[How to Solve Multiple Base Station Signal Conflicts -Blog](#)

Learn how to resolve multiple base station signal conflicts with BelFone's expert tips. Improve radio network performance and ensure clear, reliable communication.

[Request Quote](#)



Communication Base Station Troubleshooting , Huijue Group E-Site

Recent breakthroughs in photonic error correction (PEC) algorithms now enable self-healing base stations to autonomously reroute signals around damaged components.

[Request Quote](#)



Fix Loss of Wireless Communications



Communication drops and breaks in the Signal Strength line show intermittent communication breaks are occurring. An additional repeater added to the system will assist in resolving these ...

[Request Quote](#)



Fix Loss of Wireless Communications

Communication drops and breaks in the Signal Strength line show intermittent communication breaks are occurring. An additional repeater ...

[Request Quote](#)



[Best Practices for Reliable Operator Station Communication](#)

Discover key strategies and technologies to ensure dependable operator station communication in environments prone to network disturbances.

[Request Quote](#)



Troubleshooting base station setup and static measurement ...

This section describes some possible station setup and static measurement issues, possible causes, and how to solve them. Use your field software to restart or configure base and rover ...

[Request Quote](#)



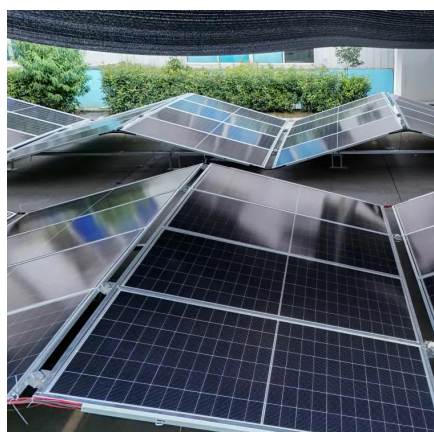
[Maximizing Signal Integrity in](#)



[Telecommunication ...](#)

This guide dives deep into PCB signal integrity, offering practical solutions for base station PCB design rules, high-speed signal ...

[Request Quote](#)



[How to troubleshoot a TETRA Base Station?](#)

As a TETRA base station supplier, I've encountered numerous troubleshooting scenarios over the years. In this blog, I'll share some ...

[Request Quote](#)



Contact Us

For catalog requests, pricing, or partnerships, please visit:

<https://www.energyinnovationday.pl>

Phone: +48 22 335 1273

Email: info@energyinnovationday.pl

Scan the QR code to contact us via WhatsApp.

