



How to open the new energy battery cabinet cover





Overview

There are two holes on the battery door cover, please open from the upper hole. Please pay attention to the direction of force, pull down, not pull out. Please pull the yellow button backwards and open the black back cover at the same time, then you can open it easily.

There are two holes on the battery door cover, please open from the upper hole. Please pay attention to the direction of force, pull down, not pull out. Please pull the yellow button backwards and open the black back cover at the same time, then you can open it easily.

There are three different battery case types. The way the battery is opened differs for each different battery case type: Situation 1: The battery case has screws that are visible on top of the battery. Situation 2: The battery case does not have screws that are visible on top of the battery and.

Scroll to the bottom of any page to find a sun or moon icon to turn dark mode on or off! How to open battery case?

Hi!Has anyone opened a battery case like this?

I'm just wondering if at some point I would have to replace the BMS unit, would it be a hard job?

Is the BMS unit mounted directly under.

With residential energy storage installations growing at 25% annually worldwide [2], understanding proper disassembly techniques becomes crucial. Whether you're upgrading components, recycling batteries, or troubleshooting system errors, safe disassembly is your gateway to maintaining these.

re of high battery current. Please ensure that the battery module breakers and/or on/off switches are in the “open” or “off” position before installin or working on the cabinet. Use a voltmeter to confirm there is no voltage pres he batteries are operating. Damage to system components or risk of.

WARNING: This indicates a fact or feature very important for the safety of the user



to prevent injury or death and/or which can cause serious hardware damage if not applied appropriately. **WARNING:** Do not attempt to self-install the NV14 Energy Storage System. A qualified solar installation.

The Vertiv™ EnergyCore Lithium 5 is a high power standby battery cabinet designed for use with uninterruptible power supply (UPS). See Technical Specification on page 65. **WARNING!** Failure to follow safety procedures during use of this product may result in death, serious injury or property damage.



How to open the new energy battery cabinet cover



How to Disassemble a Home Energy Storage System: A Step-by ...

Whether you're upgrading components, recycling batteries, or troubleshooting system errors, safe disassembly is your gateway to maintaining these \$15,000+ investments. ...

[Request Quote](#)

USER MANUAL BATTERY CABINET

Before installing batteries into the cabinet, carefully remove all items from inside the cabinet and lay it on its back, preferably on a clean surface or a furniture blanket.

[Request Quote](#)



The Ultimate Guide to Disassembly of Household Energy Storage ...

Ever wondered what makes your household energy storage system tick? As more families adopt solar-plus-storage solutions (over 1 million U.S. homes as of 2025!), a curious ...

[Request Quote](#)

SL-71251_EnergyCore Lithium 5_REVC_Web

Do not open any cover of the EnergyCore Lithium 5 enclosure other than the front door. The 15-digit part number is on the main label inside the door of EnergyCore Lithium 5. The part ...



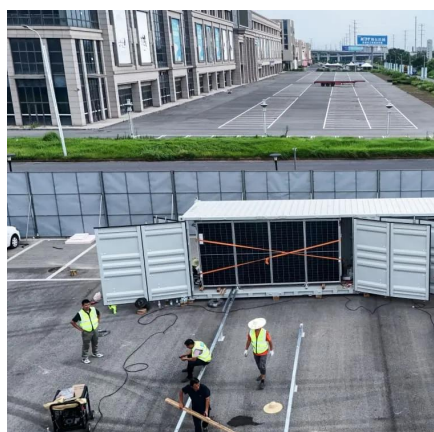
[Request Quote](#)



[NV14 Energy Storage System USER MANUAL](#)

The NV24 Optional Battery Cabinet can be installed indoors, such as a garage, or outdoors mounted using a concrete or pre-formed pad. The cabinet is a NEMA 3R rated cabinet ...

[Request Quote](#)



3. Opening the battery case

Situation 1: The battery case has screws that are visible on top of the battery. Situation 2: The battery case does not have screws that are visible on top of the battery and has ventilation slots.

[Request Quote](#)



How to open battery case?

Start with a narrow putty knife or scraper and hammer it into the seam, once it starts to go in lift handle and continue to hit it in as it goes down. Then hit the side of the putty ...

[Request Quote](#)



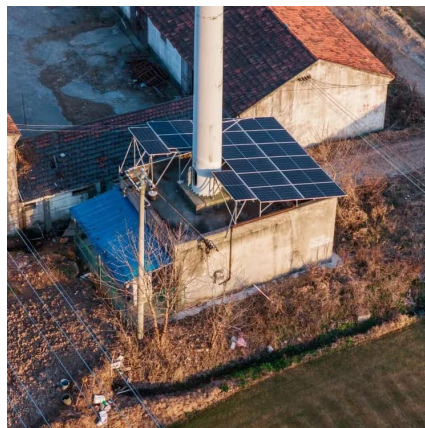
[How to replace batteries in new energy](#)



[battery cabinet](#)

We can help you get the right battery storage cabinet to match your new UPS. Whether leveraging an existing battery cabinet through a retrofit or opting for a new cabinet altogether, ...

[Request Quote](#)



Generac PWRcell Outdoor Rated Battery Cabinet APKE00028 Clean Energy

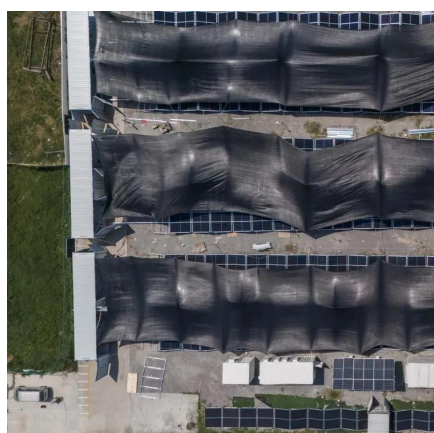
Explore the Generac PWRcell Outdoor Rated Battery Cabinet APKE00028 manual to learn about installation, operation, and maintenance of this energy storage solution. Read online, ...

[Request Quote](#)

How to open the battery cover

Please use your thumb or forefinger's nails to pull down the upper hole and you can easily take it off. Tips: There are two holes on the battery door cover, please open from the upper hole. ...

[Request Quote](#)



3. Opening the battery case

Situation 1: The battery case has screws that are visible on top of the battery. Situation 2: The battery case does not have screws that are visible on top ...

[Request Quote](#)



Contact Us

For catalog requests, pricing, or partnerships, please visit:

<https://www.energyinnovationday.pl>

Phone: +48 22 335 1273

Email: info@energyinnovationday.pl

Scan the QR code to contact us via WhatsApp.

