



How to open the ESS power base station in the computer room battery cabinet





Overview

This manual contains instructions for the installation and start up sequence of the Eguana Evolve™ ESS; including the PCS and master battery cabinets. This product is permanently wired to the home electrical service, and must be installed by a licensed electrician only.

This manual contains instructions for the installation and start up sequence of the Eguana Evolve™ ESS; including the PCS and master battery cabinets. This product is permanently wired to the home electrical service, and must be installed by a licensed electrician only.

This document is proprietary to Electronic Systems Support (ESS). This document cannot be copied or reproduced in whole or in part, nor can its contents be revealed in any manner or to any person except to meet the purpose for which it was delivered, without the express written permission of.

equipment and all safety precautions in the manual. In order to ensure better use of the product and ensure personal and property safety potential hazard and failure to avoid potential danger supplement to the content may also exist within the scope of equipment quality assurance. The installation.

This manual contains important instructions that you should follow during installation and maintenance of the UPS. Please read all instructions before operating the equipment and save this manual for future reference. Ce manuel comporte des instructions importantes que vous êtes invité à suivre.

This manual contains important instructions for the DURACELL POWER CENTER 5 kW, including the Power Control System (PCS) and base model battery cabinet installation and operation, herein defined as the ESS. The ESS is expandable with the addition of up to two more battery cabinets. Refer to this.

Page 4 1.2 ESS Battery Cabinet Model TRONIC ESS has different electricity products to meet user's needs, such as TR10250□TR20450□TR30750□TR40950. 1.3 Technical data. Page 5 1.4 System Schematic. Device Installation 2.1 Installation Requirements 2.1.1 Installation Environment 2.1.2 Installation.

This manual contains instructions for the installation and start up sequence of the



Eguana Evolve™ ESS; including the PCS and master battery cabinets. This product is permanently wired to the home electrical service, and must be installed by a licensed electrician only. The High Voltage All-In-One.



How to open the ESS power base station in the computer room battery



[TRONIC TR10250 QUICK MANUAL Pdf Download , ManualsLib](#)

Turn the isolation switch of ESS battery cabinet and inverter switch to "on" (refer to inverter manual for specific inverter operation). Press the start button.

[Request Quote](#)

[TRONIC TR10250 QUICK MANUAL Pdf Download ...](#)

Turn the isolation switch of ESS battery cabinet and inverter switch to "on" (refer to inverter manual for specific inverter operation). Press the start ...

[Request Quote](#)



[TechnologyCo.,LTD ESS-GRIDCabinetSeries UserManual](#)

During the installation, operation and maintenance, it is necessary to clean up the water, snow and ice or other sundries on the top of the cabinet first, and then open the cabinet door to ...

[Request Quote](#)

[93005Rev01 Duracell Power Center Install and Startup Manual](#)

This manual contains important instructions for the DURACELL POWER CENTER 5 kW, including the Power Control System (PCS) and base model battery cabinet installation and ...



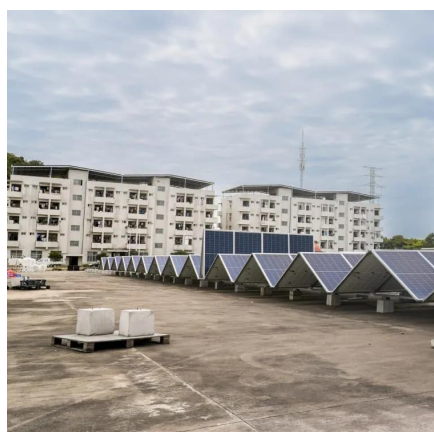
[Request Quote](#)



[Eaton 9395XC UPS and Samsung Gen 3 Battery Cabinet ...](#)

The installation manuals of the UPS and battery cabinet describe how to install and operate the Power Expert UPS and battery cabinets. Read and understand the procedures described in ...

[Request Quote](#)



Evolve ESS Installation Manual

This manual contains important instructions for the Eguana Evolve™ ESS - including the Power Control System (PCS) and base model battery cabinet installation and operation.

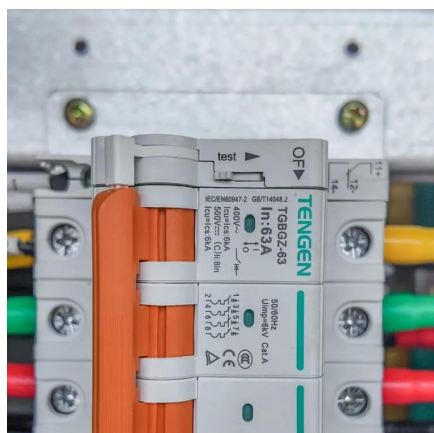
[Request Quote](#)



Battery cabinet installation and connection to ESS power ...

Installing an ESS lithium-ion battery system requires careful planning, proper tools, and adherence to safety protocols. By following this guide, you can ensure a successful

[Request Quote](#)



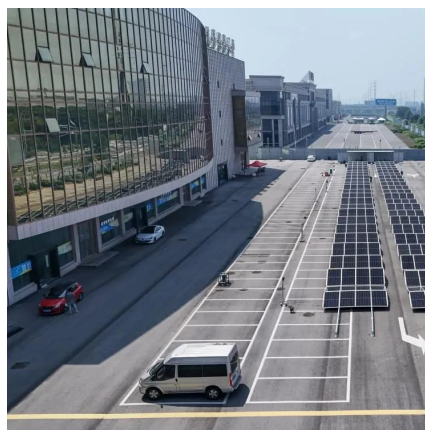
[Duracell DUR-D-14KWH-LFP-EXP : Install](#)



[Manual](#)

IMPORTANT SAFETY INSTRUCTIONS SAVE THESE INSTRUCTIONS This manual contains important instructions for the DURACELL POWER CENTER 5 kW, including the Power ...

[Request Quote](#)



[Voltage battery cabinet installation ESS power base station](#)

This manual contains instructions for the installation and start up sequence of the Eguana Evolve™ ESS; including the PCS and master battery cabinets. This product is permanently ...

[Request Quote](#)

Microsoft Word

The battery cabinet is equipped with narrow pallet jack or forklift access openings in the front and rear of the cabinet. Move the equipment into the desired location and set in place.

[Request Quote](#)





Contact Us

For catalog requests, pricing, or partnerships, please visit:

<https://www.energyinnovationday.pl>

Phone: +48 22 335 1273

Email: info@energyinnovationday.pl

Scan the QR code to contact us via WhatsApp.

