



How to ground an outdoor base station





Overview

How can I set up proper grounding for a base station?

Placing an 8' ground rod into the ground directly below the antenna is recommended for a base station. Then, run a #8 solid copper ground wire from the U-Clamp, attaching the antenna to the mast.

How can I set up proper grounding for a base station?

Placing an 8' ground rod into the ground directly below the antenna is recommended for a base station. Then, run a #8 solid copper ground wire from the U-Clamp, attaching the antenna to the mast.

After antennas, station grounding is probably the most discussed subject in amateur radio and it is also the one replete with the most misconceptions. The first thing to know is that there are three functions served by grounding in ham shacks: 1. Electrical Safety 2. Stray RF Suppression (or simply,

Base station antennas are fixed installations for receiving radio signals, and are usually on tall structures placed at a great height over the ground. This makes them easy targets for lightning strikes, as they're usually high structures made of a conductor. Grounding your base station antenna.

Every ham or GMRS station needs proper grounding — not just for performance, but for safety \sphericalangle . In this guide, James (N0WRL) walks you step by step through installing a dedicated 8-foot ground rod for your permanent antenna system. Here is a link to the full guide with the materials list:

In setting up a base station, placing an 8' ground rod into the ground directly below the antenna is recommended. Run a #8 solid copper ground wire from the U-Clamp, attaching the antenna to the mast. Add a second 1/4-20 nut to the clamp. The ground rod and ground wire are available at hardware or.

CB antenna grounding is one of the most important — and most overlooked — steps in getting the best range, clarity, and safety from your CB radio. Whether you're installing a mobile CB in your vehicle or setting up a base station, proper grounding and RF bonding can mean the difference between.



picture grounding demonstration. I've decided to try and fill that void by creating just that, a some-what complete, portable grounding visual aid, with the NEC (National Electric Code). You can ground your mast by connecting a heavy (6 AWG minimum) ground wire between your mast and your ground rod, using a clamp. How do I design a grounding system for a high-powered station?

When designing a grounding system for a high-powered station, there are several technical factors to consider: Grounding Resistance: The resistance between your grounding system and the earth should be as low as possible, typically under 10 ohms, but ideally below 5 ohms for optimal safety.

What is a high-powered radio station grounding system?

A typical high-powered amateur radio station grounding system includes the following components: Grounding Rods: These are typically made of copper or copper-clad steel and are driven into the ground to provide a low-resistance path to earth. A common practice is to use multiple ground rods placed several feet apart.

Why is grounding important for high-powered stations?

1. Why Grounding Is Crucial for High-Powered Stations Grounding serves several essential purposes: Lightning Protection: High-power transmissions can attract lightning, and a good grounding system will safely redirect this electrical energy into the earth, reducing the risk of damage to your station and property.

Why do radio stations need to be grounded?

A properly grounded system minimizes this interference, ensuring cleaner transmission and reception. Safety from Electrocution: Grounding ensures that if any part of your radio station's equipment becomes electrically charged, the energy will flow into the ground, minimizing the risk of electric shock.



How to ground an outdoor base station



Grounding a base station antenna

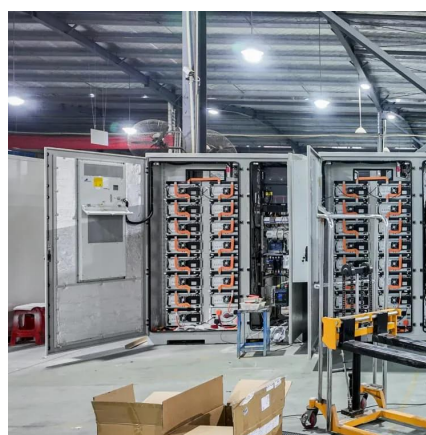
Lightning travels miles through the air to get to ground and your antenna and tower are just a convenient path for it. Current will ...

[Request Quote](#)

[Proper Base Station & Mobile Grounding](#)

Ensure optimal performance and safety of your base station with proper grounding techniques. Learn how to prevent shocks and RFI problems.

[Request Quote](#)



Proper CB Antenna Grounding Practices: RF Bonding, Materials, ...

Whether you're installing a mobile CB in your vehicle or setting up a base station, proper grounding and RF bonding can mean the difference between crystal-clear ...

[Request Quote](#)

Grounding a base station antenna

Lightning travels miles through the air to get to ground and your antenna and tower are just a convenient path for it. Current will follow your coax (either the shield or the ...

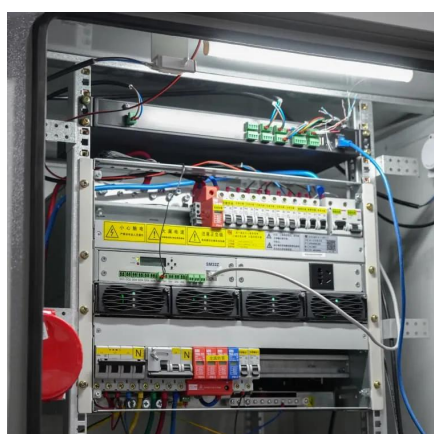
[Request Quote](#)



Grounding

Article shows how to develop a good external ground system to complete your station's protection. Perfect ground vs poor ground What is the difference How does the ...

[Request Quote](#)



[Proper Antenna Grounding Made Easy ? , How ...](#)

In this guide, James (NOWRL) walks you step by step through installing a dedicated 8-foot ground rod for your permanent antenna system.

[Request Quote](#)



[CBWI August 1996 Proper Base Station & Mobile Grounding](#)

Proper grounding will correct this problem. In setting up a base station it's recommended that you place a 8' ground rod into the ground directly below the antenna. Run a #8 solid copper ...

[Request Quote](#)



[How to Ground a CB Base Station](#)



[Antenna](#)

Grounding your base station antenna requires some reading on both relevant regulations and some of the underlying physics. These principles apply to both Citizens Band (CB) and High ...

[Request Quote](#)



[Proper CB Antenna Grounding Practices: RF...](#)

Whether you're installing a mobile CB in your vehicle or setting up a base station, proper grounding and RF bonding can mean ...

[Request Quote](#)

Tech corner Your station ground

In your shack your coax and ground can enter. You should get hold of a thick sheet of steel or copper and moun it on your shack wall or desk. This is known as yo r ground panel or ground ...

[Request Quote](#)



Grounding

One wire of the feedline connects to the base of the antenna, and the other connects to ground. The connection to ground has to have a low RF resistance, or you'll expend too much of your ...

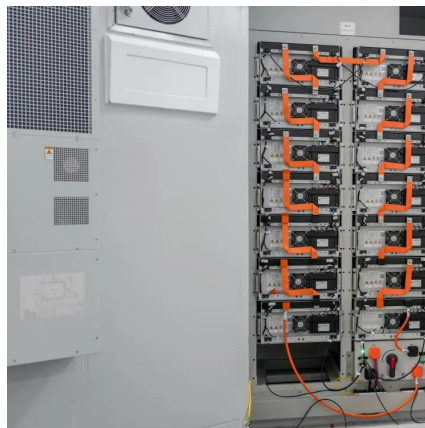
[Request Quote](#)

[Proper Base Station & Mobile Grounding](#)



Ensure optimal performance and safety of your base station with proper grounding techniques. Learn how to prevent shocks and RFI problems.

[Request Quote](#)



[Proper Antenna Grounding Made Easy ? , How to Install a](#)

In this guide, James (NOWRL) walks you step by step through installing a dedicated 8-foot ground rod for your permanent antenna system.

[Request Quote](#)



[The Essential Guide to Grounding Systems for ...](#)

A proper grounding system is one of the most critical aspects of setting up a high-powered amateur radio station. It not only ensures ...

[Request Quote](#)



The Essential Guide to Grounding Systems for High-Powered ...

A proper grounding system is one of the most critical aspects of setting up a high-powered amateur radio station. It not only ensures safety but also helps in achieving optimal ...

[Request Quote](#)





Contact Us

For catalog requests, pricing, or partnerships, please visit:

<https://www.energyinnovationday.pl>

Phone: +48 22 335 1273

Email: info@energyinnovationday.pl

Scan the QR code to contact us via WhatsApp.

