



How to disable the battery cabinet protection system





Overview

Manually set the battery breaker of each individual battery cabinet to the OFF (open) position to disconnect the battery power from the UPS. NOTE: The system BMS and rack BMS will still be operating. Battery cabinet EPO cables should be connected to the system EPO.

Manually set the battery breaker of each individual battery cabinet to the OFF (open) position to disconnect the battery power from the UPS. NOTE: The system BMS and rack BMS will still be operating. Battery cabinet EPO cables should be connected to the system EPO.

Contact site operator for assistance in accordance with the Emergency Response Plan (ERP). Confirm power isolation and shut-of.

NOTE: This procedure is only for a short temporary shutdown of the battery solution. If the battery solution should remain shut down for a longer period, please contact Schneider Electric. The battery cabinet contains an internal energy source. Hazardous voltage is still present after the battery.

This manual contains proprietary and confidential information of C&C Power, Inc., and has been prepared for the use of Mitsubishi Electric Power Products, Inc., for use in conjunction with equipment provided by C&C Power, Inc. unauthorized reproduction, in whole or in part, without written.

Is there a way to permanently disable the system?

Here are some pics of the panels and what I believe is the control panel. Thanks in advance. Find the incoming AC power feed. Disconnect and cap off. Remove the battery connections (the black thing in the lower left of the panel. No more power to.

This manual contains important instructions that you should follow during installation and maintenance of the UPS. Please read all instructions before operating the equipment and save this manual for future reference. Ce manuel comporte des instructions importantes que vous êtes invité à suivre.

SurgeX offers the most reliable protection from the harmful effects of electrical line



disturbances for your computing and communications equipment. SurgeX's ISO 9001 certification represents our commitment to building world-class products. We take pride in every unit that leaves our facility.



How to disable the battery cabinet protection system



Battery Energy Storage System (BESS)

Contact site operator for assistance in accordance with the Emergency Response Plan (ERP). Confirm power isolation and shut-of.

[Request Quote](#)

Online Battery Backup

Before connecting a battery cabinet to the UPS, the circuit breaker of the battery pack must be switched to "OFF". After electrical connection with the UPS is established, the breaker must be ...

[Request Quote](#)



[Eaton 93PM Gen 2 UPS and Samsung Gen 3 Battery ...](#)

This manual contains important instructions that you should follow during installation and maintenance of the UPS. Please read all instructions before operating the equipment and save ...

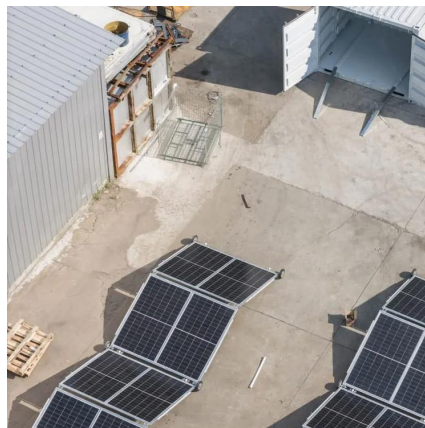
[Request Quote](#)



Permanently disable security system

We moved house about a year ago. The previous owner had an alarm system, which we assumed was inactive, but whenever we ...

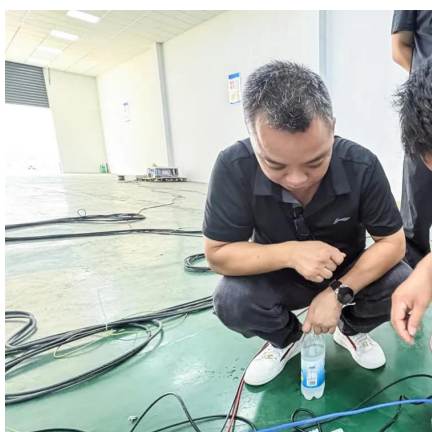
[Request Quote](#)



LITHIUM-ION SAFETY

Consider using an approved cabinet or rack to reduce these separation distances. Close the door. Leave the building immediately. Call 911/the Fire Department from an outdoor location. Do not ...

[Request Quote](#)



Permanently disable security system

We moved house about a year ago. The previous owner had an alarm system, which we assumed was inactive, but whenever we lose/regain power, the panels beep ...

[Request Quote](#)



[755-00086 R02 BC16 MITSUBISHI MANUAL](#)

The BC16 battery cabinet is equipped with four casters, two swivel types in front and two rigid types in the back. Move the cabinet into the desired location and lock the front casters.

[Request Quote](#)



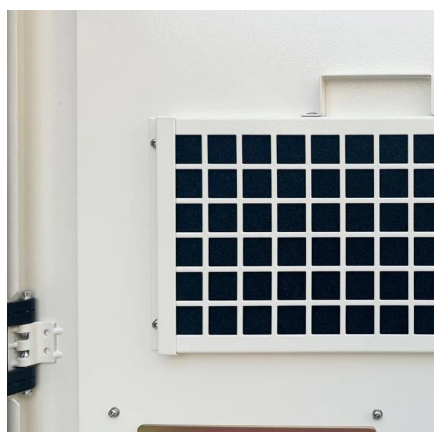
Battery Safety , Division of Homeland



Security and Emergency ...

For emergencies involving lithium-ion batteries in large scale energy storage outdoor (non-occupiable) cabinets. The course gives the students information on the dangers associated ...

[Request Quote](#)



Switching & Protection solutions for Battery Racks in Battery ...

Every battery rack requires adequate galvanically switching and protection against overcurrents caused by battery modules. Unlike in PV strings, the overcurrents caused by batteries can be ...

[Request Quote](#)

[Polarium® Anti Theft Next Generation Theft Protection](#)

Polarium's Battery Management System (BMS) uses an internal accelerometer that detects when a battery is tilted or subjected to force - and automatically disables the BMS.

[Request Quote](#)



Shut Down the Battery Solution

Manually set the battery breaker of each individual battery cabinet to the OFF (open) position to disconnect the battery power from the UPS. NOTE: The system BMS and rack BMS will still ...

[Request Quote](#)



Contact Us

For catalog requests, pricing, or partnerships, please visit:

<https://www.energyinnovationday.pl>

Phone: +48 22 335 1273

Email: info@energyinnovationday.pl

Scan the QR code to contact us via WhatsApp.

