



How to connect the ground wire of the DC battery cabinet





Overview

At the DC Power Cabinet, connect a 10 AWG (#25) (6 mm²) ground wire to the Ground Discharge Bar. See Figure 1-7. 2. Route the 10 AWG (#25) (6 mm²) ground wire to the CBC ground terminal bar at the MDF.

At the DC Power Cabinet, connect a 10 AWG (#25) (6 mm²) ground wire to the Ground Discharge Bar. See Figure 1-7. 2. Route the 10 AWG (#25) (6 mm²) ground wire to the CBC ground terminal bar at the MDF.

This is a conductor that connects to the single-point ground block and run adjacent to pairs in an associated cable. The mutual coupling between the CBC and the pairs reduces potential differences in terminating equipment. The conductor consists of a 10 AWG (#25) (6 mm²) wire terminated at the CBC.

Note: A Note symbol shows the information the user or the service personnel should observe while operating the battery cabinet or conducting service work. Prohibit: A prohibit symbol shows the acts the user or service personnel should NEVER perform during the battery cabinet installation, operation.

Welcome to the Principle Cabinet Design training module for the DCS800, ABB DC Drives. If you need help navigating this module, please click the Help button in the top right-hand corner. To view the presenter notes as text, please click the Notes button in the bottom right corner. the correct wire.

Learn whether or not you should connect a direct current power supply to the ground. Part VIII of Article 250 deals with grounding and bonding direct-current (DC) systems supplying power to premises. Some of these rules differ from those intended explicitly for alternating-current (AC) systems.

For a standard substation DC battery rack, I am having trouble determining whether a ground is required to be installed along with the wires between the battery disconnect switch and the battery rack. It's 125VDC. My usual approach is to include a ground until I can prove that a ground is not.

Grounding - Ensure that all batteries are installed in the EG4 battery rack using the mounting hardware provided. Connect a grounding conductor to the grounding lug (or screw) on the rack (or cabinet), then connect the grounding conductor to a



grounding rod. (Warning - DO NOT ground rack/cabinet.



How to connect the ground wire of the DC battery cabinet



DC Battery Rack Grounding

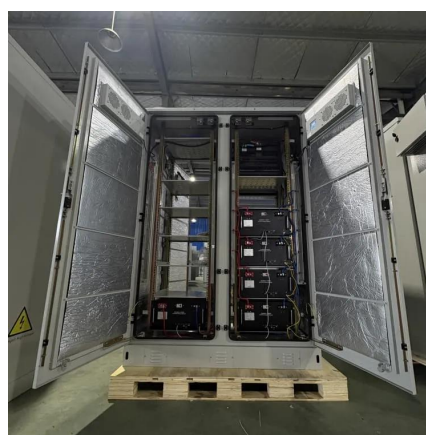
For a standard substation DC battery rack, I am having trouble determining whether a ground is required to be installed along with the wires between the battery disconnect switch ...

[Request Quote](#)

Grounding Negative System

That ground has to be a very solid low resistance connection. It is a direct connection to the battery with batteries near the engine, and often via the chassis with remote batteries. A ...

[Request Quote](#)



Grounding Negative System

That ground has to be a very solid low resistance connection. It is a direct connection to the battery with batteries near the engine, and often via the ...

[Request Quote](#)

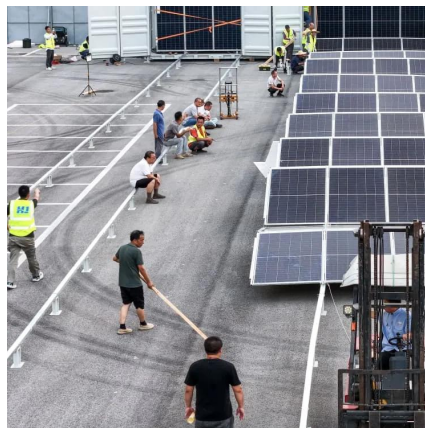


Why can't the battery cabinet be grounded

Connect a grounding conductor to the grounding lug (or screw) on the rack (or cabinet), then connect the grounding conductor to a grounding rod. (Warning - DO NOT ground rack/cabinet ...



[Request Quote](#)



[NEC Basics: Grounding and Bonding DC Systems Supplying ...](#)

Learn whether or not you should connect a direct current power supply to the ground. Part VIII of Article 250 deals with grounding and bonding direct-current (DC) systems ...

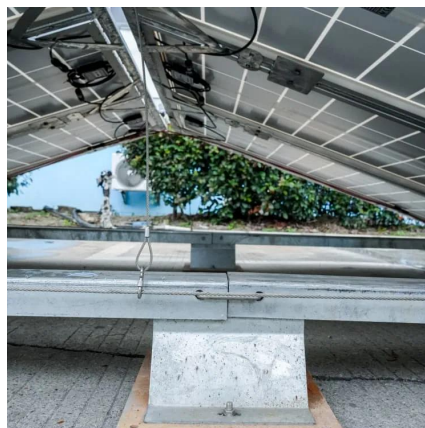
[Request Quote](#)



[-48 VDC Battery Cabinet Installation and User Manual ...](#)

Connect the power system's battery cable terminated in an Anderson connector to the first battery cabinet's battery cable terminated in a mating Anderson connector.

[Request Quote](#)



U-ENM00044

Connect the ground wire from the UPS to the supplied cabinet ground located on the circuit breaker mounting bracket. See section 4.2 for ground wire sizing recommendations.

[Request Quote](#)



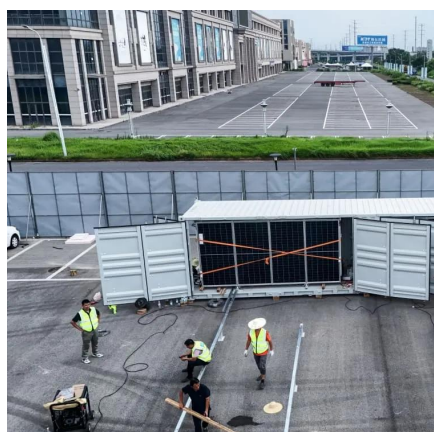
[Grounding 6 EG4 LL V2 server rack](#)



[batteries](#)

To do this, you attach a screw to the case of the battery (not the + or - terminals), attach a wire to the screw, then connect that wire to the server rack. Then attach another wire ...

[Request Quote](#)



[NEC Basics: Grounding and Bonding DC Systems Supplying ...](#)

For a standard substation DC battery rack, I am having trouble determining whether a ground is required to be installed along with the wires between the battery disconnect switch ...

[Request Quote](#)

[Grounding DC Power Supplies: What You Need to Know](#)

Should you connect a DC power supply to ground or not? The answer is not a straightforward yes or no. This article explores the benefits and drawbacks of grounding DC ...

[Request Quote](#)



[Grounding DC Power Supplies: What You Need to ...](#)

Should you connect a DC power supply to ground or not? The answer is not a straightforward yes or no. This article explores the ...

[Request Quote](#)

Connect DC Power and Ground ,



Lucent Technologies Release 6 ...

Route the 10 AWG (#25) (6 mm²) ground wire to the CBC ground terminal bar at the MDF. Be sure a minimum of 12 inches (30.5 cm) spacing is maintained between the CBC and other ...

[Request Quote](#)



[Principle Cabinet Design EMC and grounding G574e Part 3](#)

In the following slides, the symbols will be used to differentiate between protective earth connections and ground connections!

[Request Quote](#)



Contact Us

For catalog requests, pricing, or partnerships, please visit:

<https://www.energyinnovationday.pl>

Phone: +48 22 335 1273

Email: info@energyinnovationday.pl

Scan the QR code to contact us via WhatsApp.

