



# How to choose the right protocol for a 15kW folding container





## Overview

---

Learn how to choose the right solar containerized energy unit based on your energy needs, battery size, certifications, and deployment conditions. A practical guide with real examples and key questions to ask.

Learn how to choose the right solar containerized energy unit based on your energy needs, battery size, certifications, and deployment conditions. A practical guide with real examples and key questions to ask.

Especially when customizing a 15KW off-grid solar system, the selection of the inverter, charge controller, battery, solar panels, and mounting racks all need to be carefully matched. Here is a detailed interpretation of how to customize the configuration of a 15KW off-grid solar system. 15KW.

But one of the most important factors in choosing the right solution is understanding BESS container size — and how it impacts performance, cost, and scalability. From small 20ft units powering factories and EV charging stations, to large 40ft containers stabilizing microgrids or utility loads, the.

Battery Energy Storage System (BESS) is a containerized solution that is designed to store and manage energy generated from renewable sources such as solar and wind power. BESS containers are a cost-effective and modular way to store energy, and can be easily transported and deployed in various.

Ever wondered how to set up a 15kW on-grid solar power system?

This comprehensive guide breaks down every step, from choosing the right components like 585W solar panels and high-efficiency inverters, to detailed explanations of PV string sizing, ACDB and DCDB components, and crucial wiring.

When selecting the best energy storage container for your solar or backup power system, prioritize battery chemistry, usable capacity, round-trip efficiency, and thermal management. For most off-grid or commercial applications, lithium-ion-based containers with integrated inverters and UL.

Choosing a suitable solar containerized energy unit can be overwhelming—especially when you're weighing budget, location, load demands,



and long-term reliability. Whether you're powering a remote building, serving as a grid backup, or preparing for going off-grid, the containerized solar setup you. How do I choose the right Bess container size?

Regardless of format, each containerized energy storage system includes key components such as battery racks, BMS, EMS, cooling, and fire protection. When selecting the right BESS container size, it's important to go beyond just how much energy you want to store. Consider these practical factors:.

What factors should you consider when choosing a 40ft container?

Consider these practical factors: Site footprint and installation space: A 40ft container may offer more capacity, but only if the site can accommodate it. Power and energy requirements: Some applications need high discharge power (kW), while others prioritize total energy (kWh).

How do I select a container?

Container selection and structural modifications: - Select an appropriate container size (e.g., 20-foot or 40-foot) based on the system layout and required capacity. - Make necessary structural modifications to the container, such as ventilation openings, cable entry points, and door reinforcements.

What size battery energy storage container do I Need?

From small 20ft units powering factories and EV charging stations, to large 40ft containers stabilizing microgrids or utility loads, the right battery energy storage container size can make a big difference.



## How to choose the right protocol for a 15kW folding container



### How to Choose the Best Solar System 15kW for Your Home or ...

Discover what to look for in a 15kW solar system, from panel efficiency to inverter types and cost considerations. Make an informed decision today.

[Request Quote](#)

### [BESS Container Sizes: How to Choose the Right ...](#)

Not sure which BESS container size fits your project? Discover the differences between 20ft, 40ft, and modular systems--plus expert tips ...

[Request Quote](#)



### [How to Customize a 15KW Off-Grid Solar System ...](#)

Choosing the right solar system configuration is crucial for the system's performance. Especially when customizing a 15KW off-grid solar ...

[Request Quote](#)



### [BESS Container Sizes: How to Choose the Right Capacity](#)

Not sure which BESS container size fits your project? Discover the differences between 20ft, 40ft, and modular systems--plus expert tips to help you choose the right solution.



[Request Quote](#)



### [How to Choose the Right Solar Containerized ...](#)

Learn how to choose the right solar containerized energy unit based on your energy needs, battery size, certifications, and deployment ...

[Request Quote](#)



### [How to Set Up a Mobile Solar Container Effectively](#)

Learn how to set up a mobile solar container efficiently--from site selection and panel alignment to battery checks and EMS ...

[Request Quote](#)



### [How to Set Up a Mobile Solar Container Effectively](#)

Learn how to set up a mobile solar container efficiently--from site selection and panel alignment to battery checks and EMS configuration. Avoid common mistakes and get ...

[Request Quote](#)



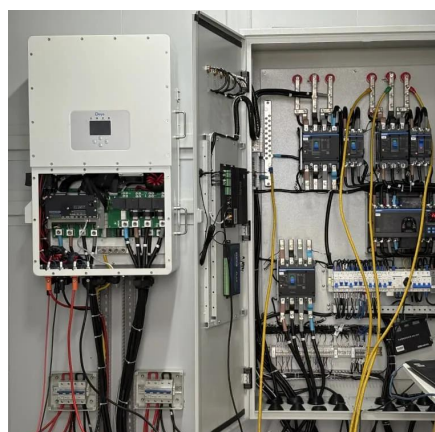
## **How to Choose the Best Energy**



## Storage Container: A Complete ...

Choosing the right energy storage container requires balancing technical performance, safety, cost, and long-term support. For most users, a UL-certified, LFP-based, ...

[Request Quote](#)



## [15kW On-Grid Solar System: The ULTIMATE DIY Setup Guide](#)

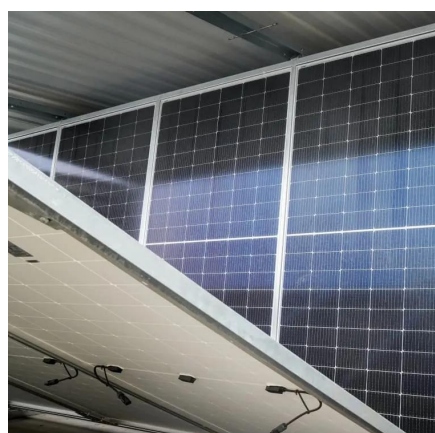
In this comprehensive video, we're showing you exactly how to install a powerful 15kW on-grid solar power system, step-by-step!

[Request Quote](#)

## Designing a BESS Container: A Comprehensive Guide to Battery ...

Discover the essential steps in designing a containerized Battery Energy Storage System (BESS), from selecting the right battery technology and system architecture to ...

[Request Quote](#)



## How to Customize a 15KW Off-Grid Solar System Configuration?

Choosing the right solar system configuration is crucial for the system's performance. Especially when customizing a 15KW off-grid solar system, the selection of the ...

[Request Quote](#)

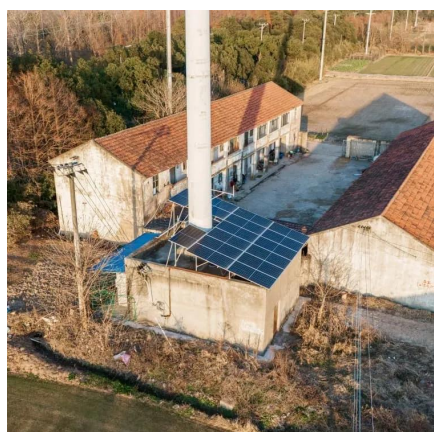
## [How to Choose the Right Solar](#)



## [Containerized Energy Unit](#)

Learn how to choose the right solar containerized energy unit based on your energy needs, battery size, certifications, and deployment conditions. A practical guide with ...

[Request Quote](#)



## [How to Choose the Right Mobile Solar Container for You](#)

In these first 100 words, we outline the fundamentals of mobile solar containers and take you through the process of determining whether a solar shipping container or a fully ...

[Request Quote](#)

## [BATTERY ENERGY STORAGE SYSTEM CONTAINER, ...](#)

It consists of a fundamental container enclosure body, pre-equipped with a battery rack. This foundational setup gives our clients the freedom to integrate additional components as they ...

[Request Quote](#)





## Contact Us

---

For catalog requests, pricing, or partnerships, please visit:

<https://www.energyinnovationday.pl>

Phone: +48 22 335 1273

Email: [info@energyinnovationday.pl](mailto:info@energyinnovationday.pl)

Scan the QR code to contact us via WhatsApp.

