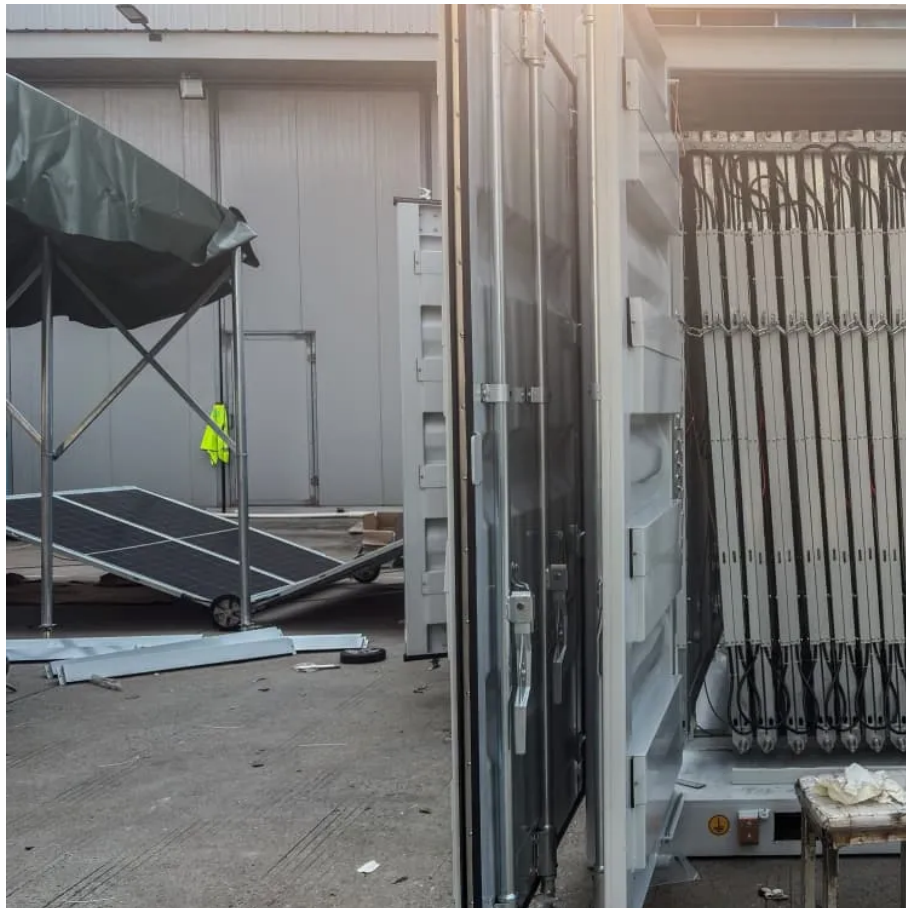




How to charge the solar container lithium battery of Huawei base station power supply





Overview

Lithium batteries can be activated through power cables. Do not perform operations with power on when connecting cables for recharge. The customer purchases or arranges a DC regulated power supply to recharge lithium batteries by performing the following.

Lithium batteries can be activated through power cables. Do not perform operations with power on when connecting cables for recharge. The customer purchases or arranges a DC regulated power supply to recharge lithium batteries by performing the following.

How to charge lithium ion battery?

These are questions that many people are confused about, and the following lithium-ion battery charging guide will answer these questions one by one. What Are Lithium-Ion Batteries and How Do They Work?

Lithium-ion batteries are rechargeable energy storage devices.

Welcome to Photovoltaic Warehouse, your ultimate guide to diving into the wonderful world of solar energy! Our channel specializes in solar panels, batteries, and solar inverters, providing comprehensive education on installation, maintenance, and optimization of solar systems. At Photovoltaic.

To charge a portable power station, you can mainly use four types of outlets - home outlets, car outlets, solar panels and a generator. Let's take a look at each one in turn. The easiest and most common way to charge your portable power station is with a wall outlet. This method is ideal for.

This comprehensive guide explains how to charge lithium battery correctly, covering key topics like battery chemistries, charging stages, safety protocols, compatible chargers, and troubleshooting. 1. Introduction: Why Proper Lithium Battery Charging Matters Lithium batteries have revolutionized.

Step-by-Step Charging Process: Ensure proper battery condition, select the right charger, and make secure connections to achieve safe and effective charging. Troubleshooting Charging Issues: Regularly inspect connections, monitor voltage,



and reposition solar panels to address common problems and.

But with various charging methods available—from wall outlets and car chargers to solar panels—understanding the most efficient way to recharge your station is key to getting the best performance and longevity. In this guide, we'll explore different charging options, average charging times, common.



How to charge the solar container lithium battery of Huawei base sta



How to Charge Solar Battery: Step-by-Step Guide for Efficient ...

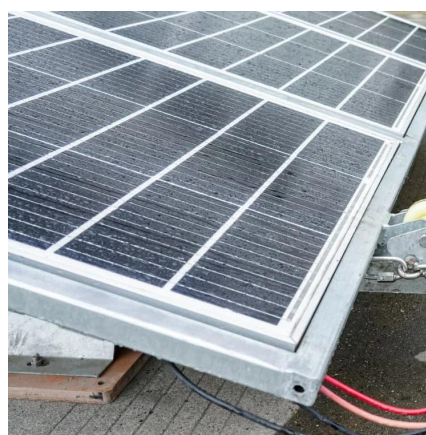
Discover how to effectively charge your solar battery with our comprehensive guide. We break down the types of solar batteries, optimal charging methods, and the essential steps ...

[Request Quote](#)

[How to charge lithium-ion battery? Charging guide](#)

Learn how to charge a smart lithium ion battery pack and regular Li-ion batteries safely. Get tips on USB/solar charging, overcharging prevention & extending battery lifespan.

[Request Quote](#)



[Huawei LUNA2000 Lithium Battery and BACKUP BOX Tutorial](#)

In today's tutorial, we'll be diving deep into the Huawei LUNA2000 Lithium Battery and the BACKUP BOX. From unboxing to the final setup, we've got you covered. Whether you're a ...

[Request Quote](#)

How to Charge Lithium Battery

Learn how to charge lithium battery safely and effectively with expert tips for Li-ion, LiFePO4, and lithium polymer batteries. Discover charging stages, compatible chargers, and ...

[Request Quote](#)



How to Charge a Battery with Solar Power: A Complete Guide to

Discover how to harness solar power to charge your batteries and keep your devices operational, even without traditional outlets. This comprehensive guide explores the ...

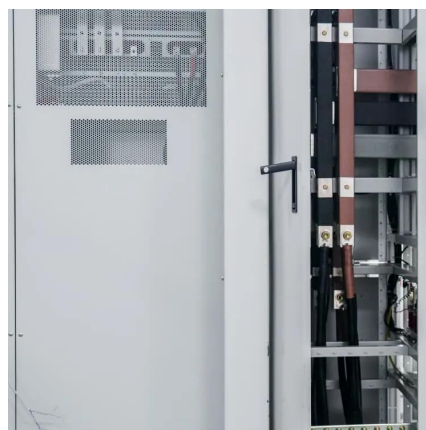
[Request Quote](#)



Charging a Lithium Battery

Set charge parameters for the DC power supply. Use the default charge current limit (0.2C). The charge duration is greater than 10 minutes and the charge current is less than 0.02C, or the ...

[Request Quote](#)



[Huawei LUNA2000 Lithium Battery and BACKUP ...](#)

In today's tutorial, we'll be diving deep into the Huawei LUNA2000 Lithium Battery and the BACKUP BOX. From unboxing to the ...

[Request Quote](#)

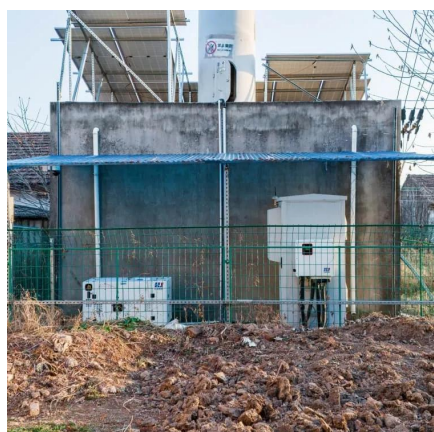
[HOW TO CHARGE AND USE BASE STATION](#)



LITHIUM ...

Technological advancements are dramatically improving solar storage container performance while reducing costs. Next-generation thermal management systems maintain optimal ...

[Request Quote](#)



4 Best Ways on How to Charge/Recharge a Portable Power Station

This guide has explored four effective ways to ensure your device remains powered: using home outlets for quick and convenient charging, utilizing your car's battery for ...

[Request Quote](#)

Battery Storage and Recharge

Choose Maintenance > Battery maintenance > Forced charge/discharge, set Working Mode to Maintenance charge, and enable Maintenance charge. Check that the circular SOC indicator ...

[Request Quote](#)



[4 Best Ways on How to Charge/Recharge a ...](#)

This guide has explored four effective ways to ensure your device remains powered: using home outlets for quick and convenient ...

[Request Quote](#)

[How to Charge a Portable Power Station?](#)



In this comprehensive guide, we will walk you through all you need to know about how to charge a portable power station.

[Request Quote](#)



[How to Charge a Portable Power Station?](#)

In this comprehensive guide, we will walk you through all you need to know about how to charge a portable ...

[Request Quote](#)



Contact Us

For catalog requests, pricing, or partnerships, please visit:

<https://www.energyinnovationday.pl>

Phone: +48 22 335 1273

Email: info@energyinnovationday.pl

Scan the QR code to contact us via WhatsApp.

