



How to calculate the power consumption of Sudan 5G base station





Overview

How much energy does a 5G base station consume?

Because it is estimated that in 5G, the base station's density is expected to exceed 40–50 BSs/ Km² . The energy consumption of the 5G network is driving attention and many world-leading network operators have launched alerts about the increased power consumption of the 5G mobile infrastructure .

Should power consumption models be used in 5G networks?

This restricts the potential use of the power models, as their validity and accuracy remain unclear. Future work includes the further development of the power consumption models to form a unified evaluation framework that enables the quantification and optimization of energy consumption and energy efficiency of 5G networks.

Can machine learning predict energy consumption for 5g/4g radio base stations?

To further develop energy modelling methodology and attempt to answer the questions presented in the previous section, different machine learning algorithm's ability to predict energy consumption is investigated for 5G/4G radio base stations.

Is energy self-sufficiency of 5G mobile networks possible?

The energy self-sufficiency of 5G mobile networks is a promising area of research. Renewable energy is the best choice to power small cell networks in 5G infrastructure to minimize the on-grid power and effects on the environment.



How to calculate the power consumption of Sudan 5G base station



[Comparison of Power Consumption Models for 5G Cellular ...](#)

The first step when modeling the energy consumption of wireless communication systems is to derive models of the power consumption for the main system components, which ...

[Request Quote](#)

[Modelling the 5G Energy Consumption using Real-world ...](#)

To address this, we propose a novel deep learning model for 5G base station energy consumption estimation based on a real-world dataset. Unlike existing methods, our approach integrates ...

[Request Quote](#)



[Power Consumption Modeling of 5G Multi-Carrier Base ...](#)

Importantly, this study item indicates that new 5G power consumption models are needed to accurately develop and optimize new energy saving solutions, while also considering the ...

[Request Quote](#)

Final draft of deliverable D.WG3-02-Smart Energy Saving of ...

Smart Energy Saving of 5G Base Station: Based on AI and other emerging technologies to forecast and optimize the management of 5G wireless network energy consumption



[Request Quote](#)



[Comparison of Power Consumption Models for 5G Cellular ...](#)

A new power model structure is proposed in order to assess the power consumption of traditional base stations, their extensions, and alternative architectures such as large-scale ...

[Request Quote](#)



[Power consumption based on 5G communication](#)

This paper proposes a power control algorithm based on energy efficiency, which combines cell breathing technology and base station sleep technology to reduce base station energy ...

[Request Quote](#)



[Energy Consumption Assessment of Mobile Cellular Networks](#)

Developing models that can quantify the power consumption of a base station site is an ongoing research area. A review of various kinds of power consumption models that can be applied to ...

[Request Quote](#)



[End-to-End Power Models for 5G Radio](#)



[Access Network](#)

The objective of this paper is to formulate end-to-end power consumption models for three different 5G radio access network (RAN) deployment architectures, namely the 5G ...

[Request Quote](#)



[End-to-End Power Models for 5G Radio Access ...](#)

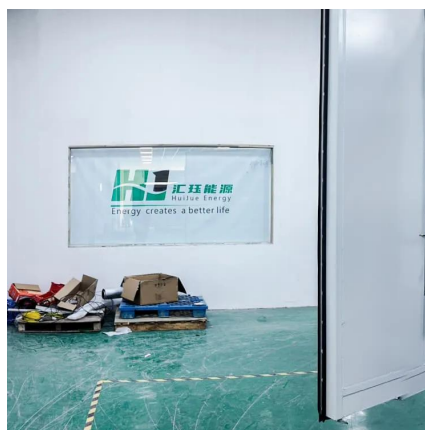
The objective of this paper is to formulate end-to-end ...

[Request Quote](#)

[Energy Consumption Modelling for 5G Radio Base Stations ...](#)

To further develop energy modelling methodology and attempt to answer the questions presented in the previous section, different machine learning algorithm's ability to predict energy ...

[Request Quote](#)



Comparison of Power Consumption Models for 5G Cellular Network Base

A new power model structure is proposed in order to assess the power consumption of traditional base stations, their extensions, and alternative architectures such as large-scale ...

[Request Quote](#)

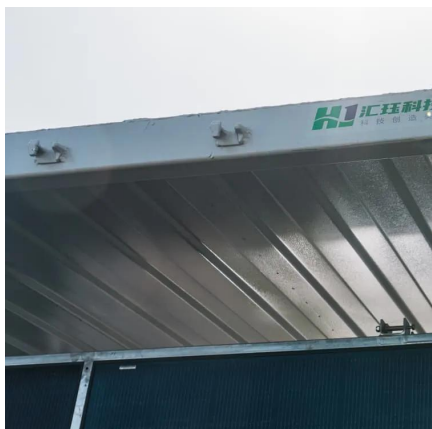
Power consumption analysis of



access network in 5G mobile ...

The network power efficiency with the consideration of propagation environment and network constraints is investigated to identify the energy-efficient architecture for the 5G ...

[Request Quote](#)



Comparison of Power Consumption Models for 5G Cellular Network Base

The first step when modeling the energy consumption of wireless communication systems is to derive models of the power consumption for the main system components, which ...

[Request Quote](#)



Contact Us

For catalog requests, pricing, or partnerships, please visit:

<https://www.energyinnovationday.pl>

Phone: +48 22 335 1273

Email: info@energyinnovationday.pl

Scan the QR code to contact us via WhatsApp.

