



How to adjust the wind power generation of base station power supply





Overview

You can control a turbine by controlling the generator speed, blade angle adjustment, and rotation of the entire wind turbine. Blade angle adjustment and turbine rotation are also known as pitch and yaw control, respectively.

You can control a turbine by controlling the generator speed, blade angle adjustment, and rotation of the entire wind turbine. Blade angle adjustment and turbine rotation are also known as pitch and yaw control, respectively.

Under the “dual carbon” goals, enhancing the energy supply for communication base stations is crucial for energy conservation and emission reduction. An individual base station with wind/photovoltaic (PV)/storage system exhibits limited scalability, resulting in poor economy and reliability. To

ployed in large groups or rows to optimize exposure to prevailing winds. They may also be installed as a single tur ariable resource with changing speeds, power production levels can vary. The energy output of a facility can be measured over ti e, however, and expected yearly electricity production.

How does wind power affect base load?

Wind power has no effect on base load. However, since base load providers can not be ramped down, if wind turbines produce power when there is no or little peak load, the extra electricity has to be dumped (e.g., into the ground) or the wind turbines turned off.

Wind power plants (WPP) are typically large generation facilities connected to the transmission system, although many smaller WPPs are connected to distribution networks. NERC Reliability Standards require that power flow and dynamics models be provided, in accordance with regional requirements and.

Balancing is done by adjusting output levels of some of the power plants, by charging and discharging storage, or by adjusting demand via market signals to increase or decrease electricity usage. Just like the other options, wind and solar power plants can also be used to provide balancing. How are.

wind energy being at the forefront. Wind energy refers to the technology that



converts the air's motion into mechanical energy, 's motion into mechanical energy. The wind is caused by differences in atmospheric pressure. Wind speeds vary based on geography, topography, and season. As a result.



How to adjust the wind power generation of base station power supply



Optimal sizing of photovoltaic-wind-diesel-battery power supply ...

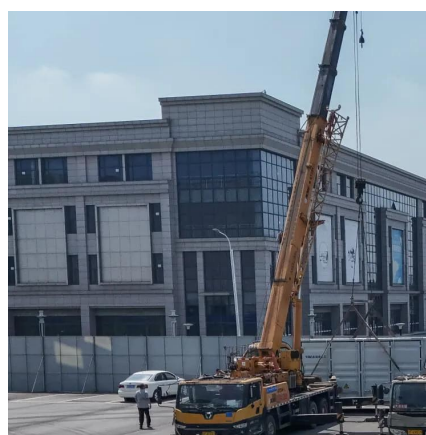
Having all the above facts in mind, the main idea of this paper is therefore to theoretically describe and software implement a novel planning tool for optimal sizing of ...

[Request Quote](#)

[Research on Capacity Optimization Configuration of Wind/PV](#)

Under the "dual carbon" goals, enhancing the energy supply for communication base stations is crucial for energy conservation and emission reduction. An individual base station with ...

[Request Quote](#)



[WECC WPP Power Flow Modeling Guidelines](#)

Most commercial Type 1 WTGs use multiple stages of switched capacitor banks at the turbine terminals to correct the steady-state power factor at the WTG terminals to unity, over the ...

[Request Quote](#)

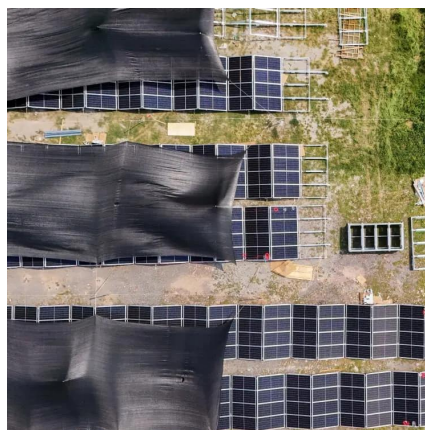


Control System of 3KW Wind Power Independent Power Supply for 3G Base

This paper studies control system operation and control strategy of 3 KW wind power generation for 3G base station. The system merges into 3G base stations to save ...



[Request Quote](#)



Wind Turbine Control Methods

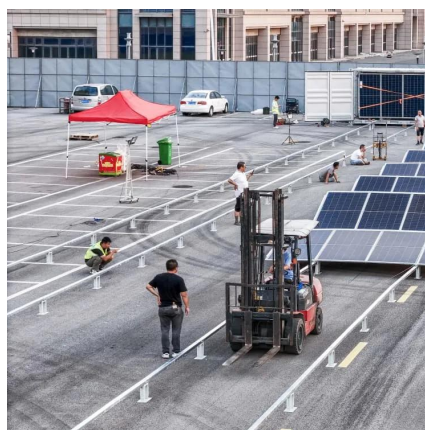
This document explores the fundamental concepts and control methods/techniques for wind turbine control systems.

[Request Quote](#)

BALANCING POWER SYSTEMS WITH LARGE SHARES ...

Traditionally, reserves are provided by those conventional power plants which are able to adjust their output level quickly in response to balancing needs (Figure 1). Recently, balancing has ...

[Request Quote](#)



Power instability base station wind power supply

Wind energy, being a non-controllable energy source, can cause problems with voltage stability and transient stability in the power system. On the other hand, the increasing use of power ...

[Request Quote](#)

Wind Energy Design and



Fundamentals

Rotors of this type must be carefully oriented (the orientation is referred to as the rotor pitch), to maintain their ability to harness the power of the wind as wind speed changes.

[Request Quote](#)



[New York Wind Energy Guide for Local Decision Makers: ...](#)

This Wind Energy Guide is meant to provide the reader with an introductory understanding of wind energy technologies and the considerations that affect wind power siting, permitting, and ...

[Request Quote](#)

[National Wind Watch , The Grid and Industrial Wind Power](#)

The preferred source that wind power may replace on the grid is hydro power, which is already carbon dioxide free. If a conventional source is replaced, it may simply be ramped down or ...

[Request Quote](#)





Contact Us

For catalog requests, pricing, or partnerships, please visit:

<https://www.energyinnovationday.pl>

Phone: +48 22 335 1273

Email: info@energyinnovationday.pl

Scan the QR code to contact us via WhatsApp.

